



New AviationWeather.gov

FPAW
October 2014

Pat Murphy
NWS Aviation Weather Center

New AviationWeather.gov

AVIATION WEATHER CENTER

NOAA NATIONAL WEATHER SERVICE

Local Forecast

Go

HOME ADVISORIES FORECASTS OBSERVATIONS TOOLS NEWS SEARCH ABOUT USER

Aviation Weather Overview

INFO

METARs

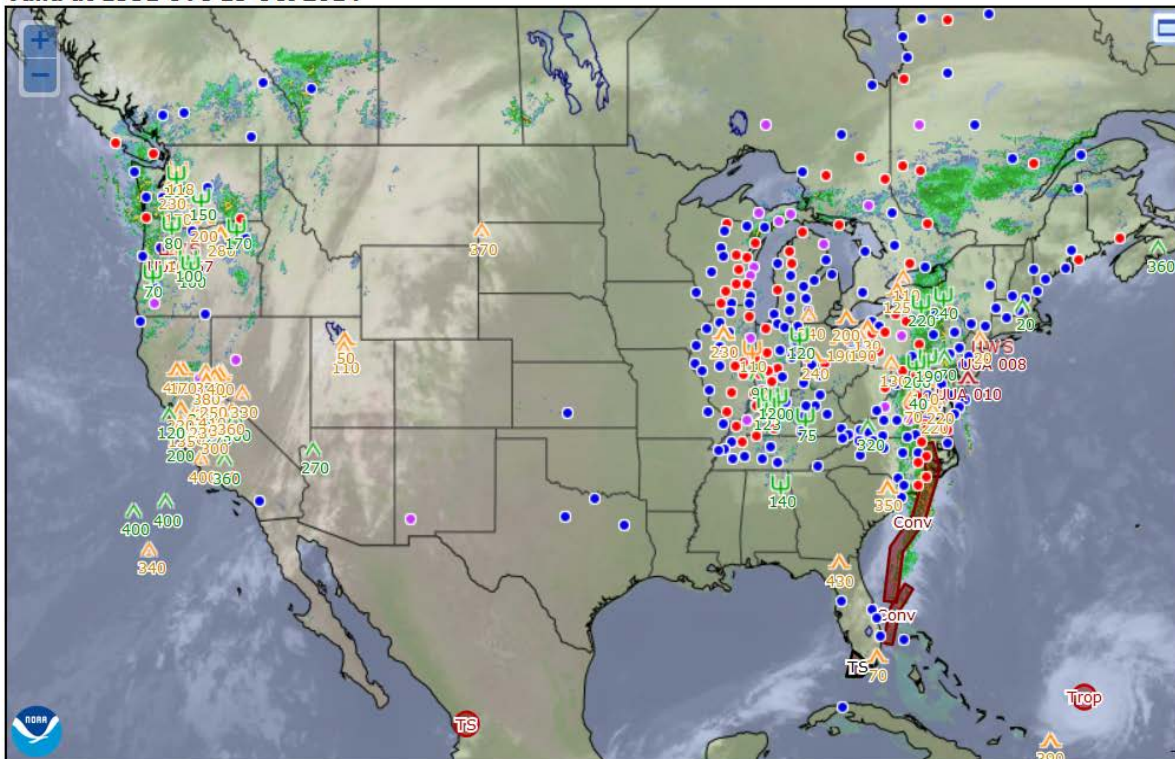
TAFs

AIR/PIREPs

SIGMETs

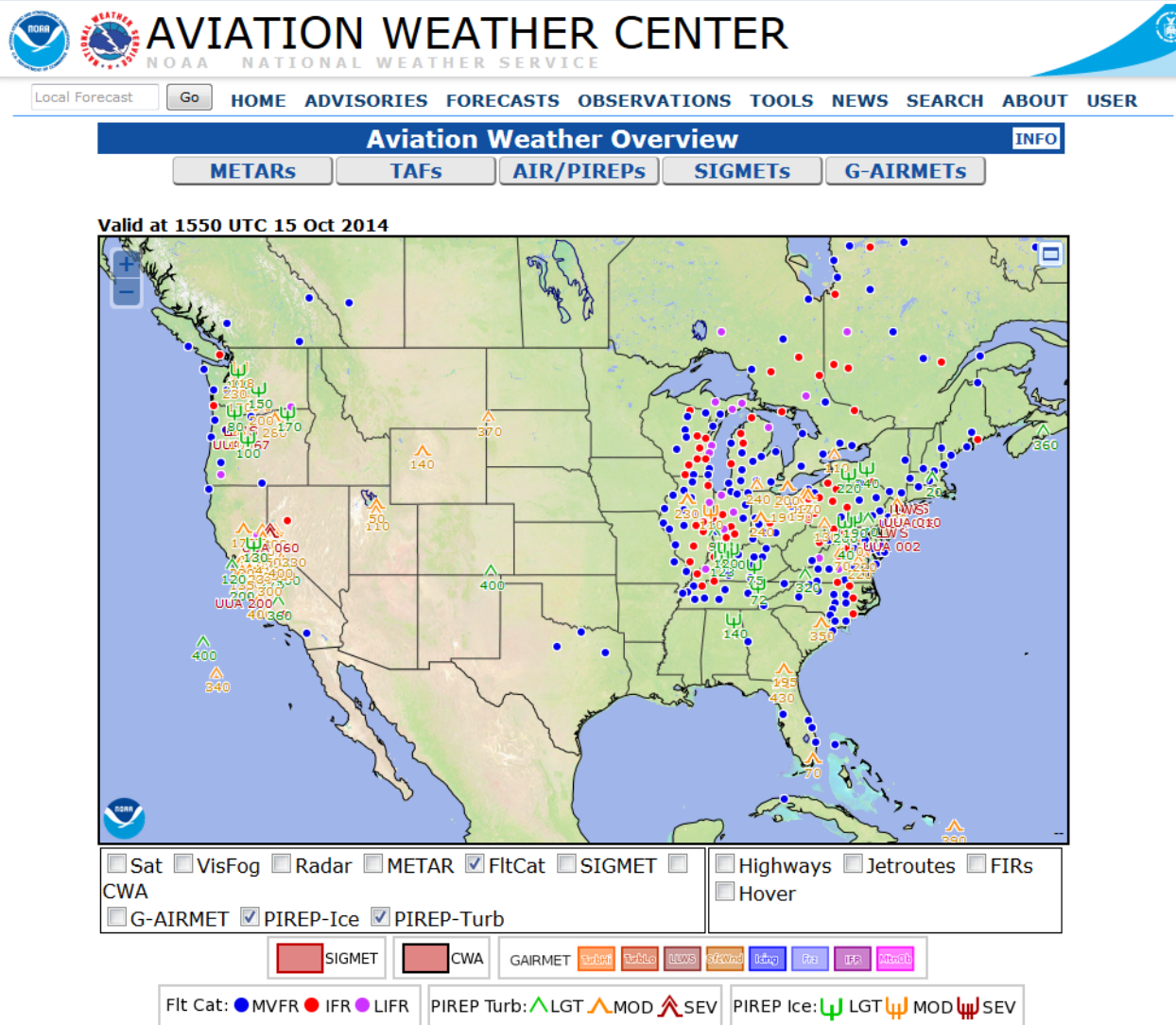
G-AIRMETs

Valid at 1531 UTC 15 Oct 2014



☒ Sat ☐ VisFog ☒ Radar ☐ METAR ☒ FltCat ☒ SIGMET ☐ Highways ☐ Jetroutes ☐ PIRs

New AviationWeather.gov



Header

Navigation

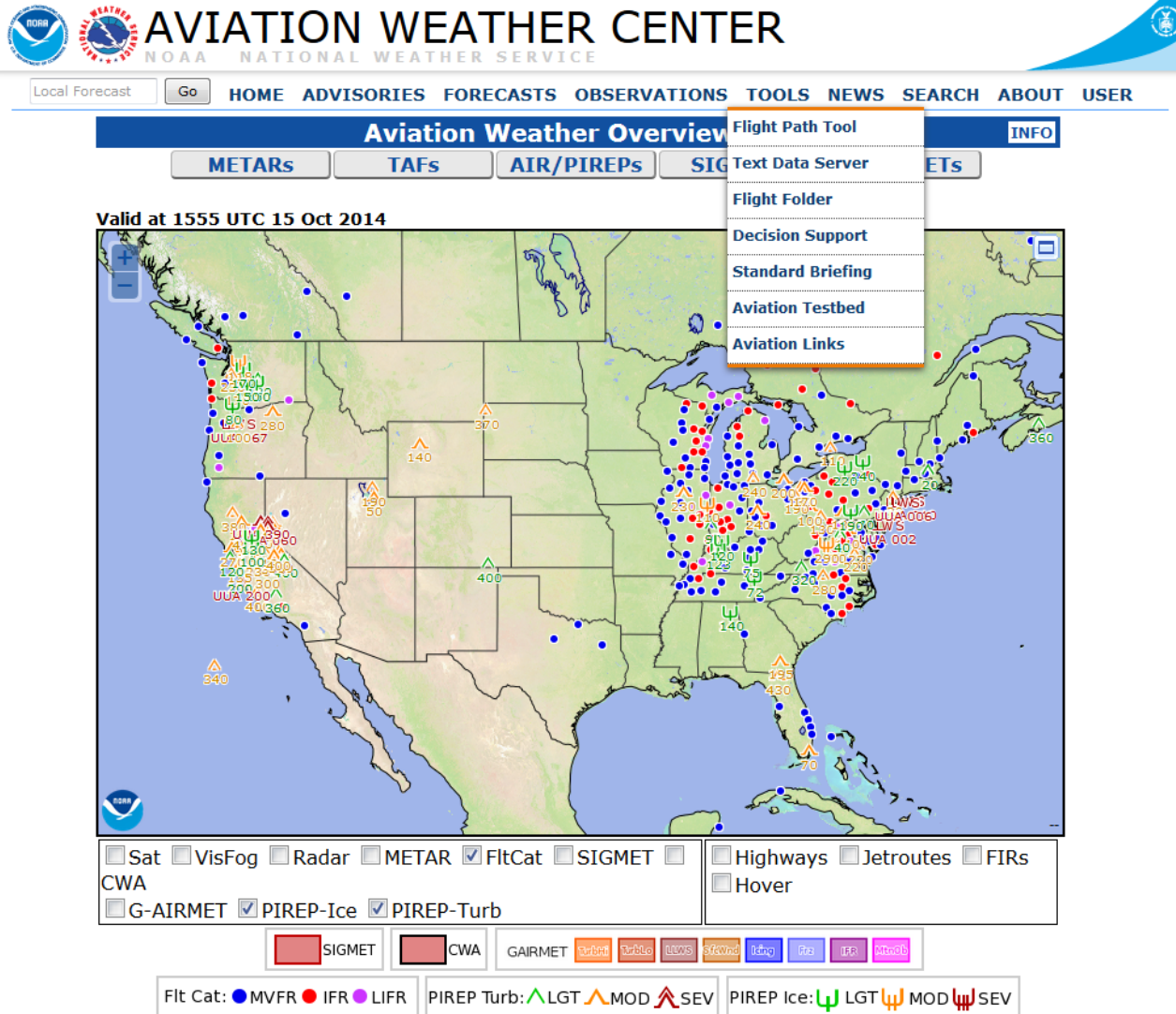
Favorites

Full Screen

Open layer GIS

Customizable personal
settings retained

New AviationWeather.gov



New AviationWeather.gov

User Settings and Preferences

Interactive Maps: ▼

Turns off interactive maps on main pages and adds a link to the interactive maps on a secondary page. Turning off maps is recommended for slow browsers and network connections.

Favorites:

Adding favorites will create a "favorites bar" that will display at the top of every page. You can create up to seven favorites. The Label is what displays in the bar. Keep this to 10 characters or less. The URL is what the link goes to. You can specify your own URL or use the presets in the drop down menu (Custom by default). These are currently saved in a cookie so you'll have to set these up on every browser. In the near future these will be set from a user preference (user login required) so that you'll have them on every browser you use.

| | | |
|----------------|---------------------|----------|
| Label: METAR | URL: /metar | Custom ▼ |
| Label: TAF | URL: /taf | Custom ▼ |
| Label: AirRep | URL: /airep | Custom ▼ |
| Label: SIGMET | URL: /sigmet | Custom ▼ |
| Label: GAIRMET | URL: /gairmet | Custom ▼ |
| Label: SAT | URL: /satellite | Custom ▼ |
| Label: ProgSfc | URL: /progchart/sfc | Custom ▼ |

User Settings



AVIATION WEATHER CENTER

NOAA NATIONAL WEATHER SERVICE



[HOME](#)
[ADVISORIES](#)
[FORECASTS](#)
[OBSERVATIONS](#)
[TOOLS](#)
[NEWS](#)
[SEARCH](#)
[ABOUT](#)
[USER](#)

Aviation Weather Overview

INFO

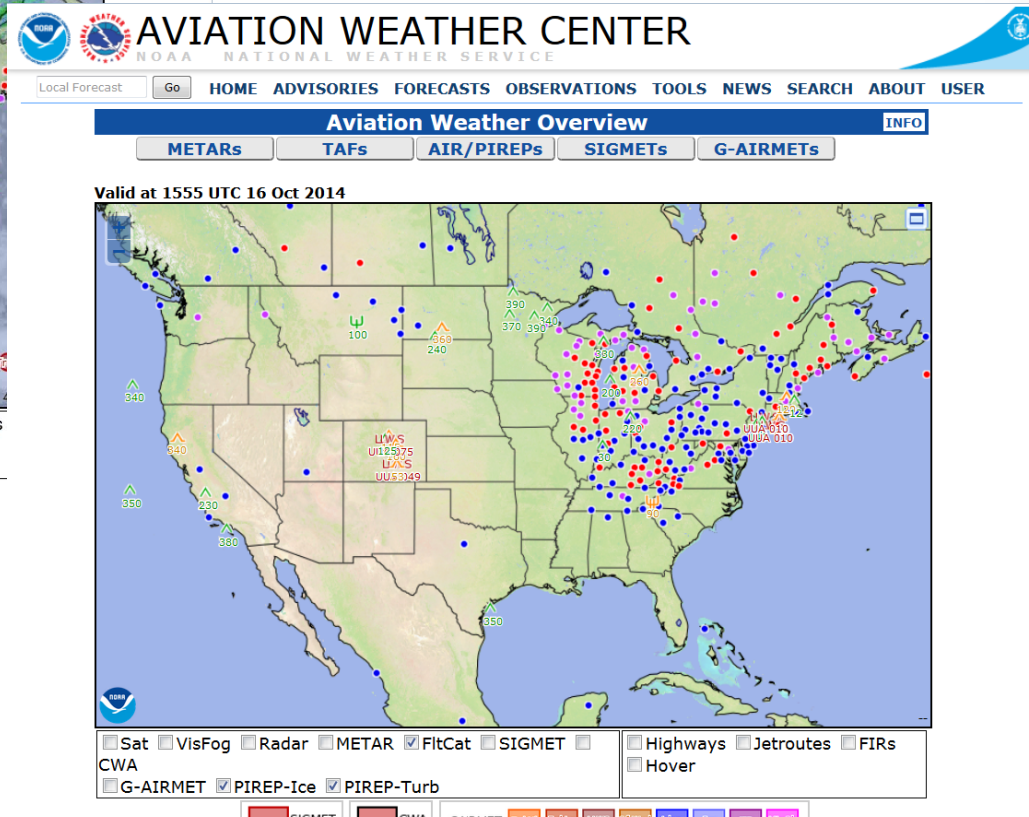
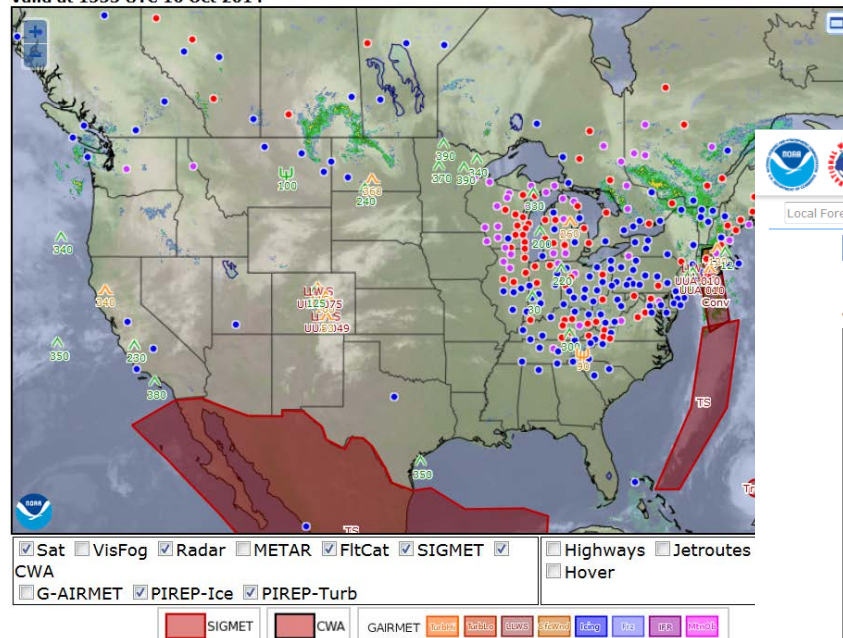
METARS

TAFs

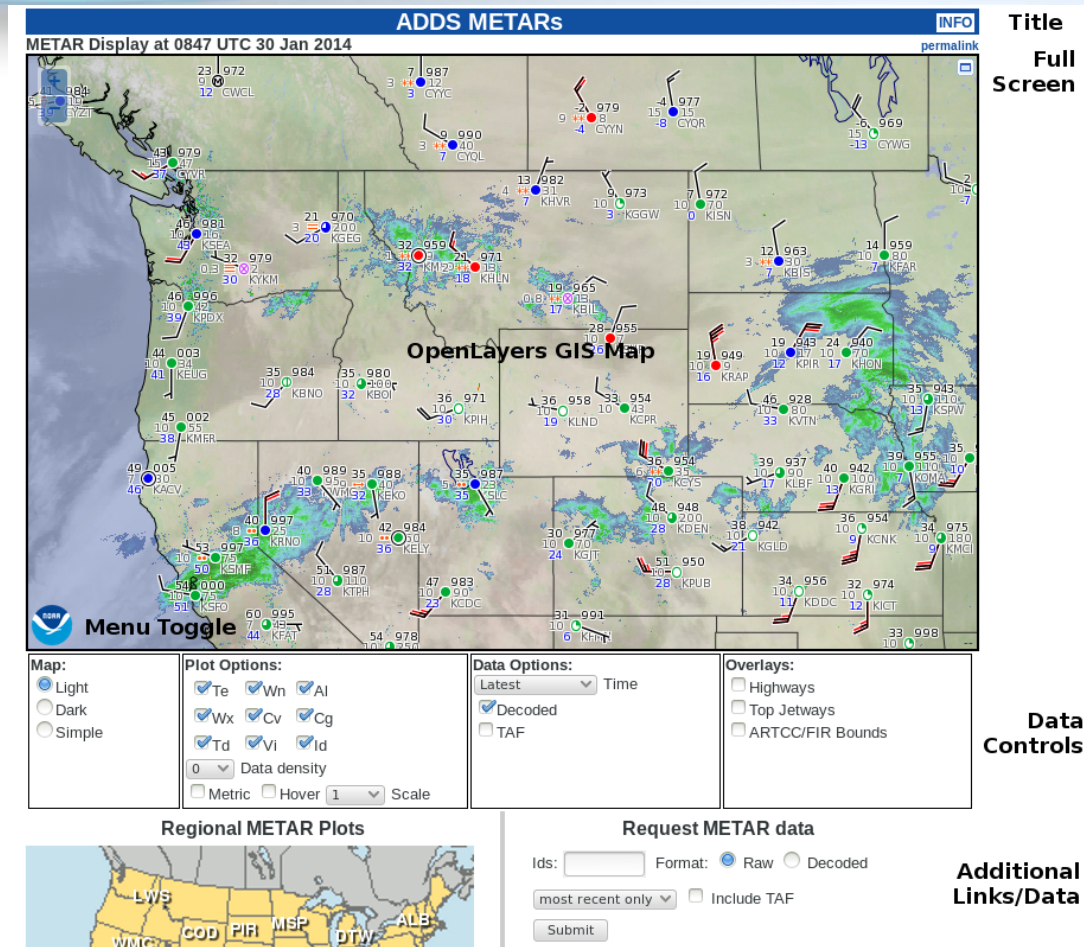
AIR/PIREPs

SIGMETs

G-AIRMETs



New AviationWeather.gov



OpenLayers GIS Page layout



New AviationWeather.gov

OpenLayers GIS Page layout

Components:

Data type and valid time label

GIS Map

Zoom Controls

Full Screen Toggle

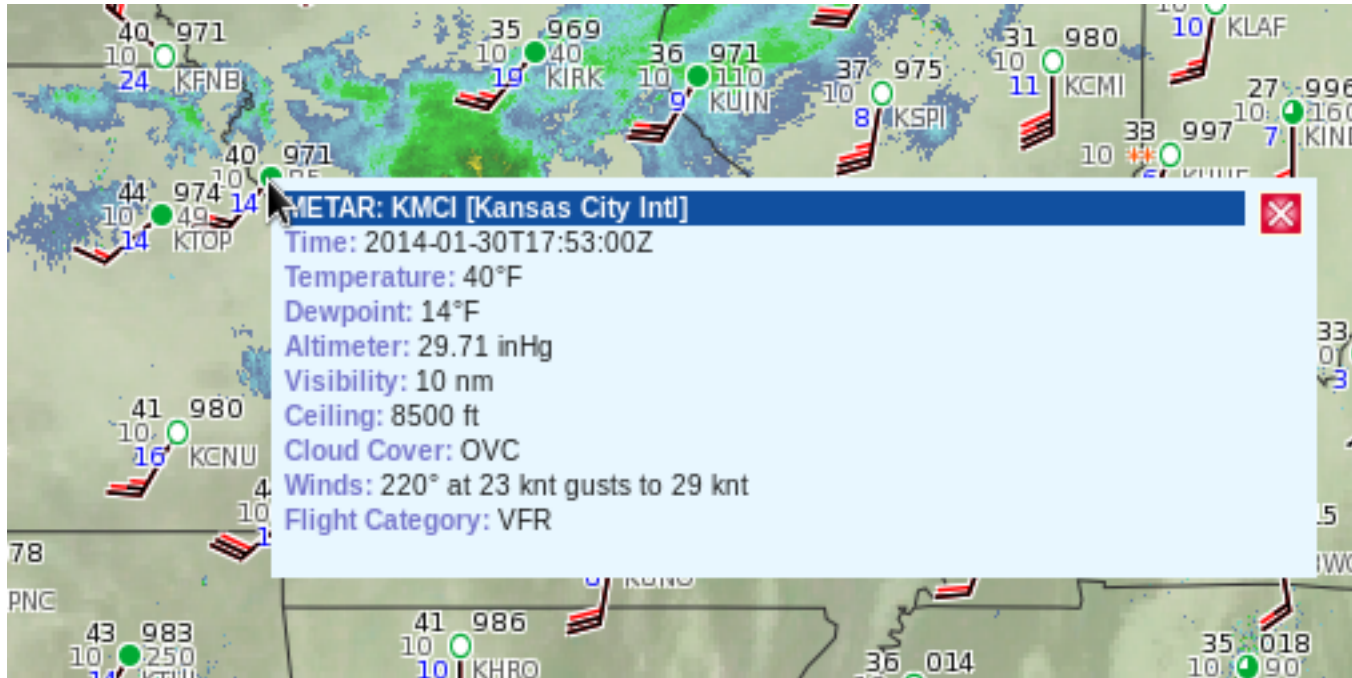
NOAA/Logo/Menu Toggle

Location Display

OpenLayers:

- Makes it easy to put a dynamic map in any web page. It can display map tiles and markers loaded from any source, with no server-side dependencies.
- Is Free Software, developed for and by the Open Source software community.
- Implements industry-standard methods for geographic data access as a framework,
- Intended to separate map tools from map data so that all the tools can operate on all the data sources.

New AviationWeather.gov



OpenLayers Data Pop-up

New AviationWeather.gov

ADD5 METAR Data

[INFO](#)

Title
Links

[METAR Home](#)[Plot](#)[Data](#)[Board](#)

Data Controls

Format: ☒ Raw ☐ Decoded

most recent only ▼

☐ Include TAF

KATL 300852Z 00000KT 10SM CLR M08/M17 A3028 RMK A02 SLP270 T10831172 58008

KBOS 300854Z 23009KT 10SM CLR M08/M19 A3033 RMK A02 SLP269 T10831194 53029

KBWI 300854Z 00000KT 10SM CLR M14/M18 A3041 RMK A02 SLP301 T11391183 50008

KCLE 300851Z 19012KT 10SM CLR M11/M19 A3024 RMK A02 SLP256 T11111189 56008 \$

KCLT 300852Z 35003KT 10SM CLR M11/M14 A3035 RMK A02 SLP287 T11061144 50001

KCVG 300852Z 17007KT 10SM CLR M13/M18 A3024 RMK A02 SLP254 T11331183 58005

Raw Data

Raw Text Page layout

Web Site Tips and Tricks

➔ GIS Map Options

➔ [?radar=on&sat=on](#)

➔ [?layout=off](#)

➔ [?fullscreen=on](#)

➔ [?lat=38.72414&lon=-96.72698](#)

➔ [?date=201409162100](#)

➔ [More at http://www.aviationweather.gov/index/help?](http://www.aviationweather.gov/index/help?)

➔ TAF Board Map Options

➔ [?ids=KJFK @zny @tope @topc @topv](#)

➔ [?bg=dark](#)

Hold down
SHIFT and
drag to
draw a
zoom box

[Login](#) to have
your settings on
every computer
you use

Get Tabs for 7
of your
Favorites
pages in
[Settings](#)

Click the
INFO
button on
each page



New AviationWeather.gov

**HEMS
Tool**

**Gate
Forecasts**

**TAF
Board**

**Tips and
Tricks**

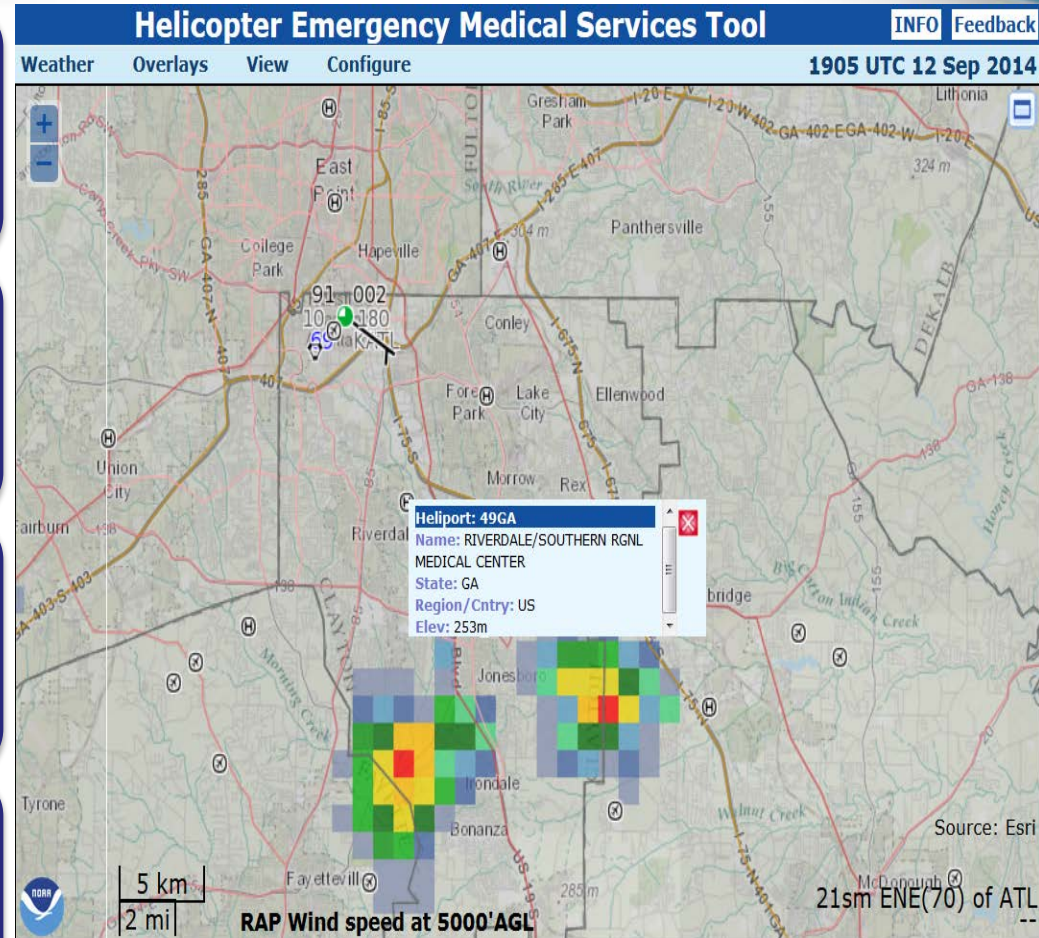
HEMS Tool

<http://new.aviationweather.gov/hemst>

Operational this winter

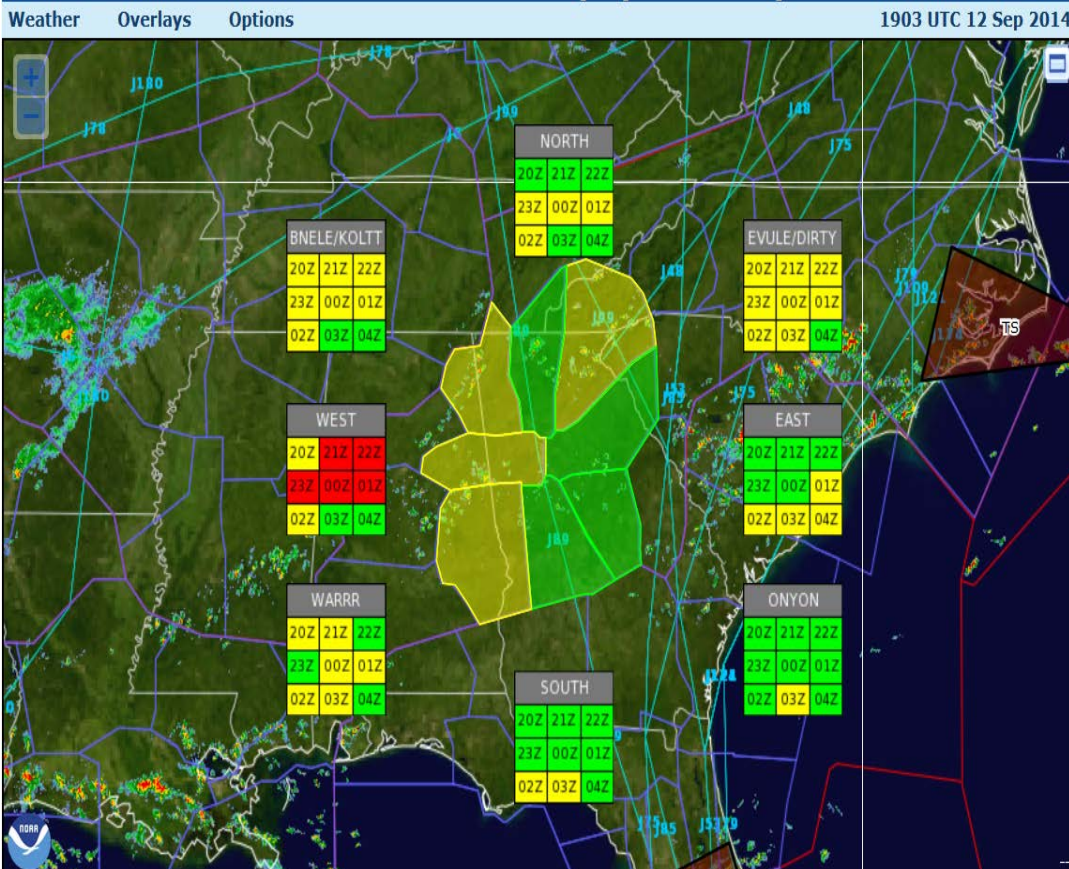
**Responds directly to the
Helicopter Emergency
Medical Services
Community**

**Easily adaptable for other
uses**



Gate Forecasts

KATL Gate Forecast (Experimental)



<http://new.aviationweather.gov/trafficflowmgmt/gate>

Being developed in collaboration with CWSUs

Gate forecasts will be editable by the CWSU

Currently uses an algorithm based on the HRRR

TAF Board

<http://new.aviationweather.gov/trafficflowmgmt/tda>

New thresholds based on CAC recently added

Potential Impact wording made consistent with other NWS products

Work needed to align thresholds with Impact Catalogues

ADDs TAF Board (Experimental)

INFO

TAF Home

Plot

Data

Board

IDs: @tope

CIG/VIS Threshold: CAC

Format:

Expanded

Condensed

Submit

Updated at: 1917 UTC 12 Sep 2014

Potential Impact

None

Marginal

Slight

Moderate

High

| Time | OBS | 12/20Z | 12/21Z | 12/22Z | 12/23Z | 13/00Z | 13/01Z | 13/02Z | 13/03Z | 13/04Z | 13/05Z | 13/06Z | 13/07Z | 13/08Z |
|-------|------|--------|--------|--------|--------|--------|--------|--------|--------|--------|--------|--------|--------|--------|
| @TOPE | | | | | | | | | | | | | | |
| KBOS | | | | | | | | | | | | | | |
| KJFK | | WSpd | WSpd | WSpd | WSpd | WSpd | WSpd | WSpd | WSpd | WSpd | WSpd | WSpd | WSpd | WSpd |
| KLGA | | | | | | | | | | | | | WSpd | WSpd |
| KEWR | | | | | | | | | | | | | | |
| KPHL | | | | | | | | | | | | | | |
| KBWI | | | | | | | | | | | | | | |
| KDCA | | | | | | | | | | | | | | |
| KIAD | | | | | | | | | | | | | | |
| KFLL | WSpd | WX | WX | WX | WX | WX | WX | | | | | | | |
| KPIT | CIG | CIG | CIG | CIG | CIG | CIG | CIG | | | | | | | |
| KMIA | WSpd | WX | WX | WX | WX | WX | | | | | | | | |
| KCLT | | | | | | | WX | WX | WX | WX | WX | WX | CIG | CIG |
| KMCO | WSpd | WSpd | WSpd | WSpd | WSpd | | | | | | | | | |
| KCLE | CIG | CIG | | | | | | | | | | | | |
| KTPA | WSpd | WX | WX | WX | WX | | | | | | | | | |
| KATL | | | | | | | | | | | | | | |