



POWERED BY LOCKHEED MARTIN

www.1800wxbrief.com

Better Briefings, Safer Flights

October 23, 2014



Dr. Weener, FPAW Keynote Address July 22

- Part 91 Fatal Accidents 2008-2012
 - (1) Loss of Control In Flight (“frequently preceded by a weather event”)
 - (5) VFR Encounter with IMC
- NTSB Most Wanted List
 - (1) General Aviation: Identify and [Effectively](#) Communicate Hazardous Weather
- Areas of Concern
 - (1) The Overall ATC/Pilot/Met Culture
 - (4) PIREPs
- Importance of improving the PIREP “system” in the NAS
 - Pilots – increase volume of PIREPs and ensure reporting is accurate and detailed
 - FAA – major changes to the way PIREPs are handled, ensuring more timely and accurate weather related information is received by the pilot



Traditional Online Briefings

Voluminous

Archaic Presentation

Difficult to Assimilate

Pilots Still Call Specialists

Regulatory Compliance \neq Safety

Common SOP: Check the Box – Print 50 Pages and Throw in Flight Bag,
“Brief” some other way

NextGen Briefings

- Make briefings valuable
- Easier/faster to read and understand
- Using graphics, automatic summarization, smart plain text translation, filtering, automatic time analysis...
- Make self-service environment viable for larger number of pilots

Typical METAR Data



METAR KAOO 082353Z AUTO 22017G27KT 10SM OVC085 14/09 A2993 RMK AO2
PK WND 23031/2337 RAE43 SLP135 P0001 60013 T01440089 10167 20128
58025

METAR KJST 082354Z AUTO 21016G25KT 6SM -RA BR FEW008 OVC012 11/09
A2992 RMK AO2 PK WND 22029/2337 SLP134 P0001 60027 T01060094
10122 20106 56021

SPECI KJST 090014Z AUTO 22016G26KT 6SM -RA BR BKN008 OVC013 10/09
A2991 RMK AO2 PK WND 21026/0005 CIG 006V009 P0000
no reports available for HMZ

METAR KCBE 082355Z AUTO 16004KT 10SM SCT065 SCT100 16/10 A3000
RMK AO1

METAR KCBE 090016Z AUTO 17004KT 10SM SCT090 16/10 A3000 RMK AO1

METAR K2G4 082355Z AUTO 21014G19KT 10SM BKN019 OVC024 10/08 A2999
RMK AO1

METAR K2G4 090015Z AUTO 21016G26KT 10SM BKN019 OVC024 10/08 A2998
RMK AO1

METAR KW99 082355Z AUTO 21008KT 10SM BKN080 BKN090 18/08 A3001 RMK
AO2 T01840082 10227 20175

METAR KW99 090015Z AUTO 19006G17KT 10SM BKN080 BKN090 19/08 A3001
RMK AO2 T01850082

METAR KW99 090035Z AUTO 20008G17KT 10SM BKN080 OVC100 18/08 A3000
RMK AO2 T01820082

METAR KEKN 082351Z AUTO 16006KT 10SM BKN060 OVC090 13/09 A3004 RMK
AO2 RAE43 SLP176 P0000 60002 T01280089 10194 20122 58013 TSNO

METAR KW22 082355Z AUTO 20012G19KT 10SM FEW055 13/10 A3002 RMK AO2

METAR KW22 090015Z AUTO 21012G23KT 10SM -RA FEW032 SCT042 BKN048
13/09 A3002 RMK AO2

METAR KW22 090035Z AUTO 22013G21KT 5SM HZ BKN033 OVC041 13/10
A3003 RMK AO2

NGB METARs – Overview Page

Route brief for VFR TTT123 C130/C PIT 072000 045 ACY 0600 ALT1: MJX 50nm

Adverse Cond Synopsis **Current Wx** Forecasts NOTAMs Flow Control (0) Misc All

METAR PIREP

STANDARD NEXTGEN

Previous 1 of 6 Next

Automation Summarization - METARs

Use the Next Button to step through different sections of the METAR reports

Departure:

▶ VFR KPIT 071851Z 27011G22KT 10SM BKN036 OVC050 15/06 A2991
RMK AO2 SLP132 BINOVCT01500061

Route:

▶ UNKN KBVI METAR not available

▶ VFR KAFJ 071915Z 26011G19KT 10SM FEW037 BKN060 14/05 A2996
RMK AO1

▶ VFR KBTP 071915Z AUTO 24012G23KT 10SM SCT033 BKN041 OVC050
13/05 A2994 RMK AO1

▶ VFR KAGC 071853Z 26013G21KT 10SM SCT040 BKN055 14/06 A2991
RMK AO2 SLP129 T01390056

▶ VFR KLBE 071847Z 25013G17KT 10SM SCT041 BKN050 14/06 A2992

▶ UNKN KIDI 071915Z AUTO 29011G18KT 10SM 13/07 A2992 RMK AO2

▶ VFR KJST 071854Z AUTO 26013G26KT 10SM BKN039 BKN048 11/05 A2990
RMK AO2 PKWND 25026/1845 SLP122
T01060050

▶ VFR KAOO 071853Z AUTO 27015G20KT 10SM BKN034 OVC048 14/08
A2989 RMK AO2 PKWND 27026/1811 SLP115
T01440083

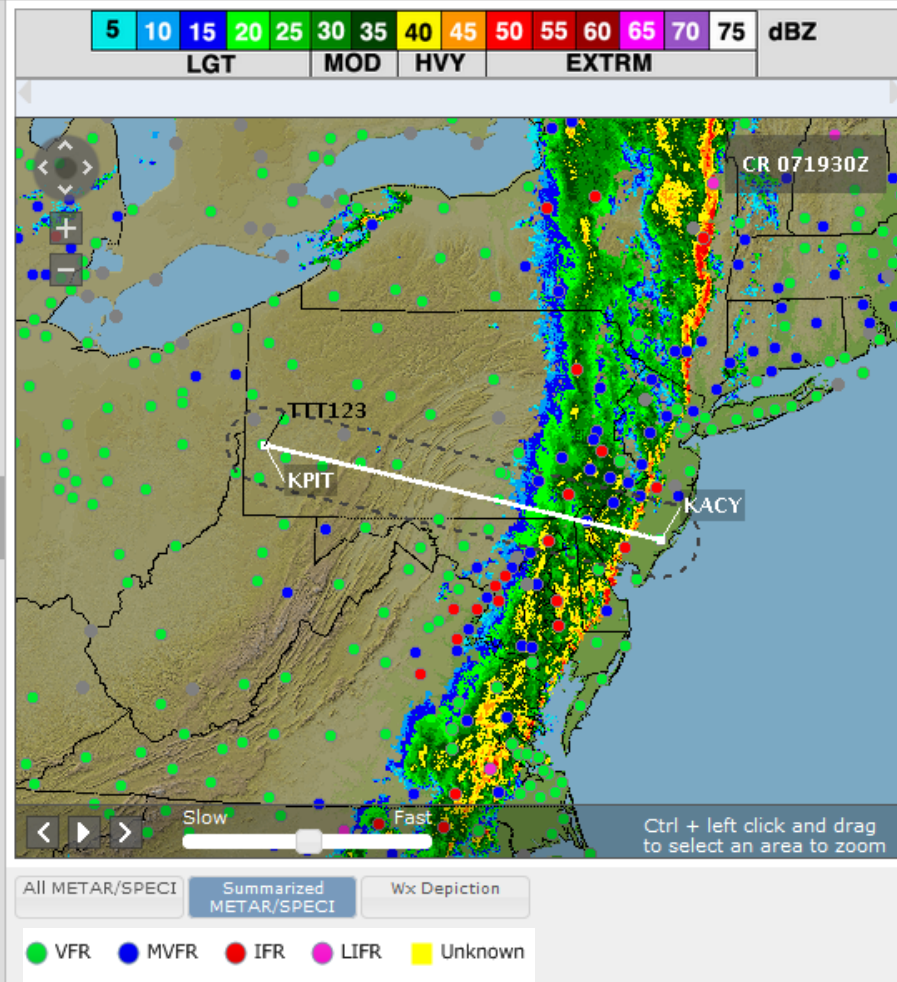
▶ VFR KHGR 071853Z 26005KT 10SM BKN060 17/13 A2988 RMK AO2
SLP123 T01670133

▶ VFR KCXY 071856Z 29005KT 10SM -RA FEW033 BKN060 OVC080
16/14 A2987 RMK AO2 RAE24B41 SLP113 P0002
T01610144

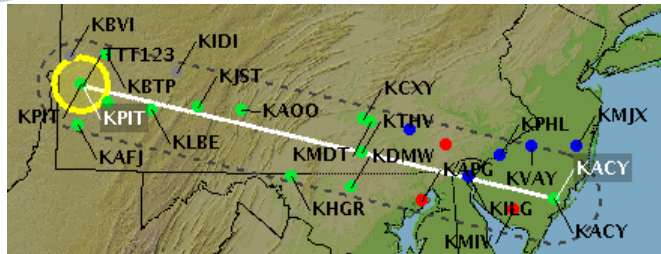
▶ VFR KDMW 071925Z AUTO 25004KT 10SM OVC043 15/13 A2990 RMK AO2

▶ VFR SP KTHV 071909Z AUTO 24003KT 10SM FEW008 SCT019 OVC060 16/14
A2987 RMK AO2 RAE00 P0000

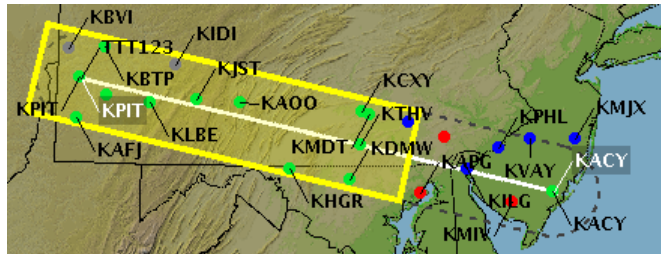
▶ VFR KMDT 071856Z 31007KT 9SM -RA FEW011 SCT032 BKN055



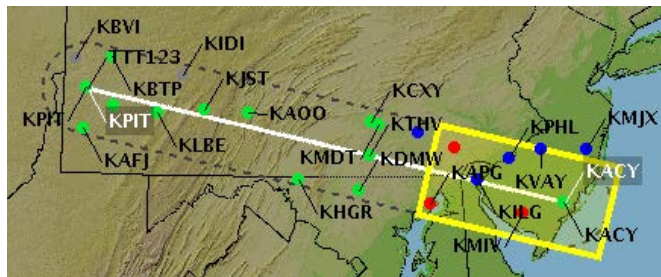
NGB METAR Summaries



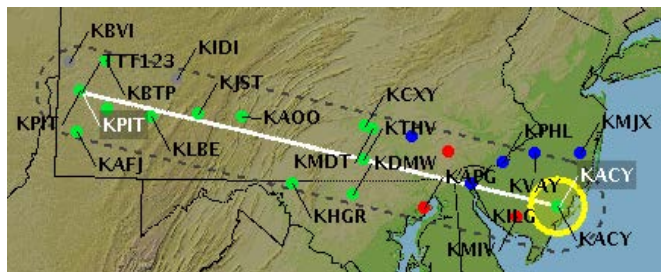
Current conditions at Pittsburgh International, Pittsburgh, PA, **VFR**, Wind at 270 11 knots with gusts to 22 knots, 10 miles visibility, Ceiling is Broken at 3600 feet, Overcast at 5000 feet, Temperature 15°C, Dewpoint 6 °C, Altimeter is 29.91



Mostly **VFR** with some **MVFR** through Lancaster, Lancaster, PA, with ceilings as low as **2000 feet**, Widely Scattered Light Rain



IFR and **MVFR** through South Jersey Rgnl, Mount Holly, NJ, with ceilings as low as **600 feet**, widespread Heavy Rain and Mist, visibility as low as **1 mile**



Current conditions at Atlantic City International, Atlantic City NJ, **VFR**, wind at 190 18 knots with gusts to 28 knots, 10 miles visibility, Few clouds at 1800 feet, Ceiling is Broken at 7000 feet, Temperature 24°C, Dewpoint 20°C, Altimeter is 29.85

Typical TAF Data



TAF AMD KAOO 090024Z 0900/0924 22017G27KT P6SM OVC090
WS020/23040KT
FM090200 27015G25KT 5SM -SHRA BR OVC015
FM090500 30010G15KT P6SM SCT025
FM091400 29015G25KT P6SM BKN035
TAF AMD KJST 090024Z 0900/0924 22016G26KT 6SM -RA BR BKN008 OVC013
FM090400 29015G25KT P6SM BKN015
FM090700 28010KT P6SM SCT025
FM091500 28015G25KT P6SM BKN025
TAF KEKN 082334Z 0900/0924 18005KT 6SM -SHRA SCT025 OVC040 TEMPO
0906/0909 VRB10G22KT 4SM -SHRA SCT015 BKN035
FM090900 32010KT 4SM -SHRA BR SCT008 OVC015
FM091400 28007KT P6SM BKN035
FM091700 28012G18KT P6SM SCT250

NGB TAF Presentation



Route brief for VFR TTT123 C130/C AGC 071820 045 ACY 0600 50nm



Adverse Cond Synopsis Current Wx **Forecasts** NOTAMS Flow Control (0) Misc All

Area Forecast **Terminal Forecast** Winds Aloft

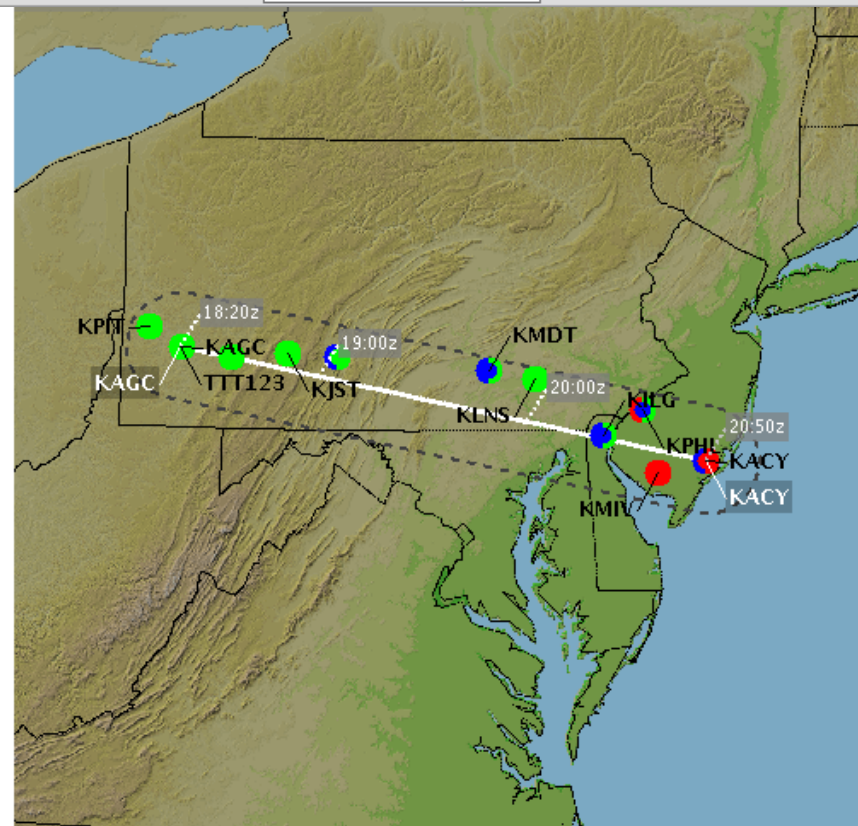
STANDARD **NEXTGEN**

Automation Summarization - TAFs

Your projected flight time and filed speed have been used to identify the most relevant TAF forecast information for your flight. These times do not include adjusted wind speed.

20:00z	VFR	FM072000 28013G22KT P6SM SCT023 BKN040
	VFR	FM080000 29010KT P6SM SCT060 =
20:20z	VFR	TAF KILG 071724Z 0718/0818 20018G28KT 6SM -SHRA SCT020 OVC050
	MVFR	TEMPO 0718/0721 3SM +SHRA BR OVC020
+40min →	VFR	FM072100 24010KT P6SM -SHRA OVC040
	VFR	FM072300 28010KT P6SM BKN060
	VFR	FM080200 32008KT P6SM SCT060
	VFR	FM080300 33005KT P6SM SKC
	VFR	FM081400 35006KT P6SM SKC =
20:30z	MVFR	TAF KPHL 071724Z 0718/0824 22015G25KT 5SM -SHRA BR BKN025 OVC040
-30min →	IFR	TEMPO 0718/0720 2SM +SHRA BR OVC010
+30min →	VFR	FM072100 24010KT P6SM -SHRA OVC040
	VFR	FM072300 28010KT P6SM BKN060
	VFR	FM080200 32008KT P6SM SCT060
	VFR	FM080300 33005KT P6SM SKC
	VFR	FM081400 35006KT P6SM SKC =
20:40z	VFR	TAF KMIV 071724Z 0718/0818 18012G20KT P6SM VCSH SCT020 OVC040
	IFR	TEMPO 0719/0722 2SM +SHRA BR OVC012
	VFR	FM072200 24010KT P6SM -SHRA OVC040
	VFR	FM080000 28010KT P6SM BKN060
	VFR	FM080200 33005KT P6SM SCT060
	VFR	FM081400 01006KT P6SM SKC =
20:50z	MVFR	TAF KACY 071724Z 0718/0818 19015G25KT P6SM VCSH BKN015 OVC030
	IFR	TEMPO 0720/0723 2SM +SHRA BR OVC012
	VFR	FM072300 24010KT P6SM -SHRA OVC040
	VFR	FM080100 29010KT P6SM BKN060
	VFR	FM080300 33006KT P6SM SCT060
	VFR	FM081400 02010KT P6SM SKC =

Terminal Area Forecasts on **Terrain & Color Map**



Animate Wx Configure Map Supplemental Wx

● VFR ● MVFR ● IFR ● LIFR ● Unknown

Color-coding based on ceiling and visibility only



Typical AIRMET Outlook Data



WAUS42 KPCI 102045

MIAS WA 102045

AIRMET SIERRA UPDT 3 FOR IFR AND MTN OBSCN VALID UNTIL 110300

.

OTLK VALID 0300-0900Z

AREA 1...IFR NC SC GA NY NJ PA OH WV MD DC DE VA AND CSTL WTRS
BOUNDED BY 40SSW SYR-20ESE CYN-30ESE SBY-40ENE ECG-20E ILM-30NNW
IRQ-40SSE MCN-50S LGC-20N ODF-20NNW HNV-20NNW HNN-20N EWC-ERI-
30SSW BUF-40SSW SYR

CIG BLW 010/VIS BLW 3SM BR. CONDS CONTG THRU 09Z.

WAUS41 KPCI 102045

BOSS WA 102045

AIRMET SIERRA UPDT 3 FOR IFR AND MTN OBSCN VALID UNTIL 110300

Adverse Conditions - AIRMET Outlook

Standard brief for VFR TTT123 C172/A KGAI 102330 95 KHFD 0300 50nm

Adverse Cond | Synopsis | Current Wx | Forecasts | NOTAMs | Flow Control | Misc | All

TFR | DD NOTAM | Conv SIG | SIGMET (0) | **AIRMET** | UUA (0) | CWA | Severe Weather (0)

IFR | MTN Obsc (0) | Icing (0) | Turb Low (0) | Turb High (0) | Wnds>30 Kts (0) | LLWS (0) | Other (0)

STANDARD | **NEXTGEN**

Previous | 1 of 2 | Next

AIRMET OUTLOOK Valid 1407110300-1407110900Z

Ceiling below 1,000 feet/visibility below 3 statute miles mist. Conditions continuing through 0900Z.

Outlook AIRMET active times: Start:Jul 10, 2045Z End:Not Defined
 Estimated passing times: **Earliest:Jul 10, 2331Z** **Latest:Jul 11, 0042Z**
 ! Outlook AIRMET is active during estimated passing time. [What's this?](#)

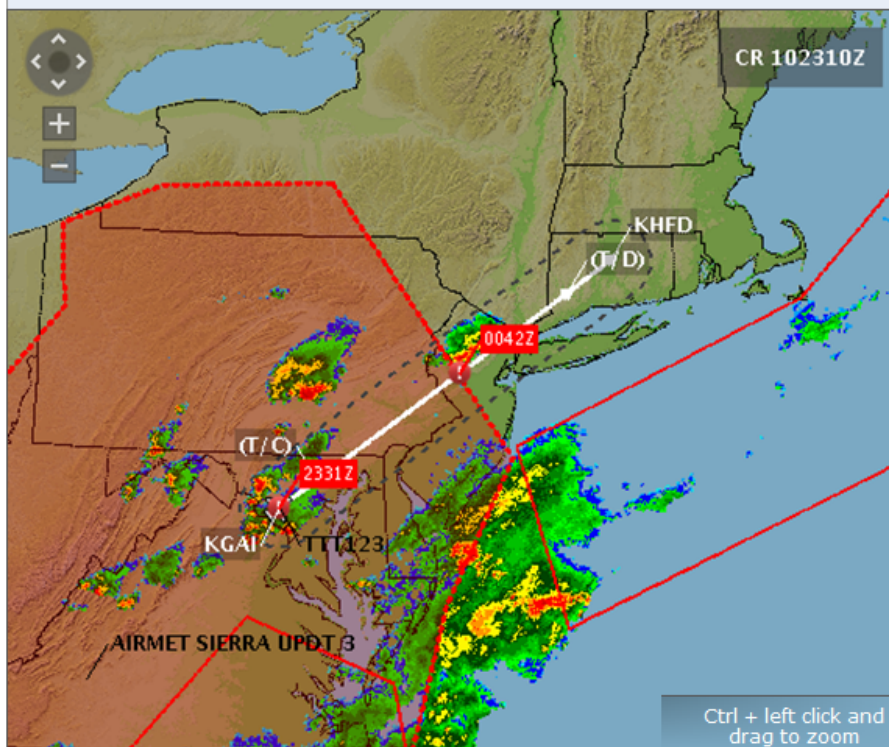
WAUS42 KCCI 102045
 MIAS WA 102045
 AIRMET SIERRA UPDT 3 FOR IFR AND MTN OBSCN VALID UNTIL 110300

OTLK VALID 0300-0900Z
 AREA 1...IFR NC SC GA NY NJ PA OH WV MD DC DE VA AND CSTL WTRS
 BOUNDED BY 40SSW SYR-20ESE CYN-30ESE SBY-40ENE ECG-20E ILM-30NNW
 IRQ-40SSE MCN-50S LGC-20N ODF-20NNW HMV-20NNW HNN-20N EWC-ERI-
 30SSW BUF-40SSW SYR
 CIG BLW 010/VIS BLW 3SM BR. CONDS CONTG THRU 09Z.

WAUS41 KCCI 102045
 BOSS WA 102045
 AIRMET SIERRA UPDT 3 FOR IFR AND MTN OBSCN VALID UNTIL 110300

OTLK VALID 0300-0900Z
 AREA 1...IFR NY NJ PA OH WV MD DC DE VA NC SC GA AND CSTL WTRS
 BOUNDED BY 40SSW SYR-20ESE CYN-30ESE SBY-40ENE ECG-20E ILM-30NNW
 IRQ-40SSE MCN-50S LGC-20N ODF-20NNW HMV-20NNW HNN-20N EWC-ERI-
 30SSW BUF-40SSW SYR
 CIG BLW 010/VIS BLW 3SM BR. CONDS CONTG THRU 09Z.

AIRMET - IFR on | Terrain & Color Map



Animate Wx

Configure Map

Supplemental Wx

— AIRMET - IFR

- - - AIRMET - IFR Outlook

Wx - 5 10 15 20 25 30 35 40 45 50 55 60 65 70 75 dBZ
 LGT MOD HVY EXTRM

Center Weather Advisory

Standard brief for VFR TTT123 C172/A KGAI 102330 95 KHFD 0300 50nm

Adverse Cond Synopsis Current Wx Forecasts NOTAMs Flow Control Misc All

TFR DD NOTAM Conv SIG SIGMET (0) AIRMET UUA (0) **CWA** Severe Weather (0)

STANDARD NEXTGEN

Previous 1 of 1 Next

CWA 103 Valid Until 110000

Area of thunderstorms with heavy precipitation moving from 270° at 10 knots. Tops at flight level 320. Thunderstorms will impact N90 west gate departures and APPRCH Teterboro, Teterboro, NJ (TEB)-Newark Liberty International, Newark, NJ (EWR) 2300Z to 0000Z. Small hail and snow pellet

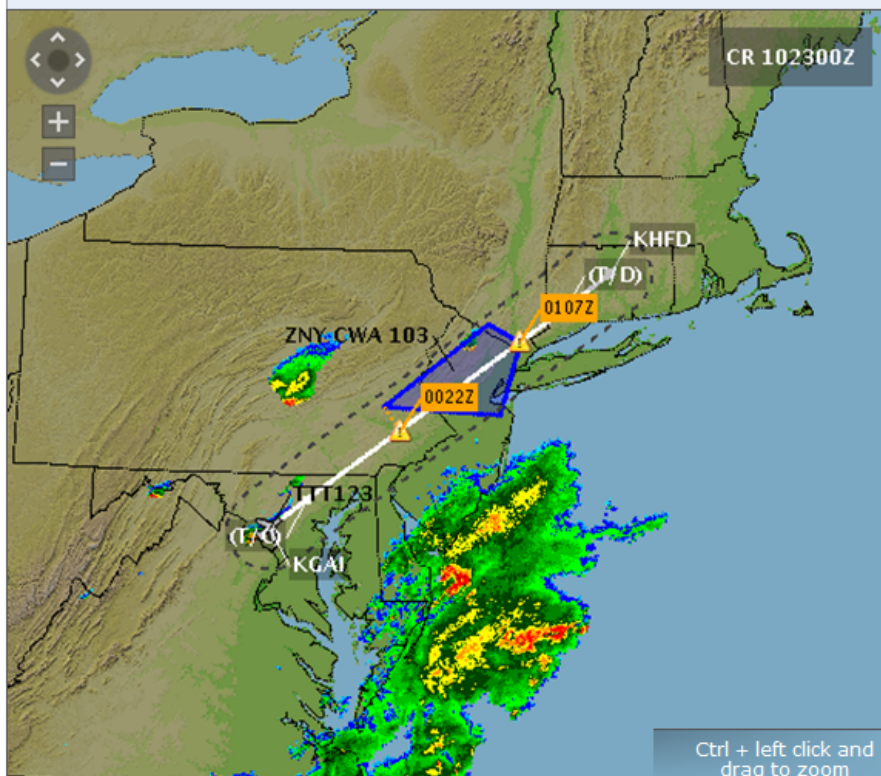
Center Advisory active times: Start:Jul 10, 2225Z End:Jul 11, 0000Z
Estimated passing times: **Earliest:Jul 11, 0022Z** **Latest:Jul 11, 0107Z**

⚠ Center Advisory is active 22 minutes prior to estimated passing time.

[What's this?](#)

ZNY1 CWA 102225
ZNY CWA 103 VALID UNTIL 110000
FROM 15NE SAX-30E SAX-25SW JFK-10S ETX-15NE SAX
AREA OF TS WITH HVY PCPN MOV FROM 27010KT. TOPS FL320. TS WL IMPACT
N90 W GATE DEPARTURES AND APPRCH TEB-EWR 2300Z-0000Z.
GS

Center Weather Advisories on Terrain & Color Map



Animate Wx Configure Map Supplemental Wx

CWA

Wx - 5 10 15 20 25 30 35 40 45 50 55 60 65 70 75 dBZ
LGT MOD HVY EXTRM

Unfiltered Navaid NOTAMs



Departure Destination **En Route** Gen FDC Intl (0) Uncategorized

NAV COM SVC OBST AIRSPACE SUA (0) RWY/TWY/APRON/AD/FDC Other/Unverified Mil

☒ VOR ☒ VOR-DME ☒ VORTAC ☒ NDB
☒ DME ☒ TACAN ☒ ILS ☒ Other

IHRJ 13/03002 KHRJ NAV HQT NDB UNMONITORED

IFAY 13/07027 KFAY NAV VOR GROUND RECEIVER CHECKPOINT **OTS**

IFAY 14/03029 KFAY NAV ILS RWY 4 GP **OUT OF SERVICE** 1403202130-1404032000EST

IMEB 09/06002 KMEB NAV RWY 5 ILS LLZ/GP UNMNT

ILBT 08/09004 KLBT NAV VOR **OTS**

ILBT 13/04005 KLBT NAV ILS RWY 5 LLZ UNMONITORED WEF 1304031734

IAND 12/08392 KCKI NAV NDB UNMONITORED

IAND 14/03339 KCKI NAV NDB **OUT OF SERVICE** 1403252346-1404252000EST

IAND 14/03307 VAN NAV TACAN AZM **OUT OF SERVICE** 1403241255-1404042000EST

IAND 13/12201 KRBW NAV ILS RWY 23 DME **UNUSABLE** BEYOND 18 DEG RIGHT OF COURSE 1312201557-1412201555EST

IBQK 13/08004 KBQK NAV JEFFI NDB/ILS RWY 7 LO DECOMMISSIONED WEF 1308091413

IBQK 14/03040 KBQK NAV ILS RWY 7 LOC/GP **OUT OF SERVICE** 1403281300-1403281800

IGNV 13/04250 K28J NAV PALATKA NDB **OTS** WEF 1304221801

IOCF 08/08019 KOCF NAV TACAN AZM 329-359 **UNUSBL**

IOCF 08/08020 KOCF NAV TACAN AZM 025-078 **UNUSBL** WEF 0808182135

IPIE 13/04159 KZPH NAV RHZ NDB **OTS** WEF 1304191621

IVDF 11/05012 KVDF NAV RWY 23 ILS LLZ/GP UNMNT 0330-0930 DLY WEF 1105230930

IVDF 14/03016 KVDF NAV ILS RWY 23 LOC **OUT OF SERVICE** 1403251050-1404302000EST

IVDF 14/03017 KVDF NAV ILS RWY 23 GP/DME **OUT OF SERVICE** 1403251057-1404302000EST

ITPA 11/02056 KTPA NAV RWY 1R ILS LLZ **UNUSBL** BYD 15 DEG L OF CRS

ITPA 11/02057 KTPA NAV RWY 19L ILS LLZ **UNUSBL** BYD 25 DEG L OF CRS

ITPA 14/02088 KTPA NAV VOT **OUT OF SERVICE** 1402211526-1406252000EST

IPIE 14/03062 KPIE NAV ILS RWY 36R UNMONITORED DAILY 0500-1200 1403090500-1404091200EST

IPIE 14/03063 KPIE NAV ILS RWY 18L UNMONITORED DAILY 0500-1200 1403090500-1404091200EST

ISRQ 12/06088 KSRQ NAV TACAN AZM **OTS** WEF 1206201606

IMIA 12/03075 KPHK NAV TACAN AZM **OTS**

IFLL 13/05027 KFLL NAV ILS RWY 10R LLZ/OM **OTS** WEF 1305021525

ITMB 13/02038 KTMB NAV ILS RWY 9R OM **OTS** WEF 1302251616



☒ VOR ☐ DME ☒ VOR-DME ☒ TACAN ☒ VORTAC ☐ ILS ☒ NDB ☒ Other

NOTAM Condition: ● Out of Service ● Unusable ● Standard

Filtered Navaid NOTAMs



Departure

Destination

En Route

Gen FDC

Intl (0)

Uncategorized

NAV

COM

SVC

OBST

AIRSPACE

SUA (0)

RWY/TWY/APRON/AD/FDC

Other/Unverified

Mil

☐ VOR

☒ VOR-DME

☒ VORTAC

☐ NDB

☒ DME

☐ TACAN

☐ ILS

☒ Other

IFAY 13/07027 KFAY NAV VOR GROUND RECEIVER CHECKPOINT **OTS**

ILBT 08/09004 KLBT NAV VOR **OTS**

ITPA 14/02088 KTPA NAV VOT **OUT OF SERVICE** 1402211526-1406252000EST

IHST 14/08001 KHST NAV HST TEST

IGPS 14/03139 KGPS NAV PSEUDO RANDOM NOISE 32 **OUT OF SERVICE** 1404010800-1404012000 (Not Depicted On Graphics)

IMZG 13/09001 KMZG NAV GROUND BASED TRANSCEIVER **OTS** WEF 1309092343 (Not Depicted On Graphics)

+

-

KTPA

KTPA

KRDU

SR1

KMIA

KHST

☒ VOR

☐ DME

☒ VOR-DME

☐ TACAN

☒ VORTAC

☐ ILS

☐ NDB

☒ Other

NOTAM Condition: ● Out of Service ● Unusable ● Standard

Departure Advisor



Departure Time Options	Each row indicates weather conditions forecasted to be present along the route of flight based on the departure time, airspeed, and winds. This is not a substitute for a full briefing.										
	KPIT	KAGC	KUST	KMDT		KMIN	KLNS	KILG		KPHL	KACY
0900Z	V	V	M	M		I	L	I		M	M
1000Z	V	V	M	M		I	L	I		I	M
1100Z	V	V	M	M		I	L	I		I	M
1200Z	V	V	V	M		M	L	I		I	M
1300Z	V	V	V	M		M	L	I		I	I
1400Z	V	V	V	V		M	M	I		I	I
1500Z	V	V	V	V		M	M	M		I	I
1600Z	V	V	V	V		V	M	M		M	I
1700Z	V	V	V	V		V	V	M		M	M
1800Z	V	V	V	V		V	V	V		V	M
1900Z	V	V	V	V		V	V	V		V	V

V M I L VFR, MVFR, IFR & LIFR TAF conditions

Adverse Wx (AIRMETs, SIGMETs, Convective SIGMETs)

Flight Service Data Link

- Bi-directional electronic communications with cockpit
- Provides infrastructure for a wide range of applications
- Pathway to handle routine flight service communications with automation



Spidertracks



Honeywell



DeLorme

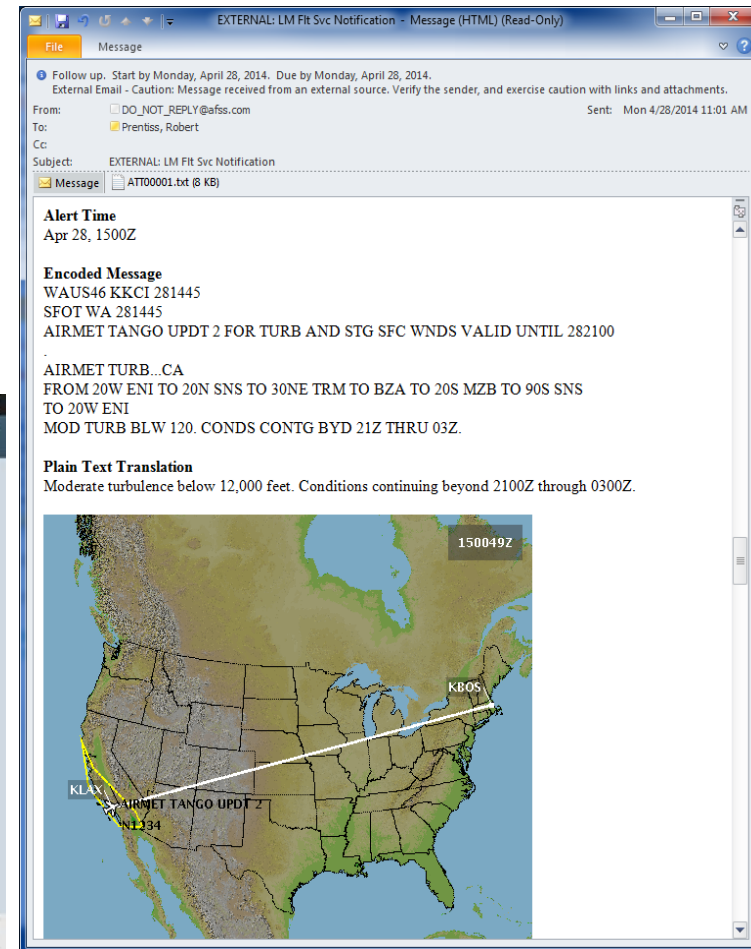
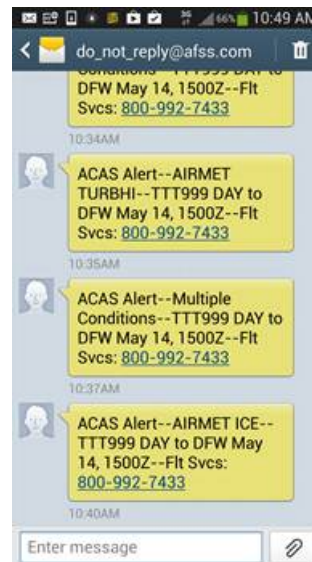


Garmin

Adverse Condition Alerting Service (ACAS)

- Free service, operational since October 2012
- Monitors flight plans after briefing/file, sends alerts to pilots for new or modified adverse conditions
 - TFRs, Closed/Unsafe Airports/Runways, SIGMETs Convective SIGMETs, AIRMETs, **CWAs**, **Urgent PIREPs**, Severe Wx Warnings & Watches
- Preflight delivery via Email, text msg,
- Inflight delivery via SATCOM devices: spidertracks, Honeywell Sky Connect, DeLorme, Garmin

43% of surveyed pilots said there were adverse conditions they would not have known about without the ACAS



Inflight Electronic PIREP Submission

Three Submission Models

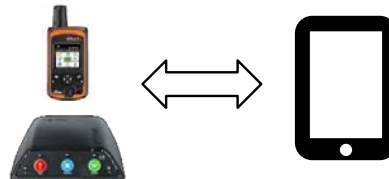
Satellite Communications Devices with Integrated Display



**Honeywell
Sky Connect**

Honeywell SkyConnect and Aerovie available by Oshkosh AirVenture

Satellite Communications Devices as Conduit

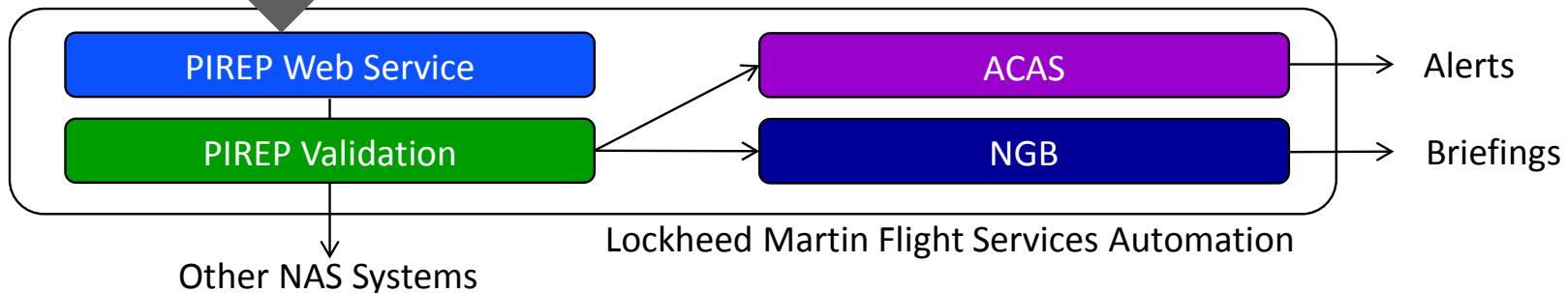


Additional vendors to follow shortly

Mobile App, Internet Connectivity, Store & Forward When Necessary



Aerovie



Submission UI

Free App In Apple Store

Cancel

ADD REPORT

WHEN: **NOW**

NOW

30 MINS AGO

Minutes ago the report occurred

LOCATION:

GPS

MANUAL

ALTITUDE FL000

CALLSIGN

N1303H

TYPE

SR22

REMARKS

SHARING

Share on social network.

ADD PHOTO

RIDE: **Select ride comfort**

TURB. BASES

TURB. TOPS

Occasional

Continuous

PRECIPITATION: **Select Weather**

Wind Deg: 270

Knots: 32

Visibility

N/A

CLOUD BASES

CLOUD TOPS

Clouds

Clear

Few

Sct

Bkn

Ovc

ICING: **Select Icing Conditions**

Outside Air Temperature: 15 C

ICING BASES

ICING TOPS

Clear

Rime

Mixed

SUBMIT REPORT

Common UI Themes:

- Preconfigured aircraft type and tail number / call sign
- Auto-fill (with optional assist) for time, location
- Pilot is primarily concerned with characterizing conditions

Minimize heads-down time!

PIREPS
TIME: 01:27UTC
ALTITUDE: 6200FT
SKY COVER:
CLEAR SKY
WIND DIRECTION: 33
WIND SPEED: 17KT
TURBULENCE: NONE
AIRCRAFT: SR22
REMARKS:
AEROVIEREPORTS
ORIGINAL PIREP TEXT:
PVB UA
/OV DBQ003023
/TM 0127
/FL062
/TP SR22
/SK SKC
/WV 03317KT
/TB NEG

Press the "ENT" key to return
to the base page

7/23 Test Flight - Cirrus
Perspective / G1000 MFD via
XM Sat feed.

