

# Flight Operations Support Issues

*ADF's View/Aircraft Dispatch Perspective*

Joseph J Miceli  
Air Line Dispatchers Federation  
F/PAW – NBAA October 21, 2010  
Atlanta, Georgia



# The Aircraft Dispatcher

## *“ONE STOP SHOPPING”*



Enroute Weather,  
Turbulence,  
Emergencies,  
Security, Economic  
Savings, Diversions,  
Aircraft Performance,  
Ops Specs,

Joseph J. Miceli  
Airline Dispatchers Federation  
F/PAW – NBAA October 21, 2010  
Atlanta, Georgia



# Triangle of Safety



**PILOT/DISPATCHER/ATC CONTROLLER**

Joseph J Miceli  
Airline Dispatchers Federation  
F/PAW – NBAA October 21, 2010  
Atlanta, Georgia



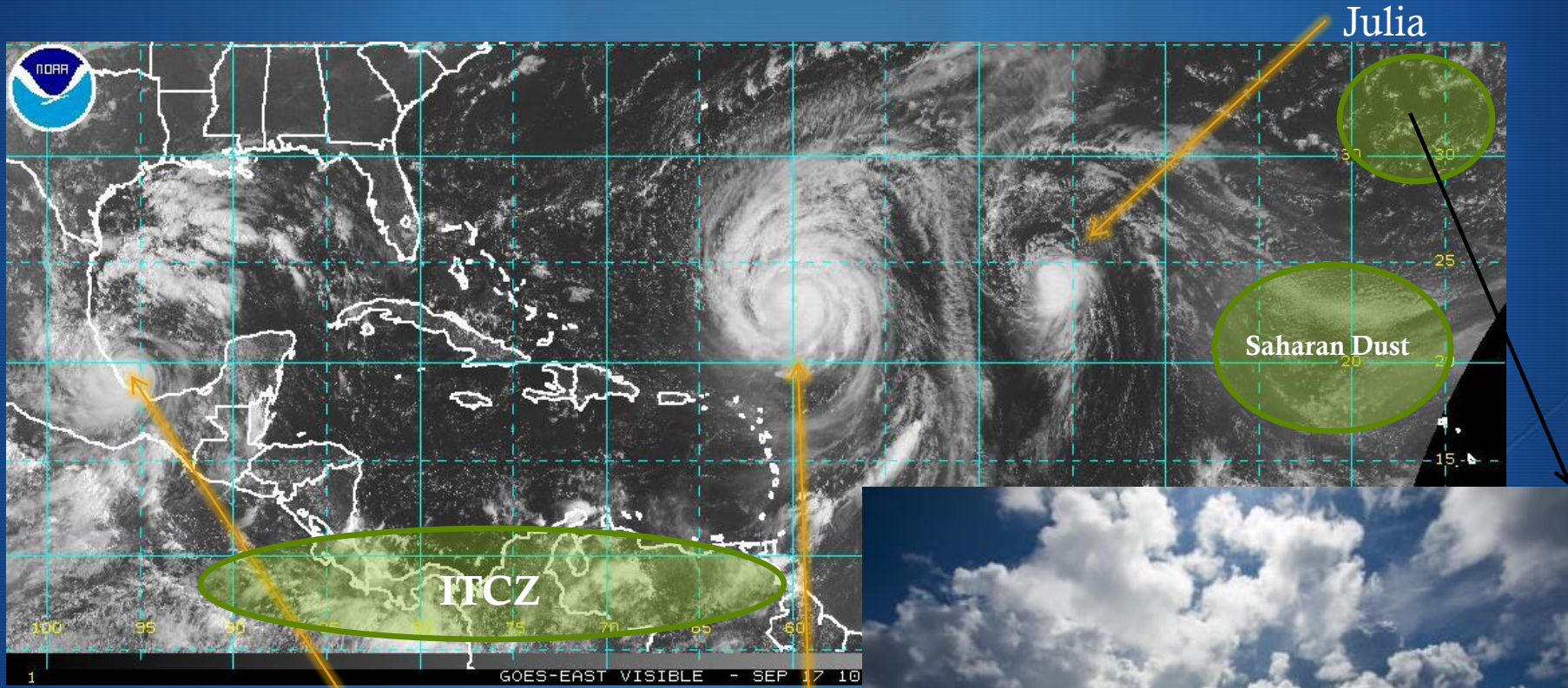
# Issues facing dispatchers today:

- Weather
- Increasing demands on the current NAS
- Increasing governmental regulations and fines
- Volcanic disruptions
- Polar Operations
- Security
- Economic Cost Controls
- Flight crews who don't understand the roll of a dispatcher
- Maintenance deferrals/restrictions

Joseph J. Miceli  
Airline Dispatchers Federation  
F/PAW – NBAA October 21, 2010  
Atlanta, Georgia



# Weather



Karl

Igor

Julia

Saharan Dust

ITCZ



Joseph J. Miceli  
Airline Dispatchers Federation  
F/PAW – NBAA October 21, 2010  
Atlanta, Georgia

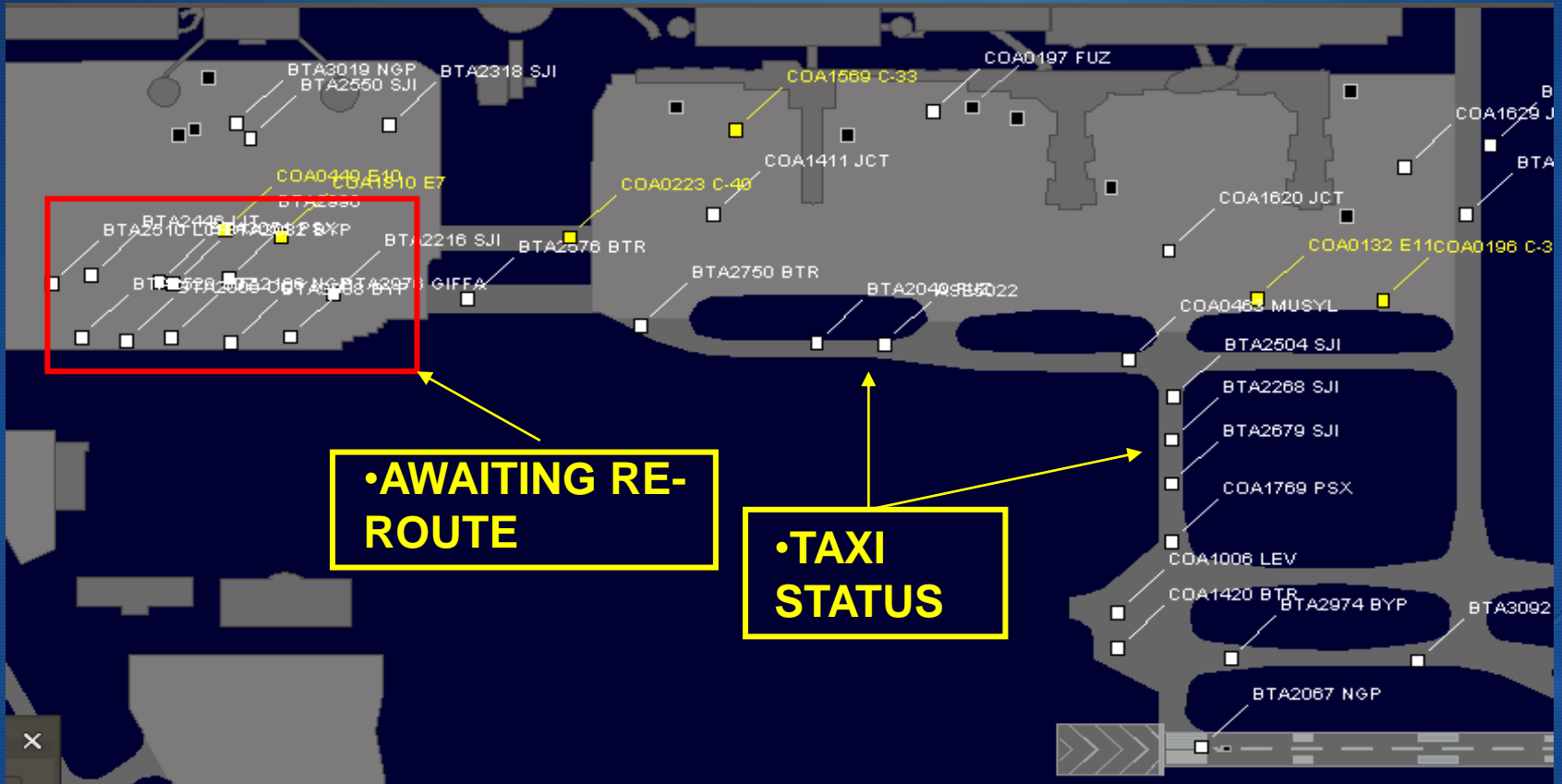
# Increasing demand on the NAS



Joseph J. Miceli  
Airline Dispatchers Federation  
F/PAW – NBAA October 21, 2010  
Atlanta, Georgia



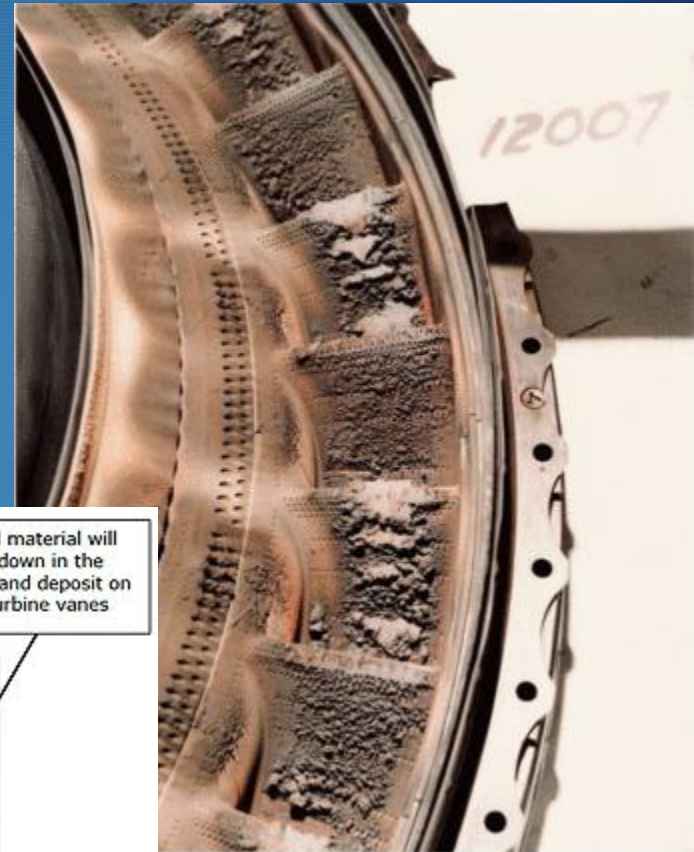
# Increasing Governmental Regulations/Fines



Joseph J. Miceli  
Airline Dispatchers Federation  
F/PAW – NBAA October 21, 2010  
Atlanta, Georgia



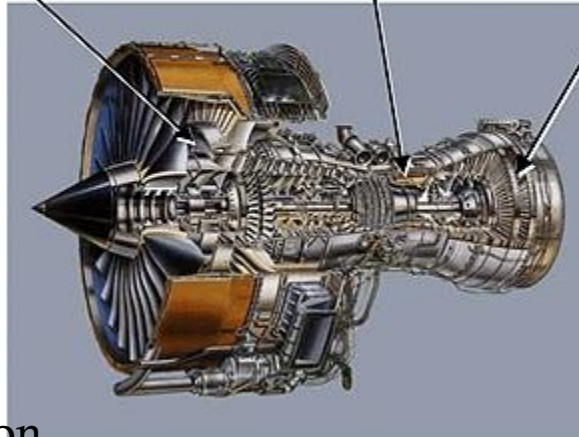
# Volcanic Ash



Abrasive particles can erode compressor blades edges, reducing compressor performance

Glass particles will melt in the combustion chamber, if high thrust rating is used

Melted material will cool down in the turbine and deposit on the turbine vanes

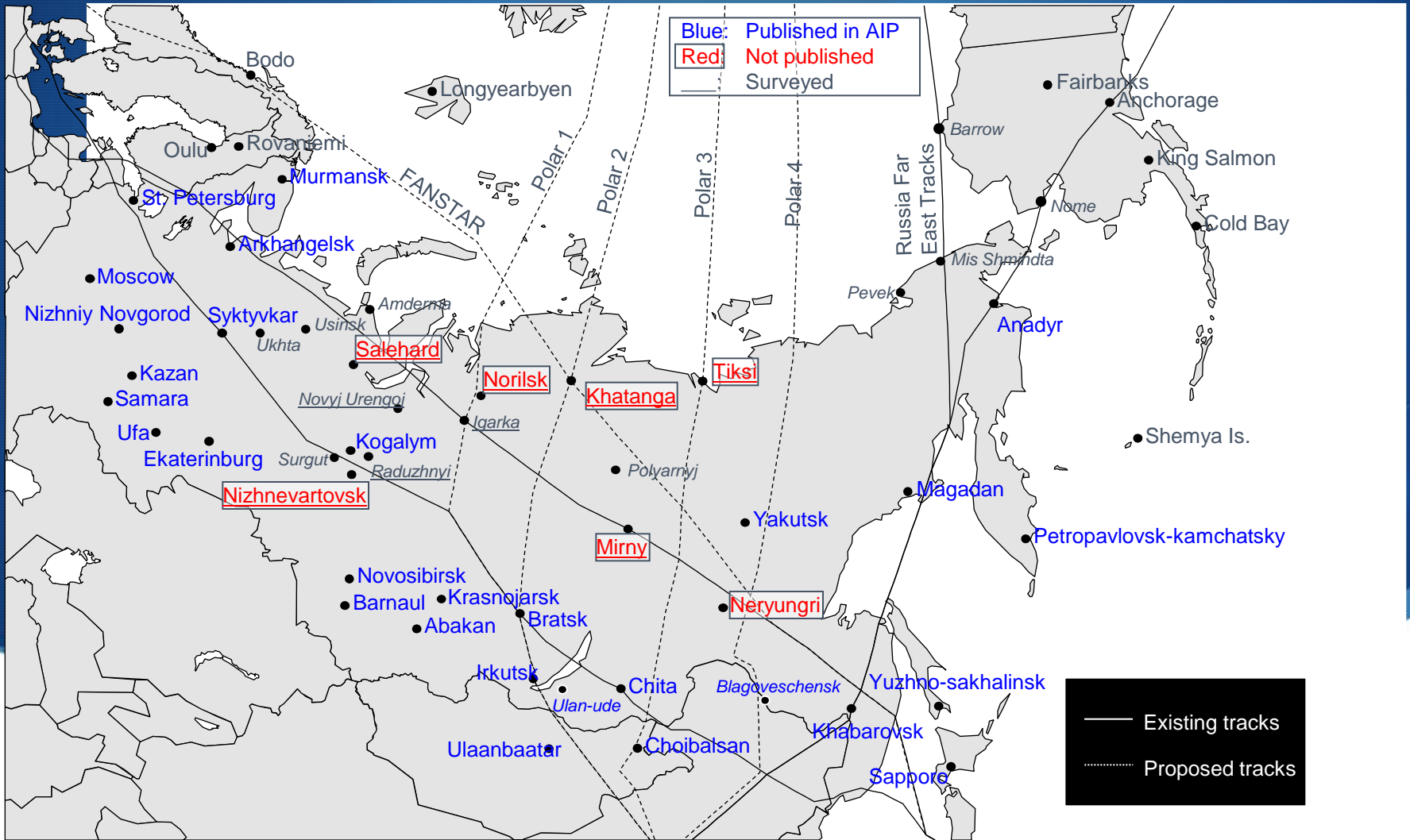


Joseph J. Miceli  
Airline Dispatchers Federation  
F/PAW – NBAA October 21, 2010  
Atlanta, Georgia





# Polar Ops/Enroute PET



# Security



Joseph J. Miceli  
Airline Dispatchers Federation  
F/PAW – NBAA October 21, 2010  
Atlanta, Georgia



# Economic Cost Controls



Joseph J. Miceli  
Airline Dispatchers Federation  
F/PAW – NBAA October 21, 2010  
Atlanta, Georgia



# Flight crews who don't understand the roll of a aircraft dispatcher



Joseph J. Miceli  
Airline Dispatchers Federation  
F/PAW – NBAA October 21, 2010  
Atlanta, Georgia



# Maintenance Costs / Deferrals



Joseph J. Miceli  
Airline Dispatchers Federation  
F/PAW – NBAA October 21, 2010  
Atlanta, Georgia



# Thank You

ADF's View/Aircraft Dispatch Perspective

Joseph J Miceli  
Air Line Dispatchers Federation  
F/PAW – NBAA October 21, 2010  
Atlanta, Georgia



We invite you to contact us and arrange  
for a visit and first hand experience at  
an AOC.



Joseph J Miceli  
Air Line Dispatchers Federation  
F/PAW – NBAA October 21, 2010  
Atlanta, Georgia

