

NNEW and the 4-D Weather Data Cube FY10 Capability Evaluation

Mark Miller, NWS NextGen Program Manager

Tom Ryan, FAA NNEW Program Manager

October 21, 2010

NextGen Comic from Dilbert



The wording used in this cartoon strip is the original wording as printed on 06/26/2010, and was not modified in any way for the purposes of this briefing.

Participants

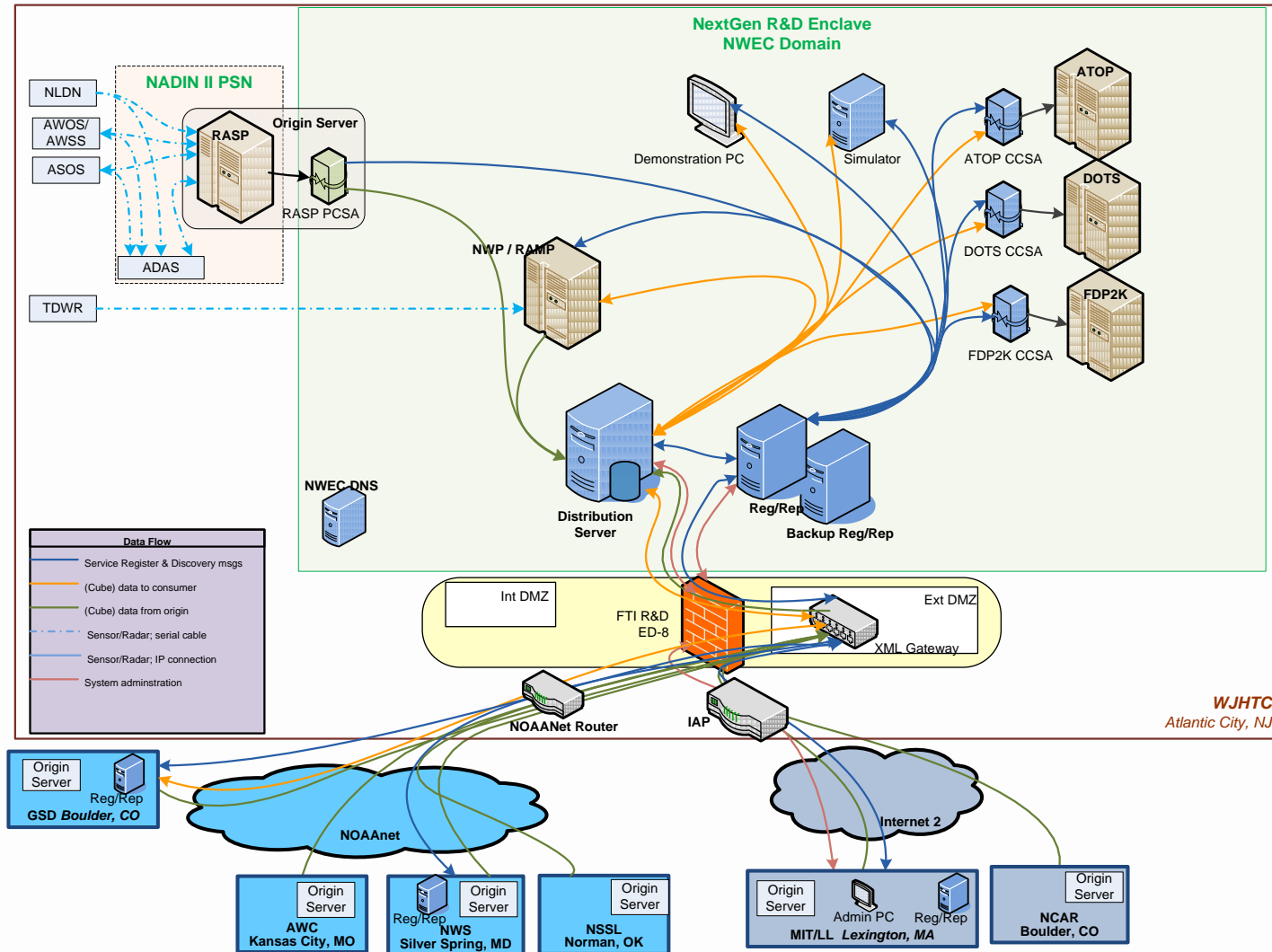
- NOAA
 - NWS Office of Science & Technology (OST)
 - NWS Meteorological Development Laboratory (MDL)
 - Global Science Division (GSD)
 - NWS Aviation Weather Center (AWC)
 - National Severe Storms Laboratory (NSSL)
- FAA Weather Offices
 - Aviation Weather Group (NextGen & Ops Planning)
 - Aviation Weather Services (Tech Ops)
- National Center for Atmospheric Research (NCAR)
- Massachusetts Institute of Technology / Lincoln Laboratory (MIT/LL)



Environment

- FTI R&D Enclave
- NOAANet
- FTI to NOAANet direct connection!
- Internet
- WCS-RI
- WFS-RI
- Registry/Repository

Environment



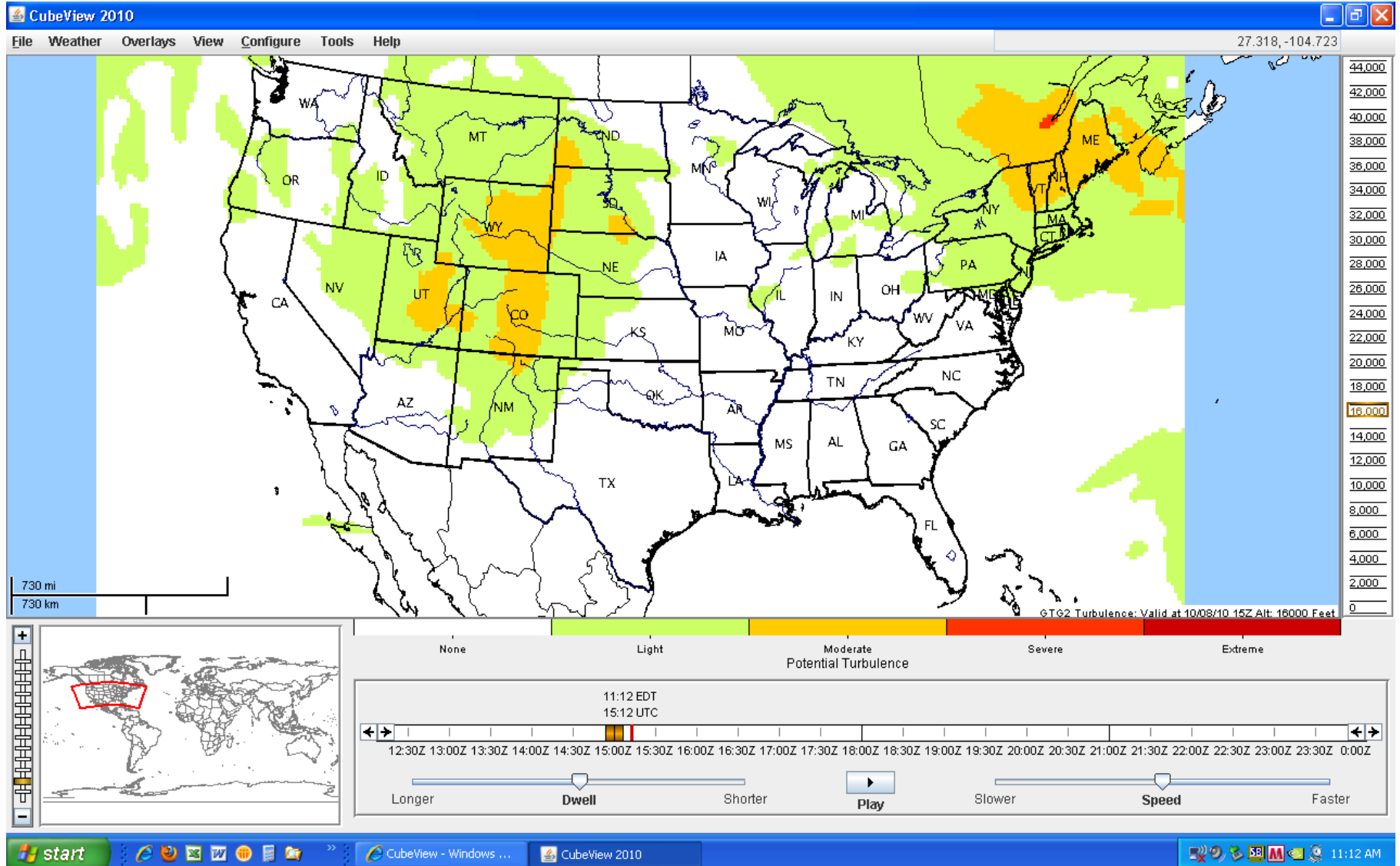
Results

- Legacy weather systems published data
- Legacy weather systems consumed data
- A non-operational decision support tool consumed data
- Agencies shared a Technical Architecture Framework of standards
- Demonstrated the federation of Registry/ Repository (RegRep) data across agency boundaries
- Successfully tested Version 2.0 requirements for WCS/WFS RI functionality
- Demonstrated the prototype Network Enabled Verification Service (NEVS) as a data consumer

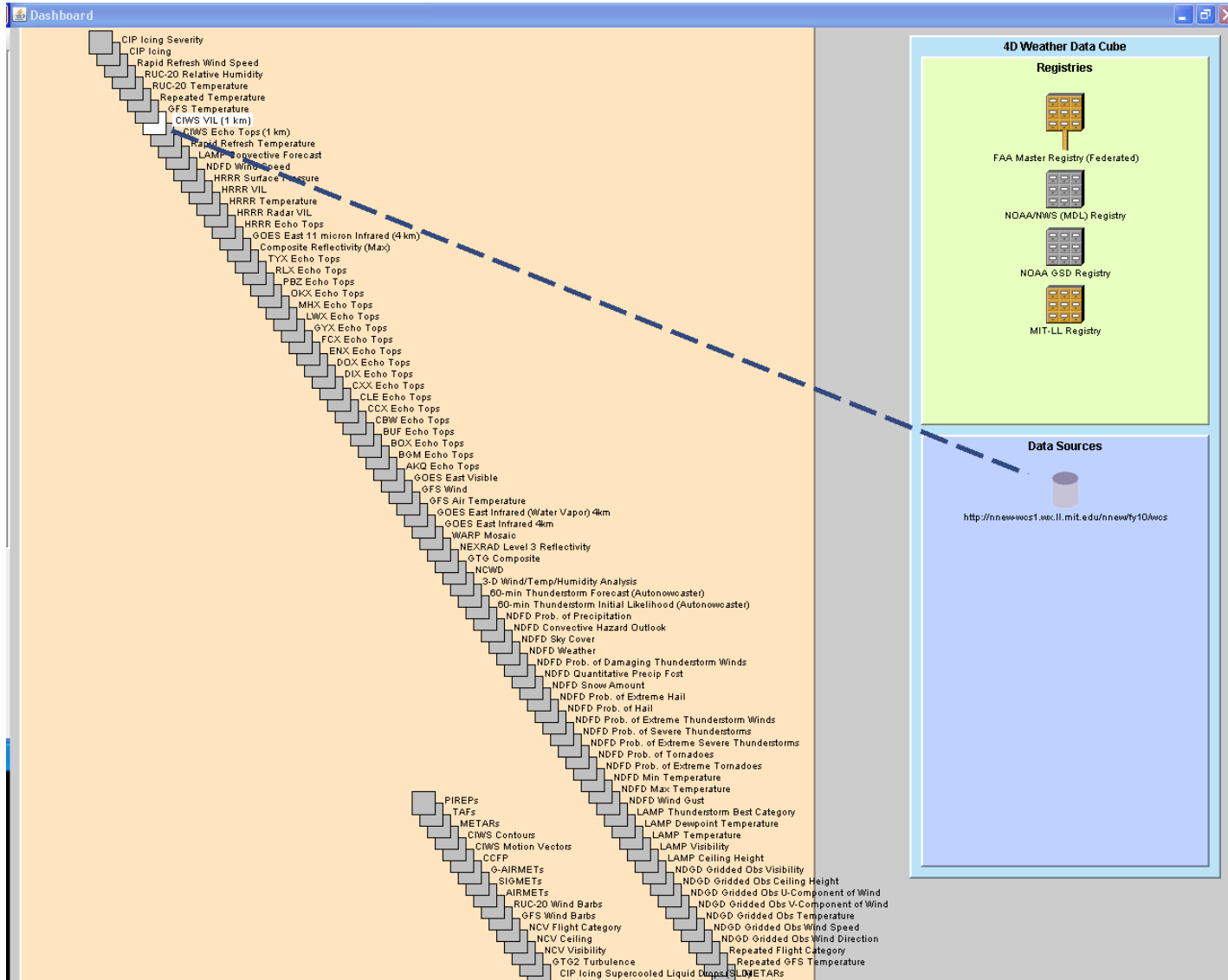
Results

- 300 data sets were made available via 4-D Weather Data Cube and NNEW
- 60 data sets were thoroughly tested
- www.faa.gov/nextgen/nnew
 - Click on Capability Evaluation
 - <http://weather.aero/nnew/fy10/cubeview/>
- <http://www.weather.gov/nextgen/>

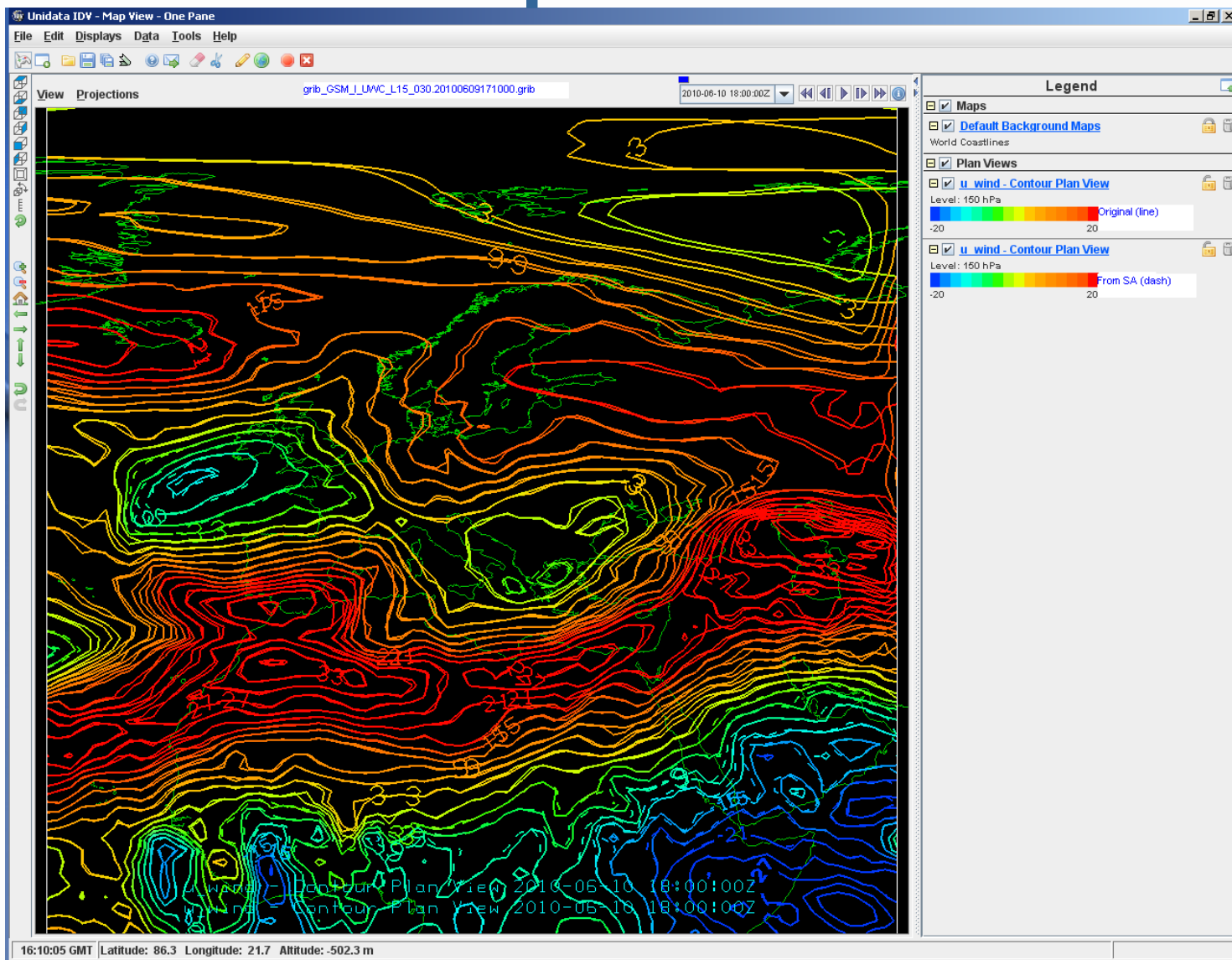
CubeView



Dashboard



Non-Operational DST



What's Next?

- Develop additional RI capability
- Broaden set of data providers and R&D consumers
- Performance and latency testing and development of services
- Solidify performance requirements

Questions?