

Segment 4—Storm Forecasting for Air Traffic

Integration with Air Traffic Management Decision Tools

Presented to: FPAW

By: Dave Pace

Date: October 22, 2009



**Federal Aviation
Administration**



ATM-Weather Integration Plan

- **Plan complete as of Sep 17**
- **Delivered to and accepted by the NextGen Executive Weather Panel (the original taskers)**
- **Results of the year-long project posted on web (see last slide)**
- **Now implementation begins**

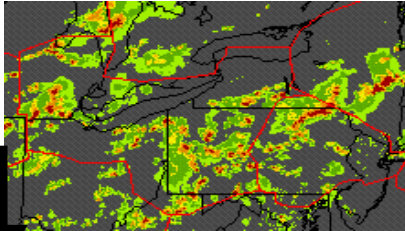


Core ATM-Weather Integration Concept

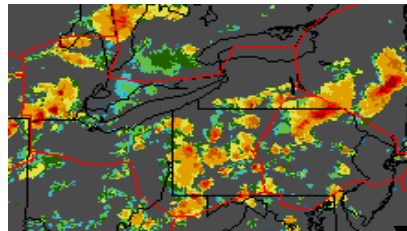
- 1. With guidance from user community, translate weather into ATM impacts**
- 2. Working inside user community teams, make the ATM impacts part of the DST logic**

Example: Translate Wx to Impacts

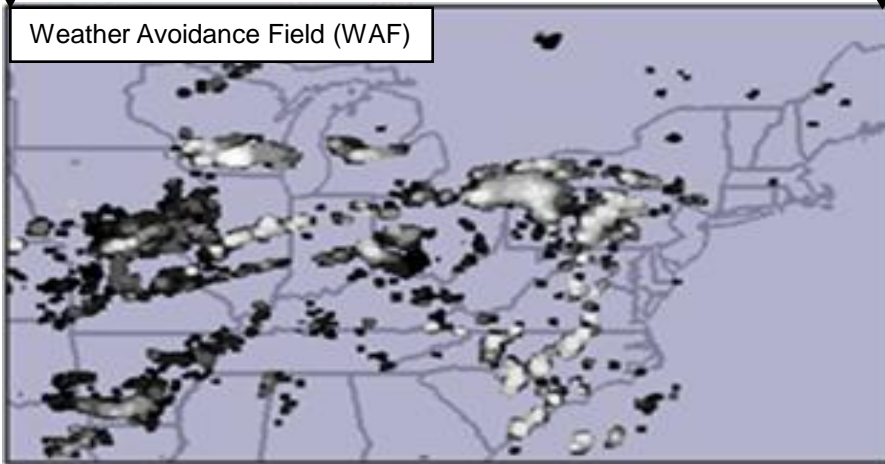
Precipitation



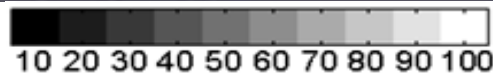
Echo Tops



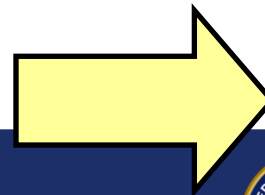
Weather Avoidance Field (WAF)



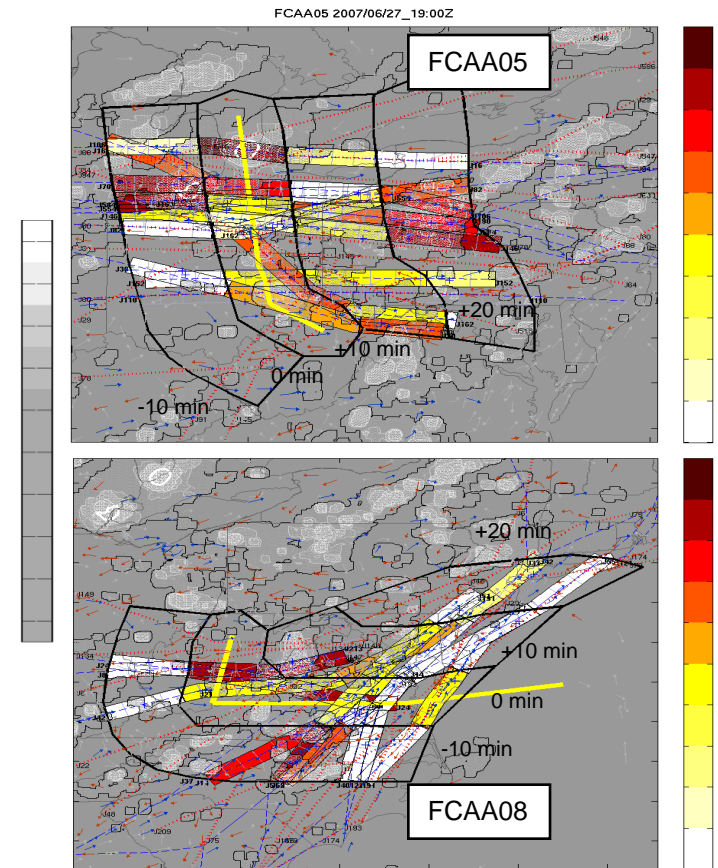
Pilot Deviation Prob



Weather

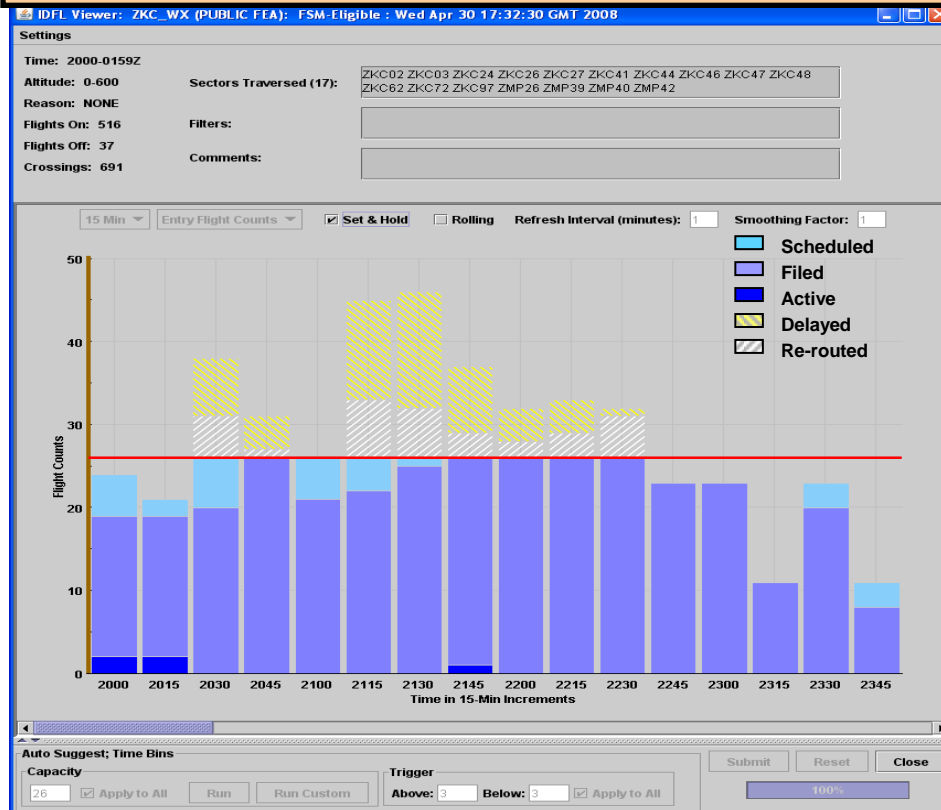


Estimated Airspace Availability

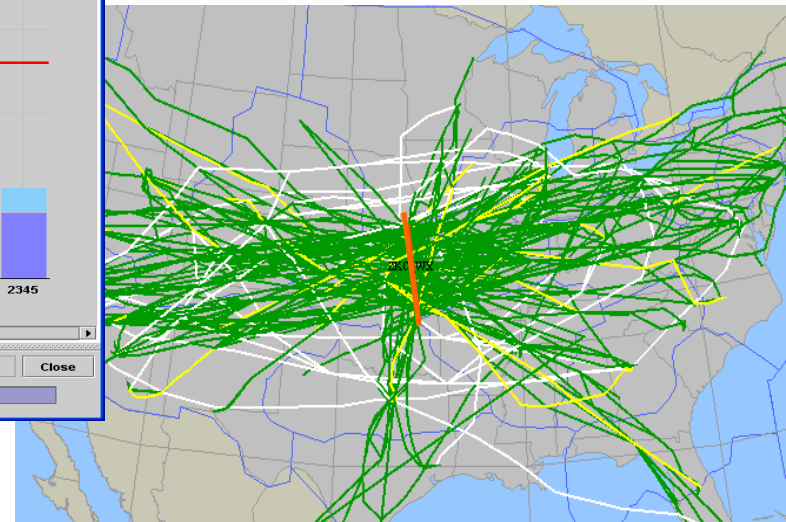


Example: Impacts into DST Logic

DST: System Enhancements for Versatile Electronic Negotiation (SEVEN)



Capacity “dialed down” iaw impacts forecast



Plan published September 2009

- Available for download from JPDO library page (or shortcut: <http://snipurl.com/ryp5s>)
- Print with caution—330 pages
- Begin executing the Plan this year
- Update (v2.0) by end of FY10 will document developments

