

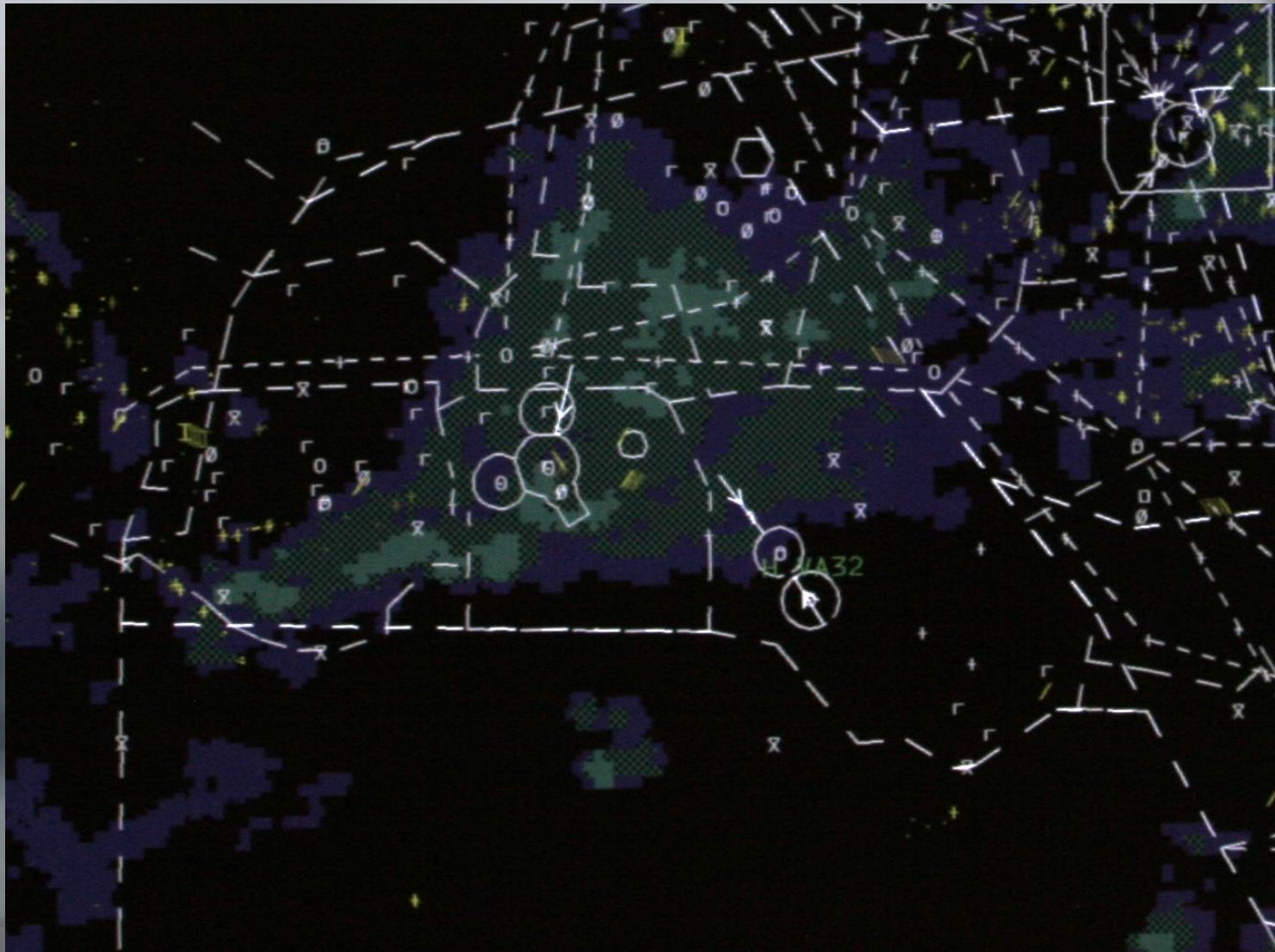
Matthew Tucker
National Air Traffic Controllers Association
Jacksonville ARTCC

CONTROLLERS MOST WANTED FOR AVIATION WEATHER

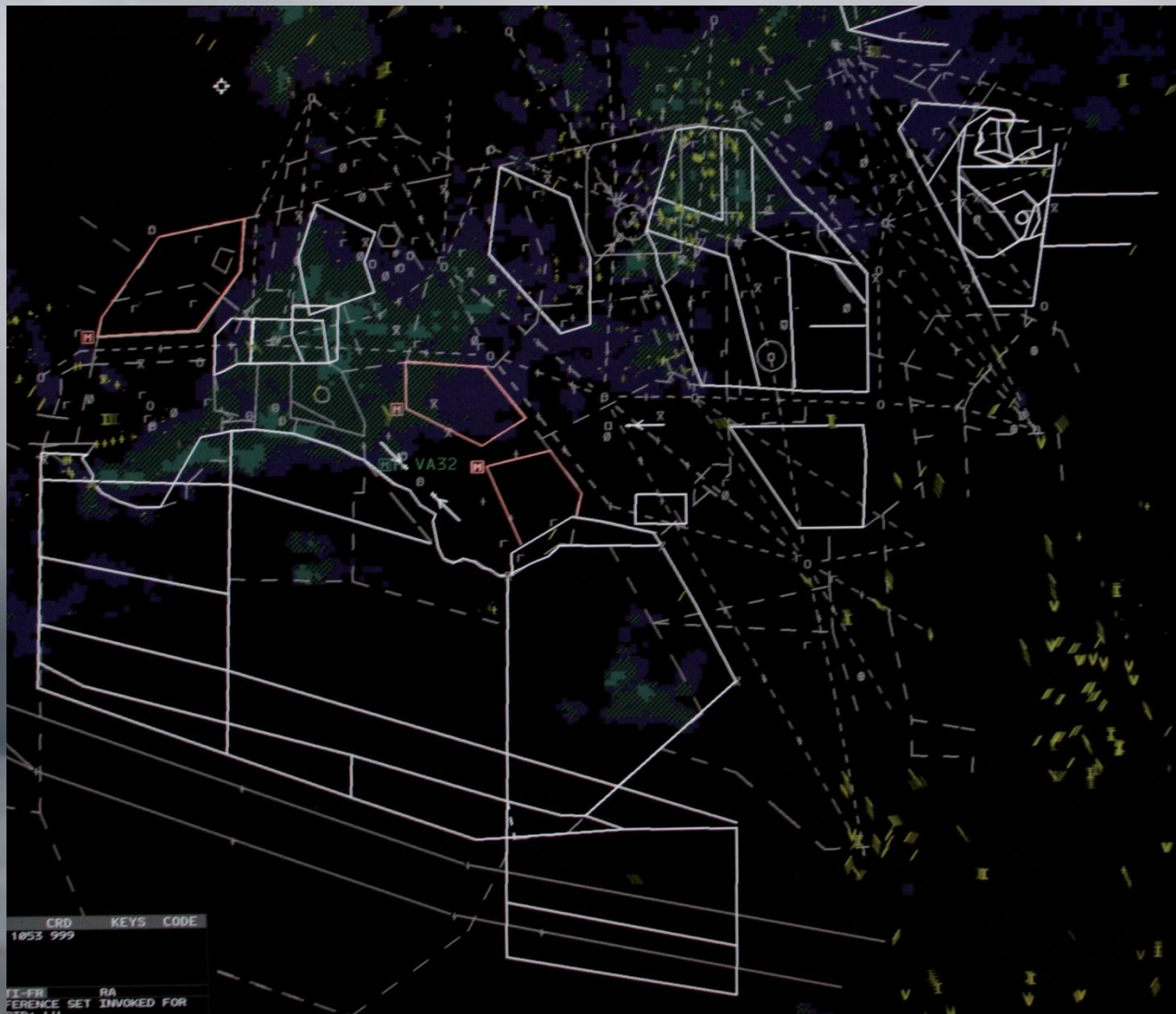


NATIONAL AIR TRAFFIC CONTROLLERS ASSOCIATION
WE GUIDE YOU HOME

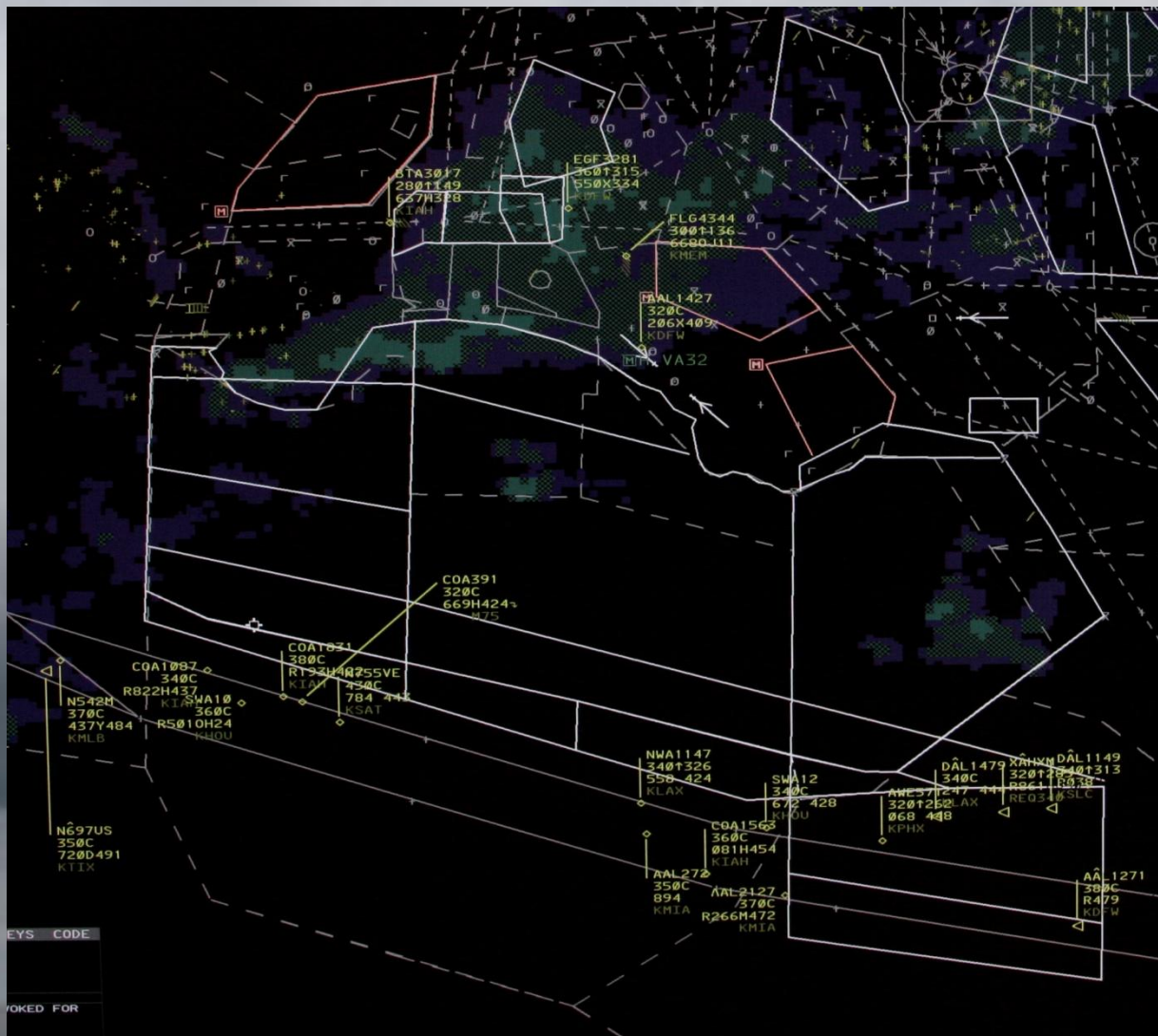
Faster update rates for NEXRAD on the Controllers scope



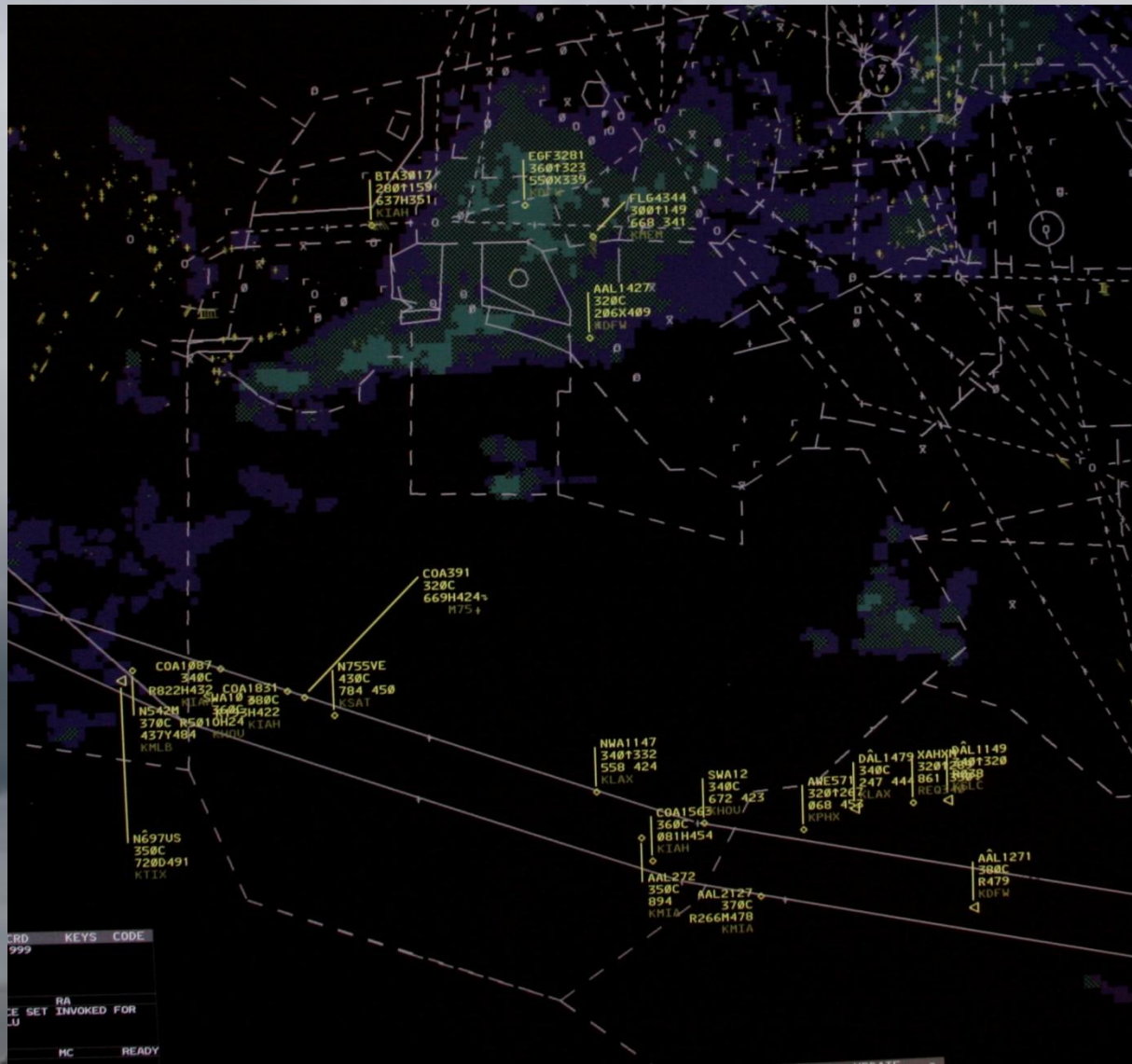
ZJX West Area Special Use Airspace



ZJX R11 and R30 SUA's Hot



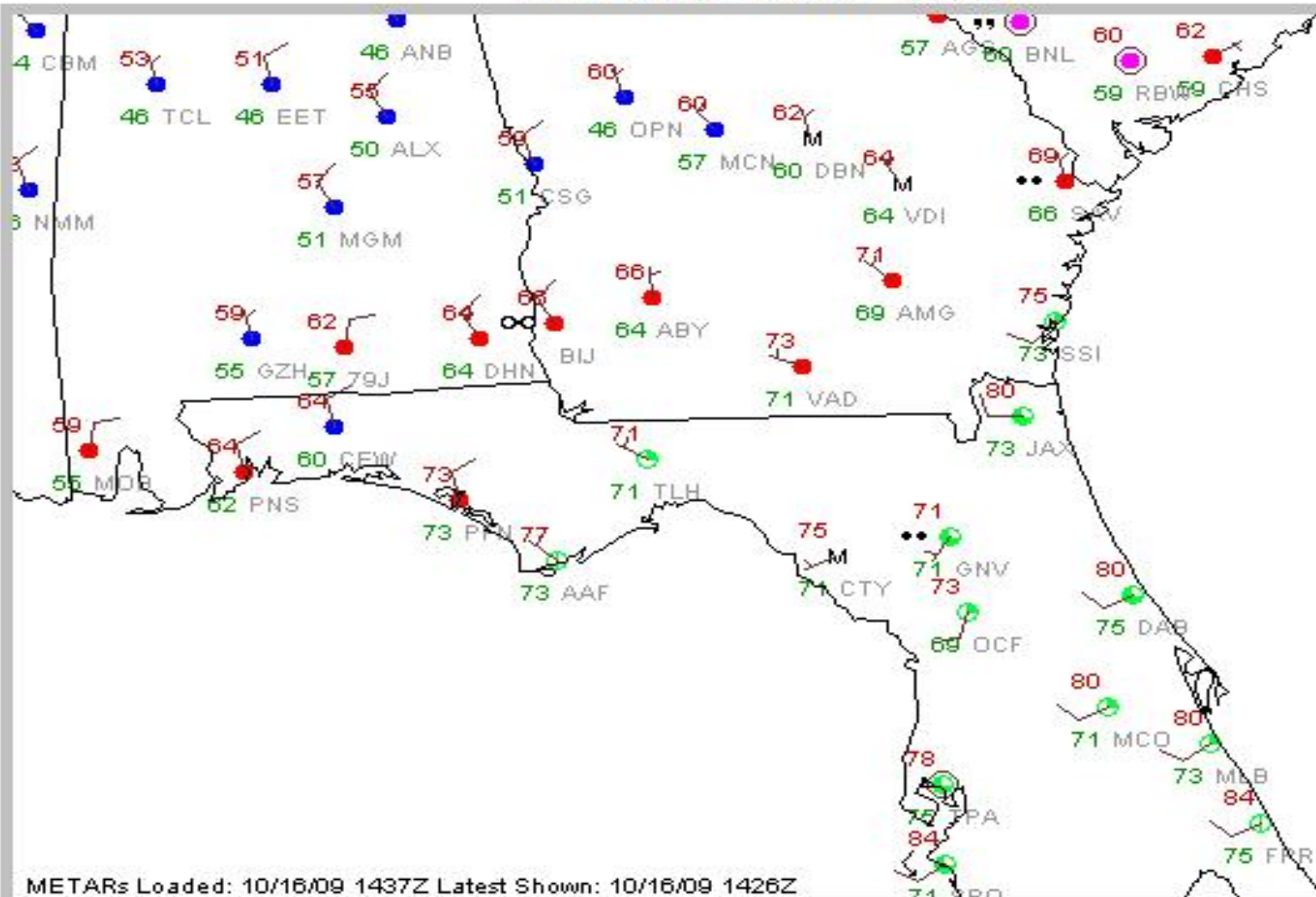
ZJX R11 and R30 without SUAs selected



Real-time Airport Weather Information

MULTI-FR	RA
PNS 1117 SP 09005KT 7SM R	
A BKN032 OVC100 22/22 A30	
00 RMK A02 P0039 ↓	
	MC
	READY
—	

METARs Java Tool



Map:

METAR Data Options:

Show METARs:

Overlays:

Overview...

Reset

Un-zoom

Auto-update

Data Key...

☒ Temp

☒ Weather

☒ Dewpoint

☐ All

☐ Ceiling

☐ Visibility

☒ Sky Cover

☐ Altimeter

☒ Wind

☒ Station ID

☐ All

☐ More

☒ Default

☐ Fewer

☐ TAFs

☐ ARTCC Boundaries

☐ Counties

☐ Highways

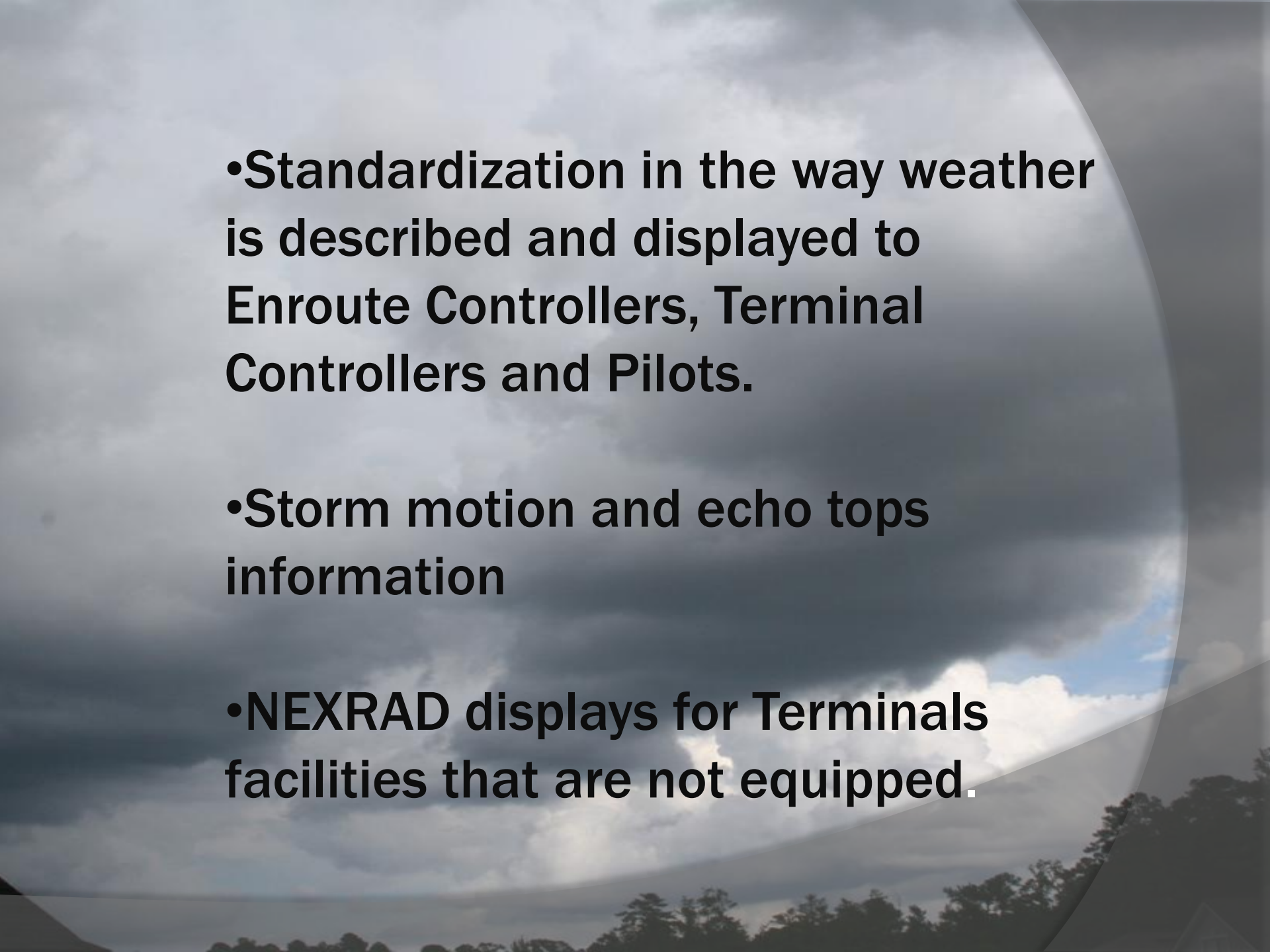
☐ Rivers

Real-time RVR information

RVR Status Monitor

17:13:45 UTC 10-16-2009

RVR Airports						
<u>ANC</u> 6500	<u>ATL</u> 6500	<u>BFI</u> 6500	<u>BNA</u> 6500	<u>BOS</u> 6500	<u>BUF</u> 6500	<u>BUR</u> (na)
<u>BWI</u> 6500	<u>CLE</u> 6500	<u>CLT</u> 6500	<u>CVG</u> 6500	<u>DAL</u> 6500	<u>DCA</u> 6500	<u>DEA</u> 6500
<u>DEB</u> 6500	<u>DFA</u> 6500	<u>DFB</u> 6500	<u>DPA</u> 6500	<u>DTW</u> 6500	<u>EUG</u> 6500	<u>EWR</u> 6500
<u>GEG</u> 6500	<u>GJT</u> 6500	<u>HOU</u> 6500	<u>HPN</u> 6500	<u>IAD</u> 6500	<u>IAH</u> 6500	<u>ILG</u> 6500
<u>IND</u> 6500	<u>ISP</u> 6500	<u>JFK</u> 6500	<u>LAX</u> 6500	<u>LGA</u> 6500	<u>LGB</u> 6500	<u>LMT</u> 2800
<u>MCI</u> 6500	<u>MCO</u> 6500	<u>MDW</u> 6500	<u>MEM</u> 6500	<u>MFR</u> 6500	<u>MIA</u> 6500	<u>MRY</u> 6500
<u>MSP</u> 6500	<u>MWH</u> 6500	<u>OAK</u> 6500	<u>ONT</u> 6500	<u>ORN</u> 6500	<u>ORS</u> 6500	<u>PAE</u> 6500
<u>PDX</u> 6500	<u>PHL</u> 6500	<u>PHX</u> 6500	<u>PIT</u> 6500	<u>PSC</u> 6500	<u>RDU</u> 6500	<u>SAN</u> 6500
<u>SDF</u> 6500	<u>SEA</u> 6500	<u>SFO</u> 6500	<u>SJC</u> 6500	<u>SLC</u> 6500	<u>SME</u> 6500	<u>SNA</u> 6500
<u>STL</u> 6500	<u>TPA</u> 6500	<u>VNY</u> 6500				

A dramatic, cloudy sky with dark, heavy clouds and a bright light source breaking through near the horizon, creating a lens flare effect. The bottom of the image shows the dark silhouettes of trees.

- Standardization in the way weather is described and displayed to Enroute Controllers, Terminal Controllers and Pilots.

- Storm motion and echo tops information

- NEXRAD displays for Terminals facilities that are not equipped.

Jacksonville Center Warp Display

