

Meteorological Modeling for Traffic Management

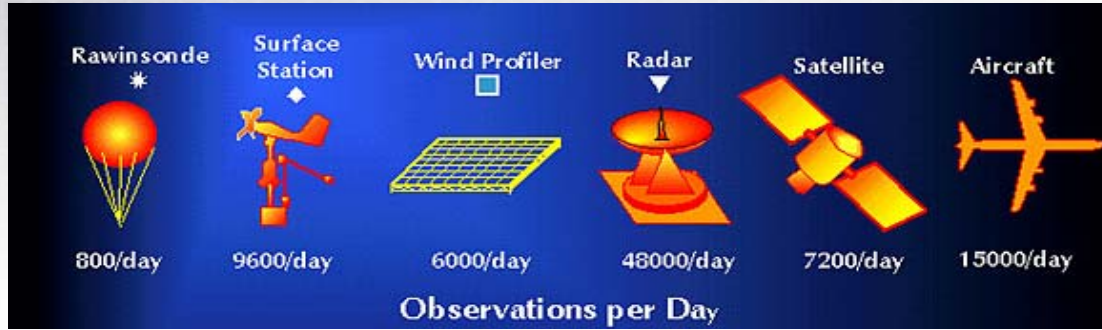
ENSCO, Inc.
Aerospace Sciences and Engineering
Division

10 November 2005

Weather Impacts on Air Traffic Management

- Air transportation is growing rapidly making management of limited airspace critical
- Majority of delays in air traffic within the NAS are due to adverse weather
 - Adverse weather often affects airspace and limits traffic to terminals
 - Limited planning of the interface between en-route and terminals compounds problem
- Improved weather forecast are required
 - National models lack sufficient temporal and spatial resolution to address traffic management needs
 - High resolution 4-D regional model is better solution
 - Presentation of forecast information to TM is as important as better forecasts

ENSCO Data Assimilation & Modeling



Launch Support



Emergency Response

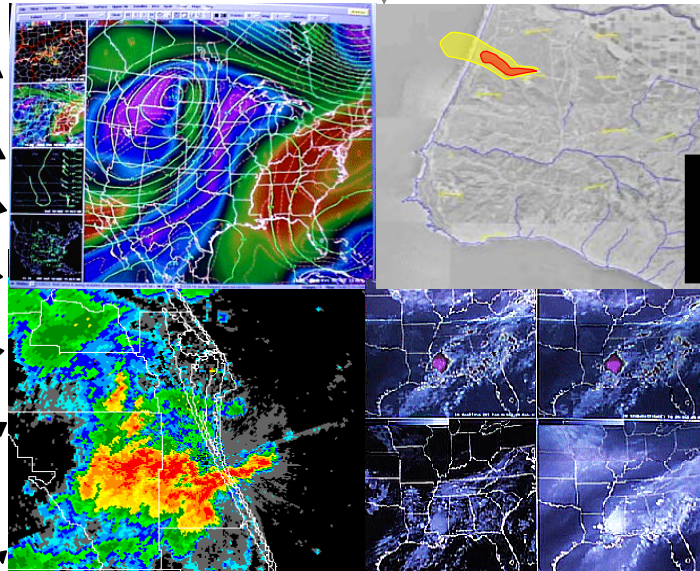


Aviation Support



Severe Weather Response

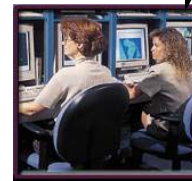
LOCAL DATA SETS



Data fusion

Forecast and safety modeling systems

Decision Products



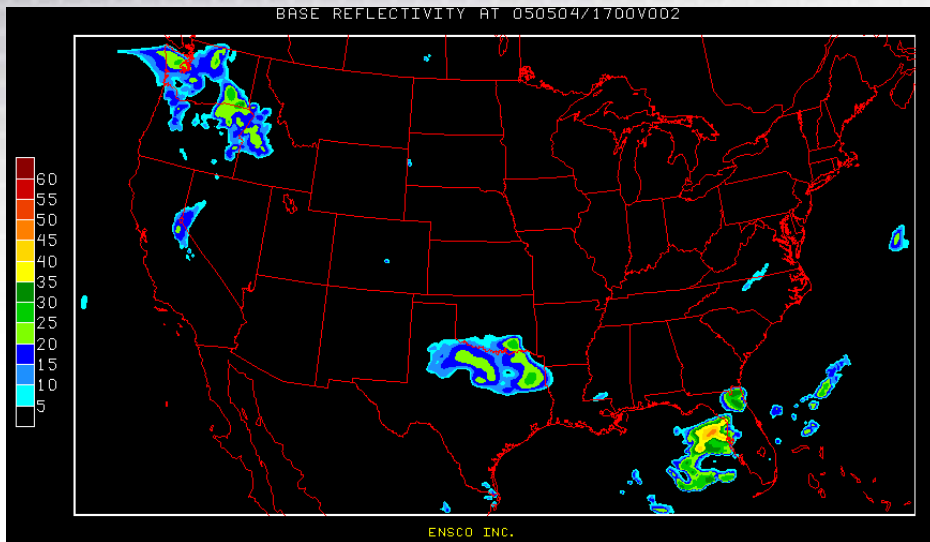
METWISE Predict Overview

- Proven model developed to forecast convection
 - Focused on explicit convection and supercell prediction
 - Can operate on local to hemispheric scales
 - Designed for optimization on parallel computing
 - Well-documented
 - International applications

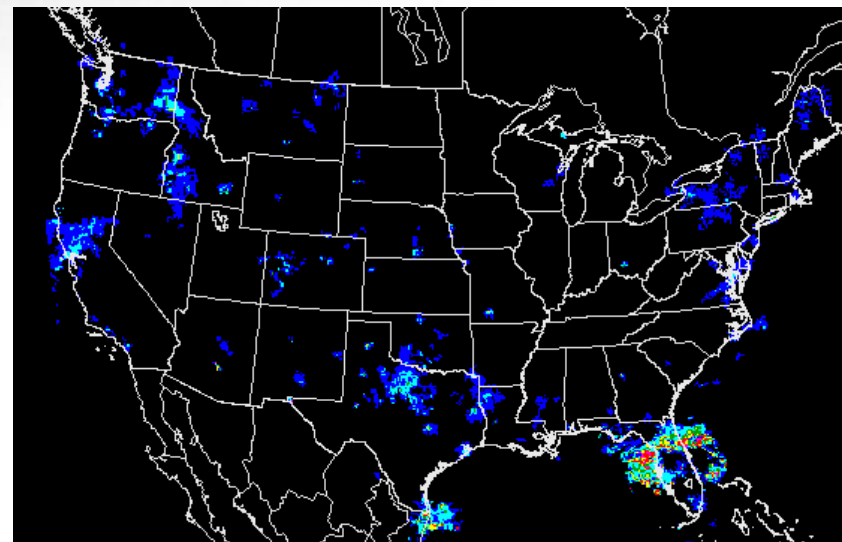
ENSCO Model Configuration

- Current (METWISE Predict)
 - Model runs 8 times per day (every 3 hours)
 - Forecast covers from 30 minutes to 9 hours
 - Forecasts provided in 30-minute increments
 - 12 km grid spacing over CONUS
- Added Value beyond current national models
 - Higher temporal and spatial resolution (vs. 20 km x 1 hr.)
 - Visualization, Time Animation, & Prognostic products not currently available with national models
 - Higher resolution regional forecasts can be produced (4km x 15 minutes)
- Future
 - Longer forecast periods are possible
 - Migration towards community model (WRF)
 - ENSCO continuously evaluates newest technology

4 May 05 – 15Z ARPS Model



ENSCO ARPS Initialization 15Z
Valid 17Z- 21Z (30-min intervals)



ENSCO MetWise National Radar
Valid 17Z- 21Z (30-min intervals)

