

***Partners in
Aviation Weather***

WSI

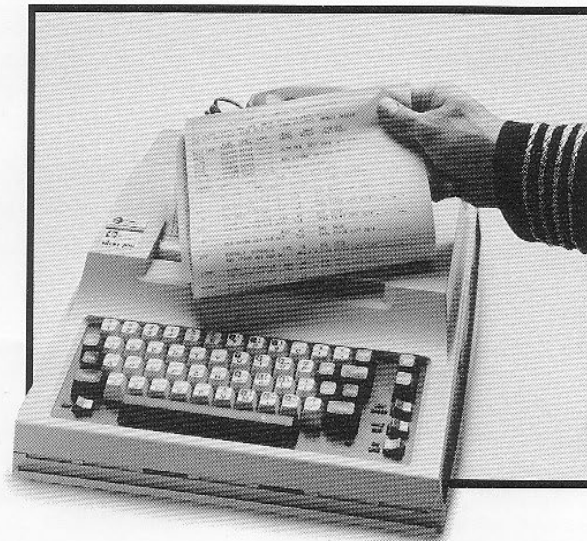
**AOPA Expo 2002
Palm Springs – October 23**

**Arlo Gambell
Director, Aviation Marketing**

***Some Perspectives From a
Commercial Aviation Weather
Provider***

The Early Years

**Reliable Flight Planning Advanced
To Its Simplest Form.**



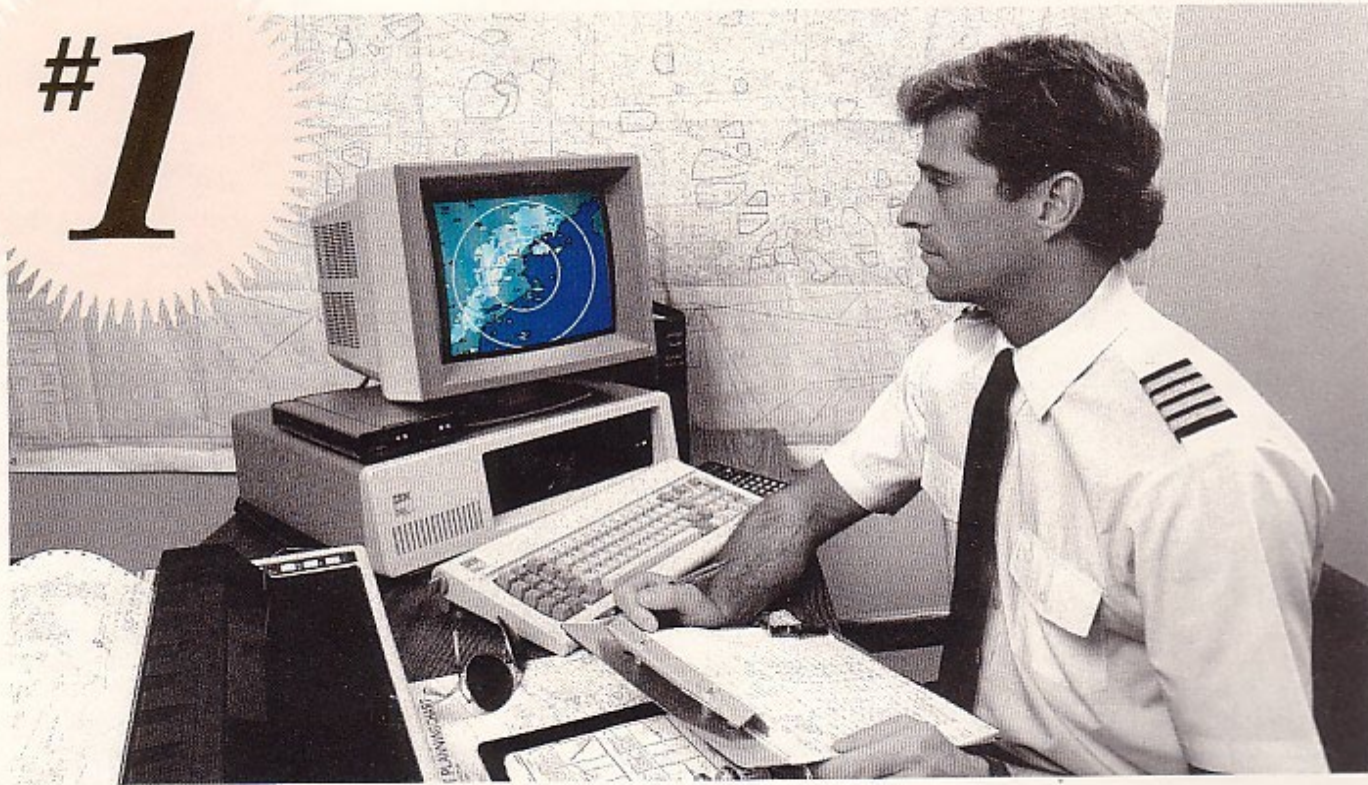
Introducing FLITEbrief.™

Official National Weather Service facsimile maps available on-line
with WSI FAXBRIEF





#1



Live Radar on Your PC!



WSI. Weather When It Really Matters.





Today.....

14:36 27-FEB-02 GMT Copyright WSI Corporation <http://www.wsicorp.com>

CURRENT SIGMETS

UPDATED 14:36Z 02/27/2002

ICING

SPC BASED ALOFT

TURBULENCE



Last Report: 271423z

DI - Flight Explorer 2.20 (Evaluation period - 33 days remaining)

File View Map overlays Tools Help

Flight list Lookup table Overlay detail Quick filter Select view Update view Create view Zoom out

1 - 09/28/1999 04:00 pm - NEXRAD 2km composite

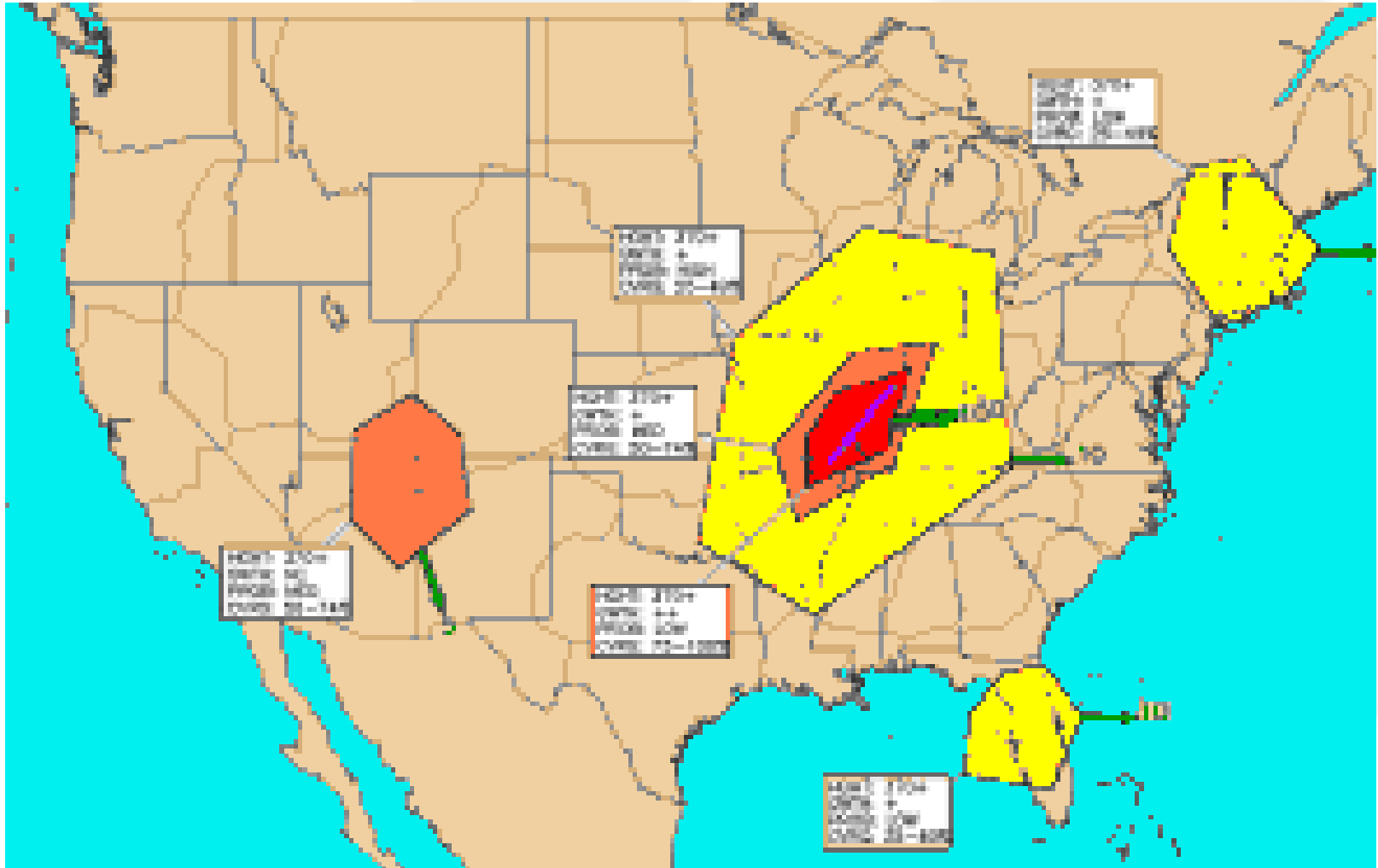
AAL200
370 519
LAX JFK
0763 07:51p

Running View: Default Weather: Current Tracks: 12 / 5348 Current: 04:22:44p Last update: 04:22:36p

For Help, click Help Topics on the Help Menu.

Start Inbox - Microsoft O... ASD Images - Mes... DI - Flight Expl... untitled - Paint 3com 4:21 PM

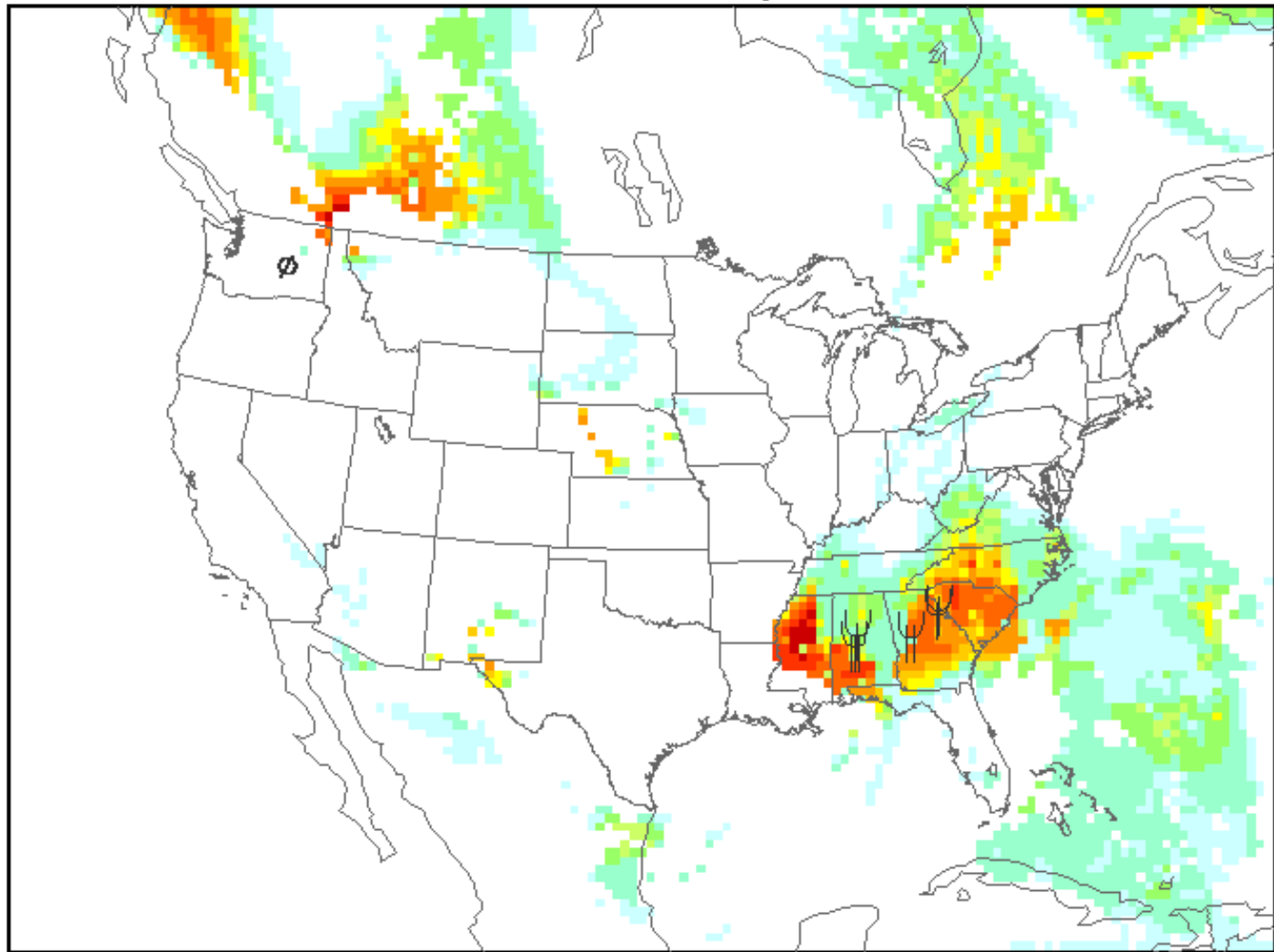
CCFP



Icing potential at FL150

Analysis valid 1700 UTC Tue 15 Oct 2002

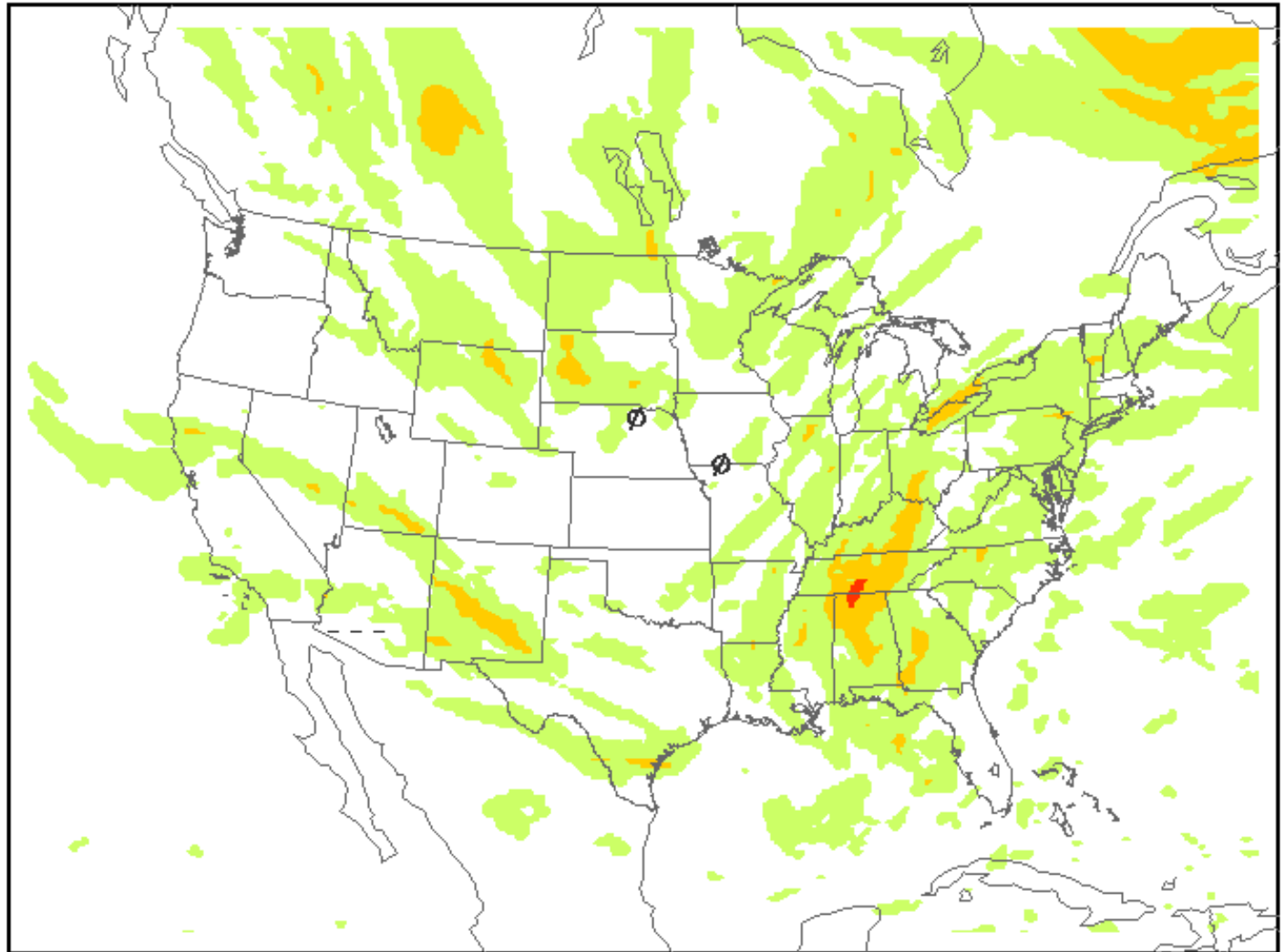
CIP





Turbulence forecast at FL330

Analysis valid 1700 UTC Tue 15 Oct 2002



None

LGT

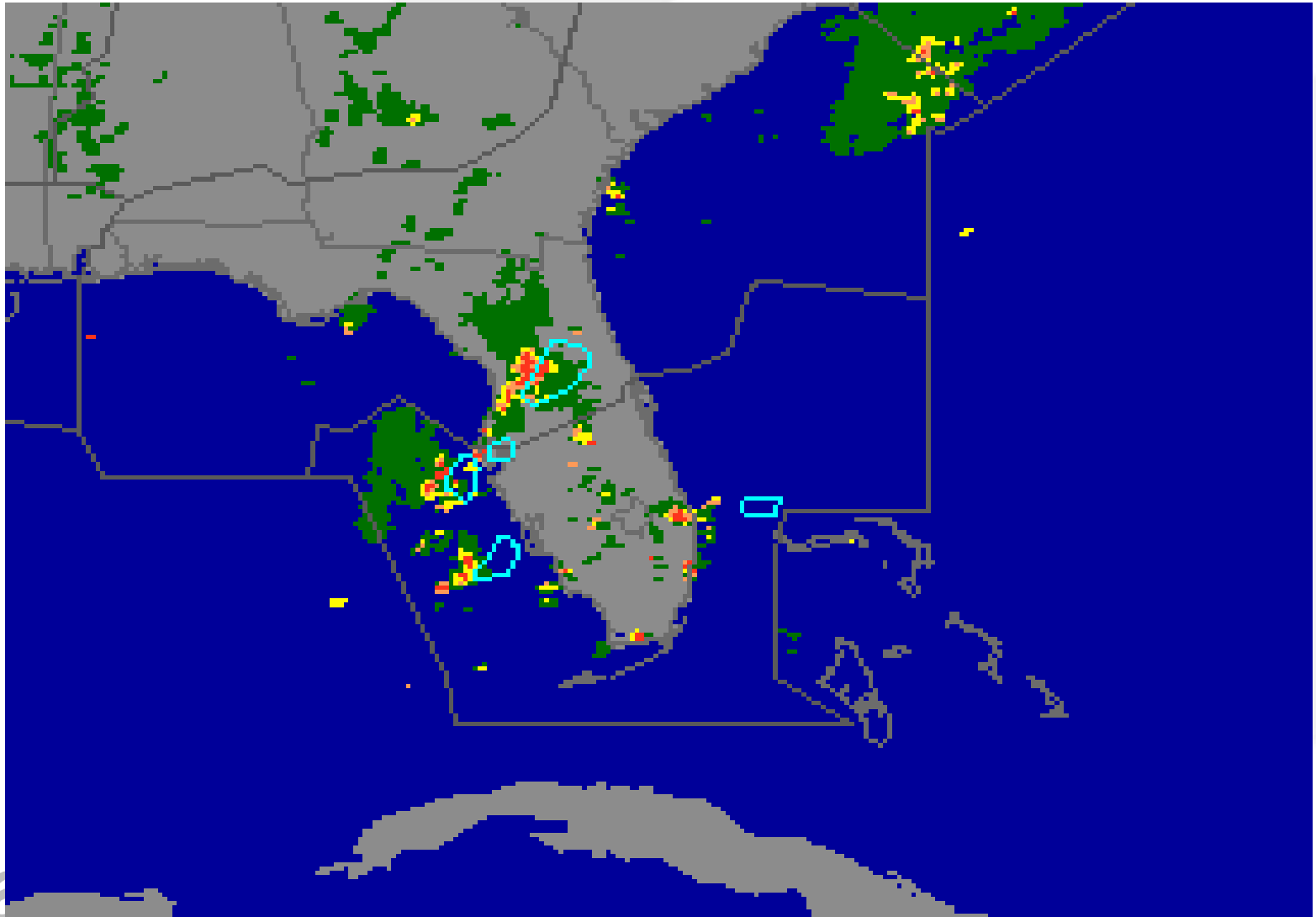
MDT

SVR

Extreme



NCWF



The Future.....



WSI. Weather When It Really Matters.





Commercial WX Providers:

- **A long history of successfully enhancing, tailoring, and quickly bringing new government aviation weather products to market, benefiting the overall aviation community.**