



# Adverse Condition Alerting & NextGen Briefings

FPAW Summer Session

GA Safety Panel

Mike Glasgow

July 22, 2014

# Awareness

## WPR11FA173

3 Fatalities

45 PIREPs

2 CWAs

## FAR Part 91 Section 103

Each pilot in command shall, before beginning a flight, become familiar with all available information concerning that flight. This information must include:

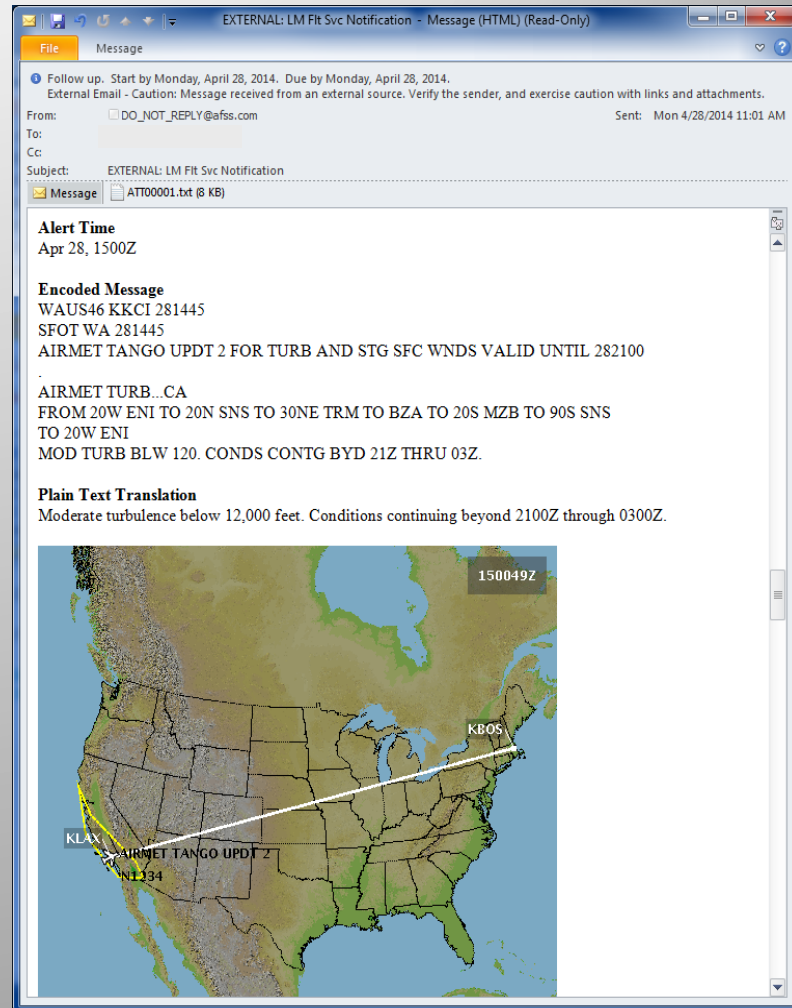
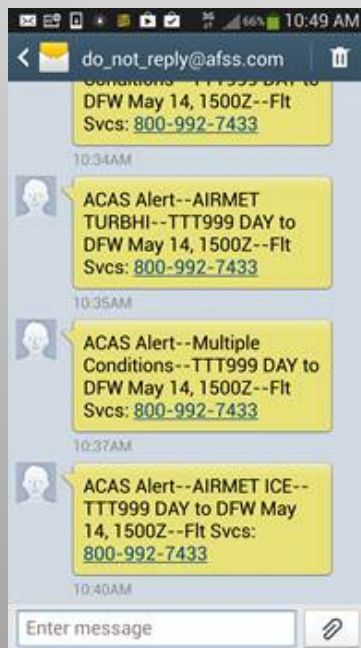
- (a) For a flight under IFR or a flight not in the vicinity of an airport, weather reports and forecasts...

## But...

Pull model for information is not optimal.

# Adverse Condition Alerting Service (ACAS)

- Free service, operational since October 2012
- Monitors flight plans after briefing/file, sends alerts to pilots for new or modified adverse conditions
  - TFRs, Closed/Unsafe Airports/Runways, SIGMETs Convective SIGMETs, AIRMETS, **CWAs**, **Urgent PIREPs**, Severe Wx Warnings & Watches
- Preflight delivery via Email, text msg, Honeywell Sky Connect, DeLorme, Garmin
- Inflight delivery via SATCOM devices: spidertracks, Garmin
- Full alert detail on website or by contacting LMFS



43% of surveyed pilots said there were adverse conditions they would not have know about without the ACAS

# Briefings

## Traditional Online Briefings

Voluminous

Archaic Presentation

Difficult to Assimilate

**Regulatory Compliance  $\neq$  Safety**

## NextGen Briefings

- Make briefings easier/faster to read and understand
- Using graphics, automatic summarization, smart plain text translation, filtering, automatic time analysis...
- Make self-service environment viable for larger number of pilots

# Typical METAR Data

METAR KAOO 082353Z AUTO 22017G27KT 10SM OVC085 14/09 A2993 RMK AO2  
PK WND 23031/2337 RAE43 SLP135 P0001 60013 T01440089 10167 20128  
58025

METAR KJST 082354Z AUTO 21016G25KT 6SM -RA BR FEW008 OVC012 11/09  
A2992 RMK AO2 PK WND 22029/2337 SLP134 P0001 60027 T01060094  
10122 20106 56021

SPECI KJST 090014Z AUTO 22016G26KT 6SM -RA BR BKN008 OVC013 10/09  
A2991 RMK AO2 PK WND 21026/0005 CIG 006V009 P0000

no reports available for HMZ

METAR KCBE 082355Z AUTO 16004KT 10SM SCT065 SCT100 16/10 A3000  
RMK AO1

METAR KCBE 090016Z AUTO 17004KT 10SM SCT090 16/10 A3000 RMK AO1

METAR K2G4 082355Z AUTO 21014G19KT 10SM BKN019 OVC024 10/08 A2999  
RMK AO1

METAR K2G4 090015Z AUTO 21016G26KT 10SM BKN019 OVC024 10/08 A2998  
RMK AO1

METAR KW99 082355Z AUTO 21008KT 10SM BKN080 BKN090 18/08 A3001 RMK  
AO2 T01840082 10227 20175

METAR KW99 090015Z AUTO 19006G17KT 10SM BKN080 BKN090 19/08 A3001  
RMK AO2 T01850082

METAR KW99 090035Z AUTO 20008G17KT 10SM BKN080 OVC100 18/08 A3000  
RMK AO2 T01820082

METAR KEKN 082351Z AUTO 16006KT 10SM BKN060 OVC090 13/09 A3004 RMK  
AO2 RAE43 SLP176 P0000 60002 T01280089 10194 20122 58013 TSNO

METAR KW22 082355Z AUTO 20012G19KT 10SM FEW055 13/10 A3002 RMK AO2

METAR KW22 090015Z AUTO 21012G23KT 10SM -RA FEW032 SCT042 BKN048  
13/09 A3002 RMK AO2

METAR KW22 090035Z AUTO 22013G21KT 5SM HZ BKN033 OVC041 13/10  
A3003 RMK AO2

# NGB METARs – Overview Page

Route brief for VFR TTT123 C130/C PIT 072000 045 ACY 0600 ALT1: MJX 50nm



Adverse Cond **Synopsis** **Current Wx** Forecasts NOTAMs Flow Control (0) Misc All

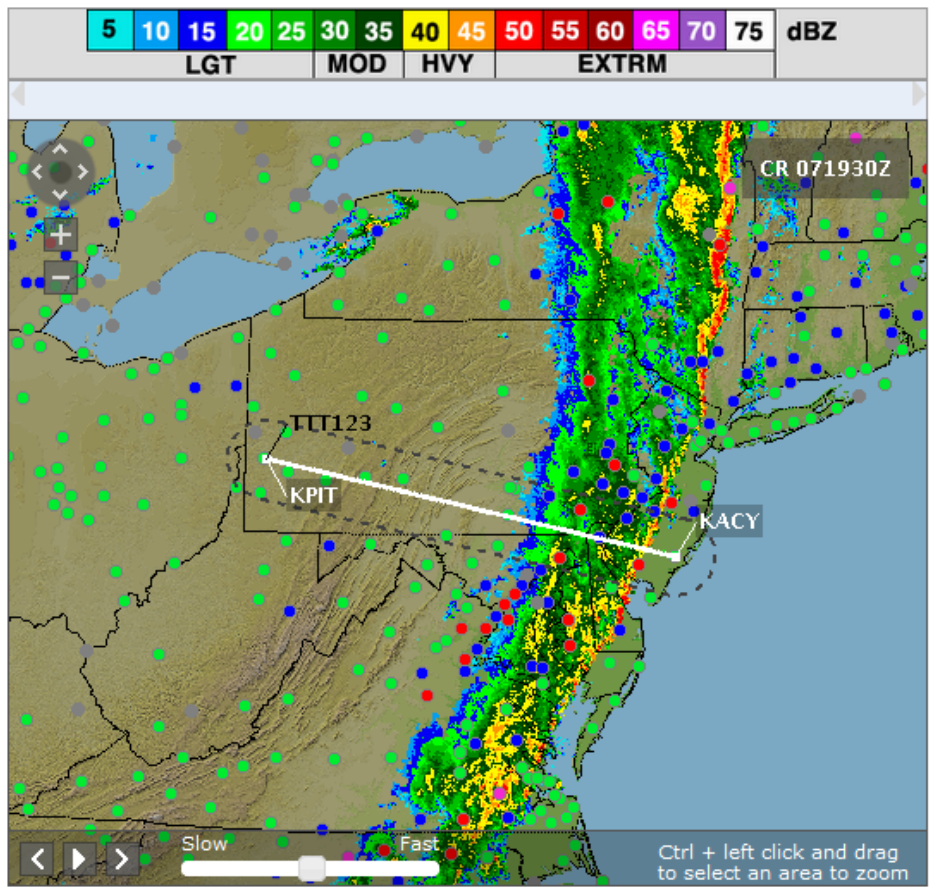
**METAR** PIREP

**STANDARD** **NEXTGEN**

Previous 1 of 6 Next

Automation Summarization - METARs  
 Use the Next Button to step through different sections of the METAR reports

- Departure:
- VFR KPIT 071851Z 27011G22KT 10SM BKN036 OVC050 15/06 A2991 RMK AO2 SLP132 BINOVCT01500061
- Route:
- UNKN KBVI METAR not available
  - VFR KAFJ 071915Z 26011G19KT 10SM FEW037 BKN060 14/05 A2996 RMK AO1
  - VFR KBTP 071915Z AUTO 24012G23KT 10SM SCT033 BKN041 OVC050 13/05 A2994 RMK AO1
  - VFR KAGC 071853Z 26013G21KT 10SM SCT040 BKN055 14/06 A2991 RMK AO2 SLP129 T01390056
  - VFR KLBE 071847Z 25013G17KT 10SM SCT041 BKN050 14/06 A2992
  - UNKN KIDI 071915Z AUTO 29011G18KT 10SM 13/07 A2992 RMK AO2
  - VFR KJST 071854Z AUTO 26013G26KT 10SM BKN039 BKN048 11/05 A2990 RMK AO2 PKWND 25026/1845 SLP122 T01060050
  - VFR KAOO 071853Z AUTO 27015G20KT 10SM BKN034 OVC048 14/08 A2989 RMK AO2 PKWND 27026/1811 SLP115 T01440083
  - VFR KHGR 071853Z 26005KT 10SM BKN060 17/13 A2988 RMK AO2 SLP123 T01670133
  - VFR KCXY 071856Z 29005KT 10SM -RA FEW033 BKN060 OVC080 16/14 A2987 RMK AO2 RAE24B41 SLP113 P0002 T01610144
  - VFR KDMW 071925Z AUTO 25004KT 10SM OVC043 15/13 A2990 RMK AO2
  - VFR SP KTHV 071909Z AUTO 24003KT 10SM FEW008 SCT019 OVC060 16/14 A2987 RMK AO2 RAE00 P0000
  - VFR KMDT 071856Z 31007KT 9SM -RA FEW011 SCT032 BKN055



All METAR/SPECI **Summarized METAR/SPECI** Wx Depiction

# NGB METARs – Origination Airport

Route brief for VFR TTT123 C130/C PIT 072000 045 ACY 0600 ALT1: MJX 50nm

Adverse Cond Synopsis **Current Wx** Forecasts NOTAMs Flow Control (0) Misc All

**METAR** PIREP

STANDARD **NEXTGEN**

Previous 2 of 6 Next

## Automation Summarization - METARs

Current conditions at Pittsburgh International, Pittsburgh, PA, VFR, Wind at 270 11 knots with gusts to 22 knots, 10 miles visibility, Ceiling is Broken at 3600 feet, Overcast at 5000 feet, Temperature 15°C, Dewpoint 6°C, Altimeter is 29.91

Remarks: AO2 SLP132 BINOVC01500061

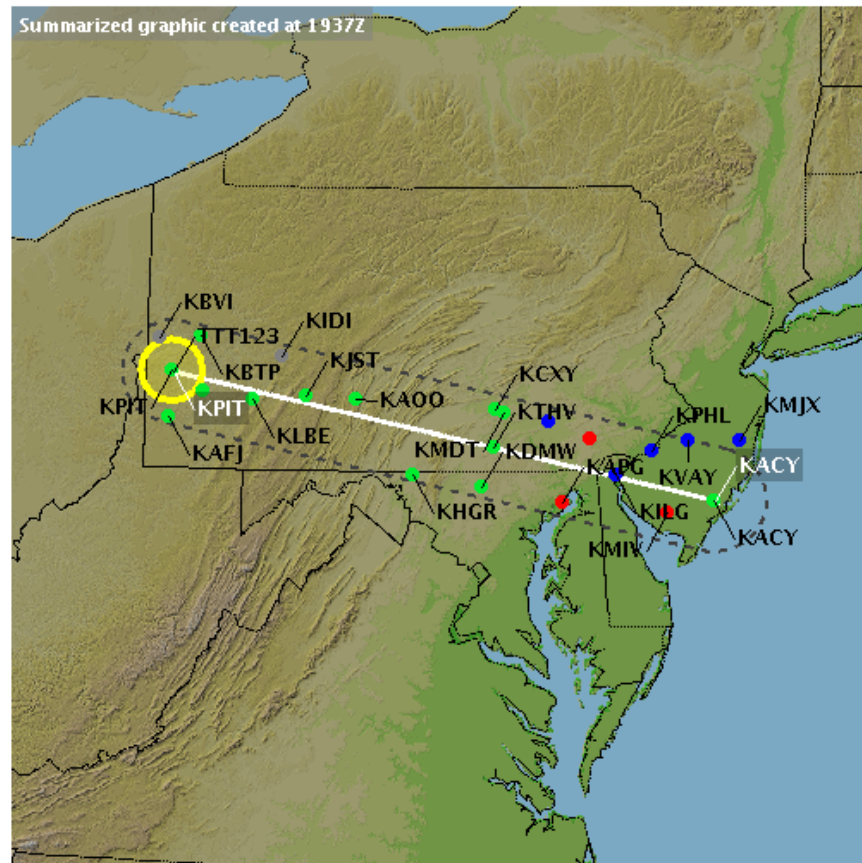
## Departure:

VFR KPIT 071851Z 27011G22KT 10SM BKN036 OVC050 15/06 A2991  
RMK AO2 SLP132 BINOVC01500061

## Route:

- ▶ UNKN KBVI METAR not available
- ▶ VFR KAFJ 071915Z 26011G19KT 10SM FEW037 BKN060 14/05 A2996  
RMK AO1
- ▶ VFR KBTP 071915Z AUTO 24012G23KT 10SM SCT033 BKN041 OVC050  
13/05 A2994 RMK AO1
- ▶ VFR KAGC 071853Z 26013G21KT 10SM SCT040 BKN055 14/06 A2991  
RMK AO2 SLP129 T01390056
- ▶ VFR KLBE 071847Z 25013G17KT 10SM SCT041 BKN050 14/06 A2992
- ▶ UNKN KIDI 071915Z AUTO 29011G18KT 10SM 13/07 A2992 RMK AO2
- ▶ VFR KJST 071854Z AUTO 26013G26KT 10SM BKN039 BKN048 11/05 A2990  
RMK AO2 PKWND 25026/1845 SLP122  
T01060050
- ▶ VFR KAOO 071853Z AUTO 27015G20KT 10SM BKN034 OVC048 14/08  
A2989 RMK AO2 PKWND 27026/1811 SLP115  
T01440083
- ▶ VFR KHGR 071853Z 26005KT 10SM BKN060 17/13 A2988 RMK AO2  
SLP123 T01670133
- ▶ VFR KCXY 071856Z 29005KT 10SM -RA FEW033 BKN060 OVC080  
16/14 A2987 RMK AO2 RAE24B41 SLP113 P0002  
T01610144
- ▶ VFR KDMW 071925Z AUTO 25004KT 10SM OVC043 15/13 A2990 RMK AO2
- ▶ VFR SP KTHV 071909Z AUTO 24003KT 10SM FEW008 SCT019 OVC060 16/14  
A2987 RMK AO2 RAE00 P0000

Summarized graphic created at 1937Z



All METAR/SPECI

Summarized  
METAR/SPECI

Wx Depiction

# NGB METARs – En Route Group

Route brief for VFR TTT123 C130/C PIT 072000 045 ACY 0600 ALT1: MJX 50nm



Adverse Cond Synopsis **Current Wx** Forecasts NOTAMs Flow Control (0) Misc All

**METAR** PIREP

STANDARD **NEXTGEN**

Previous 3 of 6 Next

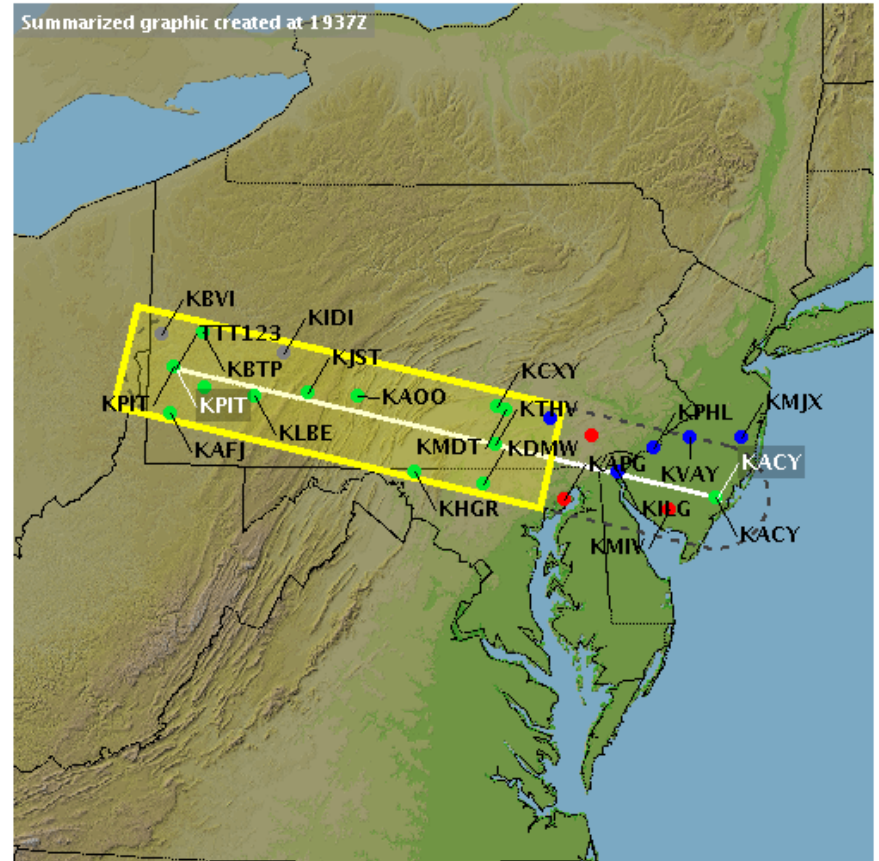
Automation Summarization - METARs

Mostly VFR with some MVFR through Lancaster, Lancaster, PA, with ceilings as low as 2000 feet, Widely Scattered Light Rain

Route:

UNKN	KBVI		METAR not available
VFR	KAFJ 071915Z		26011G19KT 10SM FEW037 BKN060 14/05 A2996 RMK AO1
VFR	KBTP 071915Z AUTO		24012G23KT 10SM SCT033 BKN041 OVC050 13/05 A2994 RMK AO1
VFR	KAGC 071853Z		26013G21KT 10SM SCT040 BKN055 14/06 A2991 RMK AO2 SLP129 T01390056
VFR	KLBE 071847Z		25013G17KT 10SM SCT041 BKN050 14/06 A2992
UNKN	KIDI 071915Z AUTO		29011G18KT 10SM 13/07 A2992 RMK AO2
VFR	KJST 071854Z AUTO		26013G26KT 10SM BKN039 BKN048 11/05 A2990 RMK AO2 PKWND 25026/1845 SLP122 T01060050
VFR	KAOO 071853Z AUTO		27015G20KT 10SM BKN034 OVC048 14/08 A2989 RMK AO2 PKWND 27026/1811 SLP115 T01440083
VFR	KHGR 071853Z		26005KT 10SM BKN060 17/13 A2988 RMK AO2 SLP123 T01670133
VFR	KCXY 071856Z		29005KT 10SM -RA FEW033 BKN060 OVC080 16/14 A2987 RMK AO2 RAE24B41 SLP113 P0002 T01610144
VFR	KDMW 071925Z AUTO		25004KT 10SM OVC043 15/13 A2990 RMK AO2
VFR	SP KTHV 071909Z AUTO		24003KT 10SM FEW008 SCT019 OVC060 16/14 A2987 RMK AO2 RAE00 P0000
VFR	KMDT 071856Z		31007KT 9SM -RA FEW011 SCT032 BKN055 OVC200 16/14 A2986 RMK AO2 SLP112 P0008 T01560139

Summarized graphic created at 1937Z



All METAR/SPECI **Summarized METAR/SPECI** Wx Depiction



# NGB METARs – En Route Group

Route brief for VFR TTT123 C130/C PIT 072000 045 ACY 0600 ALT1: MJX 50nm



Adverse Cond Synopsis **Current Wx** Forecasts NOTAMs Flow Control (0) Misc All

**METAR** PIREP

STANDARD **NEXTGEN**

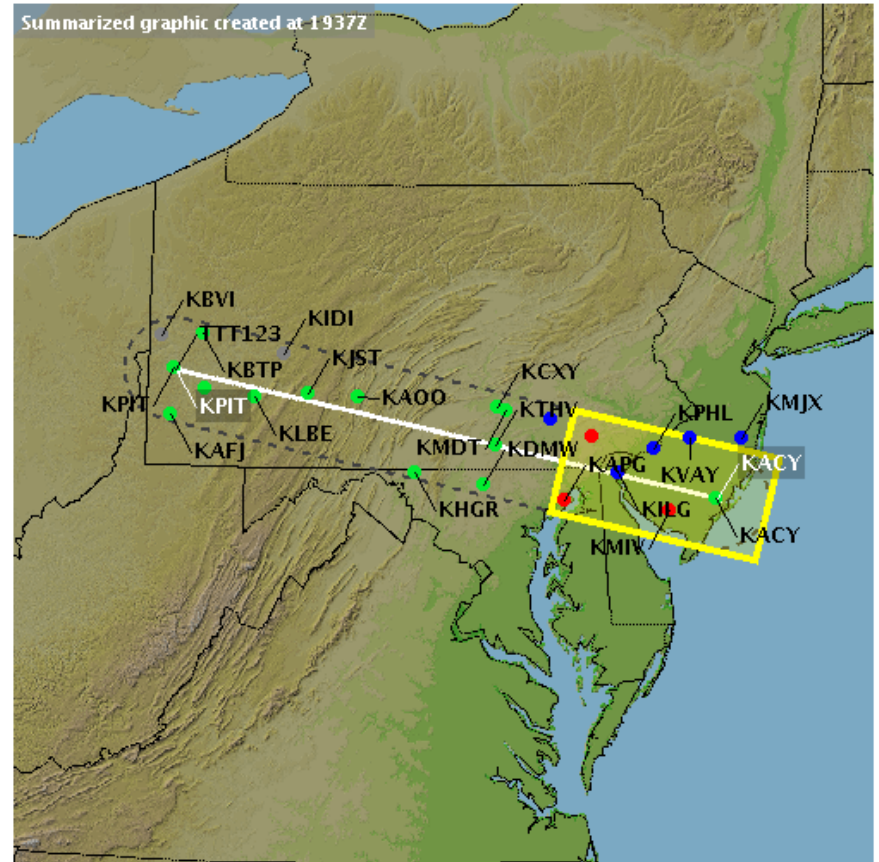
Previous 4 of 6 Next

Automation Summarization - METARs

**IFR** and **MVFR** through South Jersey Rgnl, Mount Holly, NJ, with ceilings as low as **600 feet**, Widespread Heavy Rain and Mist, visibility as low as **1 miles**

- ▶ **VFR** KDMW 071925Z AUTO 25004KT 10SM OVC043 15/13 A2990 RMK AO2
  - ▶ **VFR** SP KTHV 071909Z AUTO 24003KT 10SM FEW008 SCT019 OVC060 16/14 A2987 RMK AO2 RAE00 P0000
  - ▶ **VFR** KMDT 071856Z 31007KT 9SM -RA FEW011 SCT032 BKN055 OVC200 16/14 A2986 RMK AO2 SLP112 P0008 T01560139
  - ▶ **MVFR** SP KLNS 071925Z 30010KT 10SM -RA FEW010 BKN020 OVC060 15/13 A2988 RMK AO2 P0004
  - ▶ **IFR** KAPG 071855Z 19012KT 3SM -RA BR BKN006 OVC009 18/18 A2986
  - ▶ **IFR** KMQS 071935Z AUTO 29009KT 3SM RA FEW003 BKN009 OVC028 17/16 A2987 RMK AO2 P0017
  - ▶ **MVFR** KILG 071851Z 21011KT 5SM RA BR FEW055 BKN080 OVC100 19/18 A2984 RMK AO2 SLP106 P0022 T01940178
  - ▶ **MVFR** SP KPHL 071930Z 22013KT 5SM RA BR FEW005 BKN050 OVC080 20/18 A2985 RMK AO2 P0010
  - ▶ **IFR** SP KMIV 071929Z AUTO 25013G22KT 230V300 1SM +RA BR FEW009 BKN027 OVC047 19/18 A2988 RMK AO2 PKWND 27027/1907 WSHFT1856 RAB25 P0018
  - ▶ **MVFR** SP KVAJ 071919Z AUTO VRB05G15KT 3SM RA BR FEW024 BKN041 OVC065 20/18 A2984 RMK AO2 PKWND 27030/1857 RAB1858 P0020 TSNO
- Destination:
- ▶ **VFR** KACY 071854Z 19018G28KT 10SM FEW018 BKN070 24/20 A2985 RMK AO2 PKWND 20032/1841 SLP108 T02440200
- Alternate 1:
- ▶ **MVFR** KMJX 071915Z AUTO 19017G27KT 10SM SCT024 BKN030 OVC070 26/21 A2983 RMK AO1

Summarized graphic created at 1937Z



All METAR/SPECI Summarized METAR/SPECI Wx Depiction

# NGB METARs – Destination

Route brief for VFR TTT123 C130/C PIT 072000 045 ACY 0600 ALT1: MJX 50nm



Adverse Cond **Synopsis** **Current Wx** Forecasts NOTAMs Flow Control (0) Misc All

**METAR** PIREP

STANDARD **NEXTGEN**

Previous 5 of 6 Next

Automation Summarization - METARs

Current conditions at Atlantic City International, Atlantic City, NJ, VFR, Wind at 190 18 knots with gusts to 28 knots, 10 miles visibility, Few clouds at 1800 feet, Ceiling is Broken at 7000 feet, Temperature 24°C, Dewpoint 20°C, Altimeter is 29.85

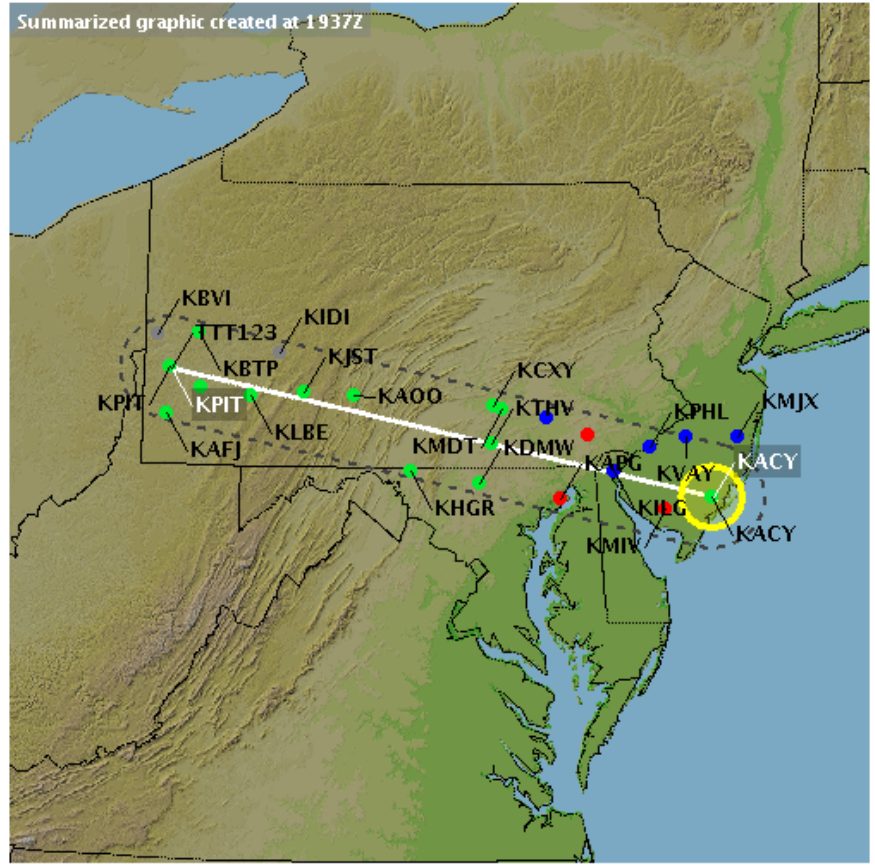
Remarks: AO2 PKWND 20032/1841 SLP108 T02440200

- ▶ VFR KDMW 071925Z AUTO 25004KT 10SM OVC043 15/13 A2990 RMK AO2
- ▶ VFR SP KTHV 071909Z AUTO 24003KT 10SM FEW008 SCT019 OVC060 16/14 A2987 RMK AO2 RAE00 P0000
- ▶ VFR KMDT 071856Z 31007KT 9SM -RA FEW011 SCT032 BKN055 OVC200 16/14 A2986 RMK AO2 SLP112 P0008 T01560139
- ▶ MVFR SP KLNS 071925Z 30010KT 10SM -RA FEW010 BKN020 OVC060 15/13 A2988 RMK AO2 P0004
- ▶ IFR KAPG 071855Z 19012KT 3SM -RA BR BKN006 OVC009 18/18 A2986
- ▶ IFR KMQS 071935Z AUTO 29009KT 3SM RA FEW003 BKN009 OVC028 17/16 A2987 RMK AO2 P0017
- ▶ MVFR KILG 071851Z 21011KT 5SM RA BR FEW055 BKN080 OVC100 19/18 A2984 RMK AO2 SLP106 P0022 T01940178
- ▶ MVFR SP KPHL 071930Z 22013KT 5SM RA BR FEW005 BKN050 OVC080 20/18 A2985 RMK AO2 P0010
- ▶ IFR SP KMIV 071929Z AUTO 25013G22KT 230V300 1SM +RA BR FEW009 BKN027 OVC047 19/18 A2988 RMK AO2 PKWND 27027/1907 WSHFT1856 RAB25 P0018
- ▶ MVFR SP KVAJ 071919Z AUTO VRB05G15KT 3SM RA BR FEW024 BKN041 OVC065 20/18 A2984 RMK AO2 PKWND 27030/1857 RAB1858 P0020 TSNO

Destination: **VFR** KACY 071854Z 19018G28KT 10SM FEW018 BKN070 24/20 A2985 RMK AO2 PKWND 20032/1841 SLP108 T02440200

Alternate 1: **MVFR** KMIX 071915Z AUTO 19017G27KT 10SM SCT024 BKN030 OVC070

Summarized graphic created at 1937Z



All METAR/SPECI **Summarized METAR/SPECI** Wx Depiction

# Typical TAF Data

TAF AMD KAOO 090024Z 0900/0924 22017G27KT P6SM OVC090  
WS020/23040KT  
FM090200 27015G25KT 5SM -SHRA BR OVC015  
FM090500 30010G15KT P6SM SCT025  
FM091400 29015G25KT P6SM BKN035

TAF AMD KJST 090024Z 0900/0924 22016G26KT 6SM -RA BR BKN008 OVC013  
FM090400 29015G25KT P6SM BKN015  
FM090700 28010KT P6SM SCT025  
FM091500 28015G25KT P6SM BKN025

TAF KEKN 082334Z 0900/0924 18005KT 6SM -SHRA SCT025 OVC040 TEMPO  
0906/0909 VRB10G22KT 4SM -SHRA SCT015 BKN035  
FM090900 32010KT 4SM -SHRA BR SCT008 OVC015  
FM091400 28007KT P6SM BKN035  
FM091700 28012G18KT P6SM SCT250

# NGB TAF Presentation

Route brief for VFR TTT123 C130/C AGC 071820 045 ACY 0600 50nm



Adverse Cond **Synopsis** Current Wx **Forecasts** NOTAMs Flow Control (0) Misc All

Area Forecast **Terminal Forecast** Winds Aloft

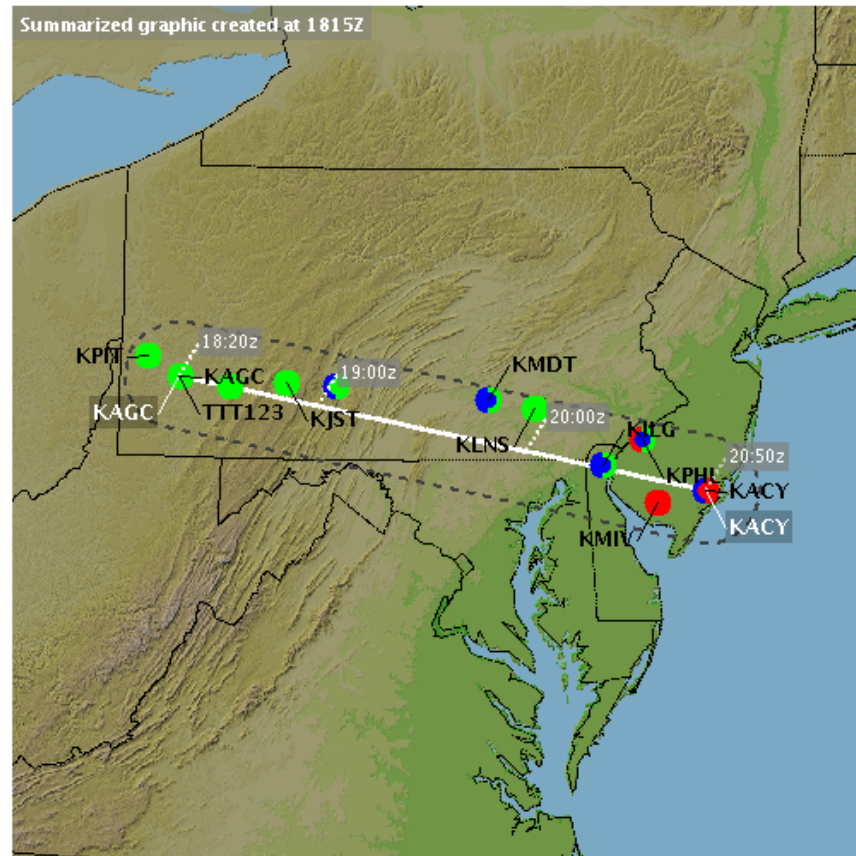
STANDARD **NEXTGEN**

## Automation Summarization - TAFs

Your projected flight time and filed speed have been used to identify the most relevant TAF forecast information for your flight. These times do not include adjusted wind speed.

20:00z	VFR	FM072000 28013G22KT P6SM SCT023 BKN040
	VFR	FM080000 29010KT P6SM SCT060 =
20:20z	VFR	TAF <b>KILG</b> 071724Z 0718/0818 20018G28KT 6SM -SHRA SCT020 OVC050
	MVFR	TEMPO 0718/0721 <b>3SM</b> +SHRA BR <b>OVC020</b>
+40min →	VFR	FM072100 24010KT P6SM -SHRA OVC040
	VFR	FM072300 28010KT P6SM BKN060
	VFR	FM080200 32008KT P6SM SCT060
	VFR	FM080300 33005KT P6SM SKC
	VFR	FM081400 35006KT P6SM SKC =
20:30z	MVFR	TAF <b>KPHL</b> 071724Z 0718/0824 22015G25KT <b>5SM</b> -SHRA BR <b>BKN025</b> OVC040
-30min →	IFR	TEMPO 0718/0720 <b>2SM</b> +SHRA BR OVC010
+30min →	VFR	FM072100 24010KT P6SM -SHRA OVC040
	VFR	FM072300 28010KT P6SM BKN060
	VFR	FM080200 32008KT P6SM SCT060
	VFR	FM080300 33005KT P6SM SKC
	VFR	FM081400 35006KT P6SM SKC =
20:40z	VFR	TAF <b>KMIV</b> 071724Z 0718/0818 18012G20KT P6SM VCSH SCT020 OVC040
	IFR	TEMPO 0719/0722 <b>2SM</b> +SHRA BR <b>OVC012</b>
	VFR	FM072200 24010KT P6SM -SHRA OVC040
	VFR	FM080000 28010KT P6SM BKN060
	VFR	FM080200 33005KT P6SM SCT060
	VFR	FM081400 01006KT P6SM SKC =
20:50z	MVFR	TAF <b>KACY</b> 071724Z 0718/0818 19015G25KT P6SM VCSH <b>BKN015</b> OVC030
	IFR	TEMPO 0720/0723 <b>2SM</b> +SHRA BR <b>OVC012</b>
	VFR	FM072300 24010KT P6SM -SHRA OVC040
	VFR	FM080100 29010KT P6SM BKN060
	VFR	FM080300 33006KT P6SM SCT060
	VFR	FM081400 02010KT P6SM SKC =

Summarized graphic created at 1815Z



All TAFs

TAF + METAR/SPECI

**Summarized TAFs**

# Typical AIRMET, CWA

WAUS42 KKCI 102045

MIAS WA 102045

AIRMET SIERRA UPDT 3 FOR IFR AND MTN OBSCN VALID UNTIL 110300

.

OTLK VALID 0300-0900Z

AREA 1...IFR NC SC GA NY NJ PA OH WV MD DC DE VA AND CSTL WTRS  
BOUNDED BY 40SSW SYR-20ESE CYN-30ESE SBY-40ENE ECG-20E ILM-30NNW  
IRQ-40SSE MCN-50S LGC-20N ODF-20NNW HNV-20NNW HNN-20N EWC-ERI-  
30SSW BUF-40SSW SYR

CIG BLW 010/VIS BLW 3SM BR. CONDS CONTG THRU 09Z.

WAUS41 KKCI 102045

BOSS WA 102045

AIRMET SIERRA UPDT 3 FOR IFR AND MTN OBSCN VALID UNTIL 110300

ZNY1 CWA 102225

ZNY CWA 103 VALID UNTIL 110000

FROM 15NE SAX-30E SAX-25SW JFK-10S ETX-15NE SAX

AREA OF TS WITH HVY PCPN MOV FROM 27010KT. TOPS FL320. TS WL IMPACT  
N90 W GATE DEPARTURES AND APPRCH TEB-EWR 2300Z-0000Z.

GS

# NGB AIRMET

Standard brief for VFR TTT123 C172/A KGAI 102330 95 KHFD 0300 50nm



**Adverse Cond** Synopsis Current Wx Forecasts NOTAMS Flow Control Misc All

TFR DD NOTAM Conv SIG SIGMET (0) **AIRMET** UUA (0) CWA Severe Weather (0)

IFR MTN Obsc (0) Icing (0) Turb Low (0) Turb High (0) Wnds>30 Kts (0) LLWS (0) Other (0)

**STANDARD** NEXTGEN

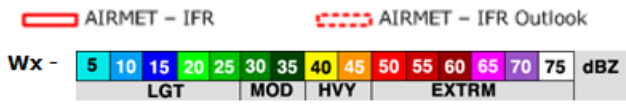
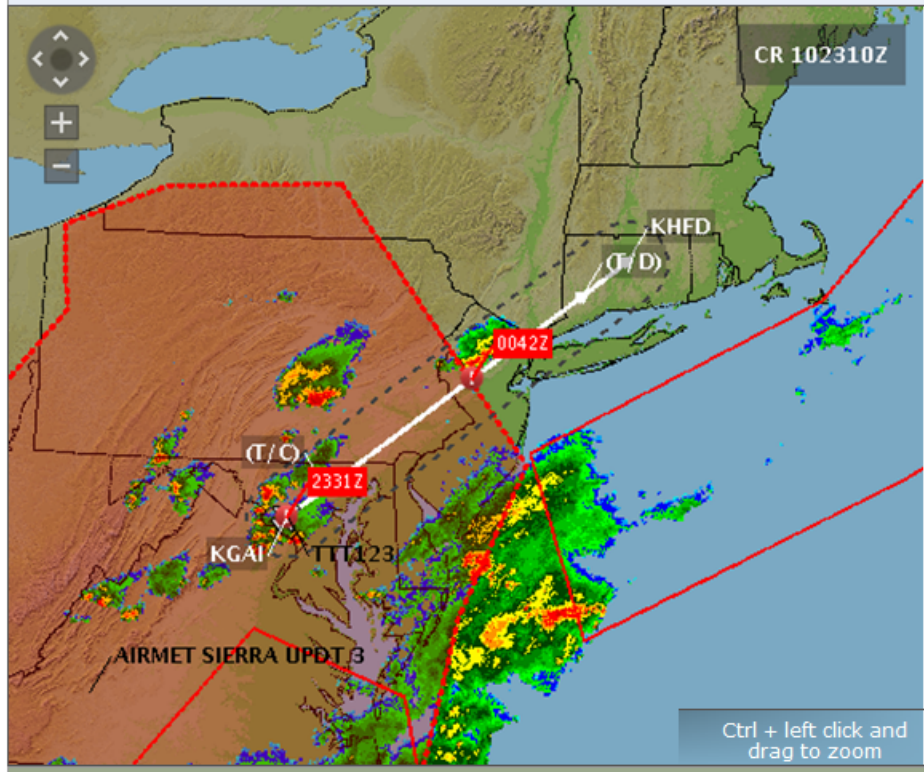
Previous 1 of 2 Next

**AIRMET OUTLOOK Valid 1407110300-1407110900Z**  
Ceiling below 1,000 feet/visibility below 3 statute miles mist. Conditions continuing through 0900Z.  
Outlook AIRMET active times: Start:Jul 10, 2045Z End:Not Defined  
Estimated passing times: **Earliest:Jul 10, 2331Z** **Latest:Jul 11, 0042Z**  
! Outlook AIRMET is active during estimated passing time. [What's this?](#)

WAUS42 KPCI 102045  
MIAS WA 102045  
AIRMET SIERRA UPDT 3 FOR IFR AND MTN OBSCN VALID UNTIL 110300  
OTLK VALID 0300-0900Z  
AREA 1...IFR NC SC GA NY NJ PA OH WV MD DC DE VA AND CSTL WTRS  
BOUNDED BY 40SSW SYR-20ESE CYN-30ESE SBY-40ENE ECG-20E ILM-30NNW  
IRQ-40SSE MCN-50S LGC-20N ODF-20NNW HMV-20NNW HNN-20N EWC-ERI-  
30SSW BUF-40SSW SYR  
CIG BLW 010/VIS BLW 3SM BR. CONDS CONTG THRU 09Z.

WAUS41 KPCI 102045  
BOSS WA 102045  
AIRMET SIERRA UPDT 3 FOR IFR AND MTN OBSCN VALID UNTIL 110300  
OTLK VALID 0300-0900Z  
AREA 1...IFR NY NJ PA OH WV MD DC DE VA NC SC GA AND CSTL WTRS  
BOUNDED BY 40SSW SYR-20ESE CYN-30ESE SBY-40ENE ECG-20E ILM-30NNW  
IRQ-40SSE MCN-50S LGC-20N ODF-20NNW HMV-20NNW HNN-20N EWC-ERI-  
30SSW BUF-40SSW SYR  
CIG BLW 010/VIS BLW 3SM BR. CONDS CONTG THRU 09Z.

AIRMET - IFR on Terrain & Color Map



# NGB CWA

Standard brief for VFR TTT123 C172/A KGAI 102330 95 KHFD 0300 50nm



**Adverse Cond** | Synopsis | Current Wx | Forecasts | NOTAMs | Flow Control | Misc | All

TFR | DD NOTAM | Conv SIG | SIGMET (0) | AIRMET | UUA (0) | **CWA** | Severe Weather (0)

STANDARD | **NEXTGEN** | Previous | 1 of 1 | Next

## CWA 103 Valid Until 110000

Area of thunderstorms with heavy precipitation moving from 270° at 10 knots. Tops at flight level 320. Thunderstorms will impact N90 west gate departures and APPRCH Teterboro, Teterboro, NJ (TEB)-Newark Liberty International, Newark, NJ (EWR) 2300Z to 0000Z. Small hail and snow pellet

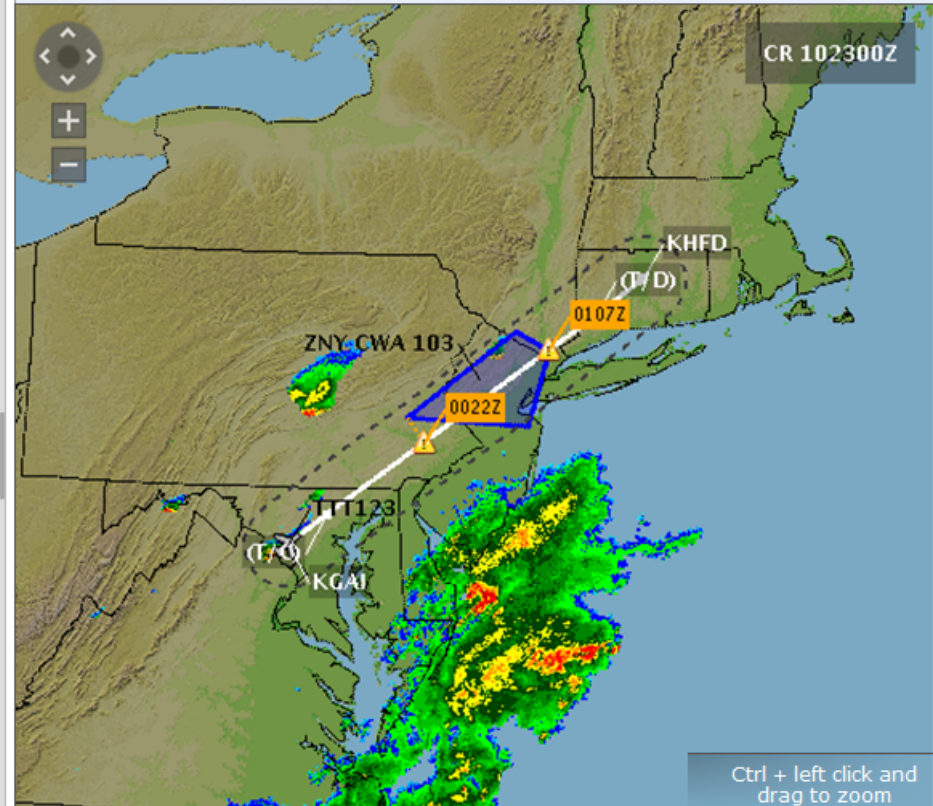
Center Advisory active times:      Start: Jul 10, 2225Z      End: Jul 11, 0000Z  
Estimated passing times:            **Earliest: Jul 11, 0022Z**      **Latest: Jul 11, 0107Z**

Center Advisory is active 22 minutes prior to estimated passing time.

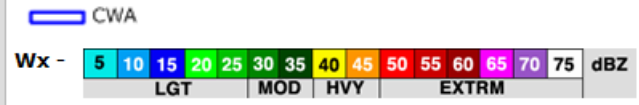
[What's this?](#)

ZNY1 CWA 102225  
ZNY CWA 103 VALID UNTIL 110000  
FROM 15NE SAX-30E SAX-25SW JFK-10S ETX-15NE SAX  
AREA OF TS WITH HVY PCPN MOV FROM 27010KT. TOPS FL320. TS WL IMPACT  
N90 W GATE DEPARTURES AND APPRCH TEB-EWR 2300Z-0000Z.  
GS

Center Weather Advisories on | Terrain & Color Map



Animate Wx | Configure Map | Supplemental Wx



# Typical Obstruction NOTAMs

!ISP 03/014 ZNY OBST NMRS OBSTN LGT MONITORING SYSTEMS OTS DUE TO SOLAR FLARE ACTIVITY. CTN ADVISED IN VCNTY OF LGTD OBSTN AS LGTS MAY BE OTS AND NOT REPORTED.

!CLE 03/129 ZOB OBST NMRS OBSTN LGT MONITORING SYSTEMS OTS DUE TO SOLAR FLARE ACTIVITY CTN ADVISED IN VCNTY OF LGTD OBSTN AS LGTS MAY BE OTS AND NOT REPORTED

!DCA 03/093 ZDC OBST NMRS OBST LGT MONITORING SYSTEMS OTS DUE TO SOLAR FLARE ACTIVITY. CTN ADVISED IN VCNTY OF LGTD OBST AS LGTS MAY BE OTS AND NOT REPORTED WEF 1203081803

!HUF 03/144 ZID OBST NMRS OBST LGT MONITORING SYSTEMS OTS DUE TO SOLAR FLARE ACTIVITY. CTN ADVISED IN VCNTY OF LGTD OBST AS LGTS MAY BE OTS AND NOT REPORTED WEF 1203081813

!AOO 10/158 PSB OBST TOWER 2859 (350 AGL) 15 SW LGTS OTS (ASR UNKN) WEF 1110261240

!AOO 03/027 9G8 OBST TOWER 2355 (238 AGL) 3.42 NE LGTS OTS (ASR 1254487) TIL 1203211955

!AOO 03/008 9G8 OBST TOWER 2349 (259 AGL) 7.60 NNE LGTS OTS (ASR 1207120) TIL 1203172344

!AOO 03/010 9G8 OBST TOWER 2333 (258 AGL) 4.39 NW LGTS OTS (ASR 1253069) TIL 1203180944

!AOO 03/005 9G8 OBST TOWER 2520 (203 AGL) 2.95 S LGTS OTS (ASR 1062663) TIL 1203161755

!JST 02/084 JST OBST TOWER 2873 (334 AGL) 7 E LGTS OTS (ASR UNKN) WEF 1202292305-1203152305

!JST 08/029 JST OBST TOWER UNKN (80 AGL) SE CORNER OF MILITARY RAMP LGTS OTS

!AOO 02/136 2G9 OBST TOWER 3092 (390 AGL) 10.08 NNW LGTS OTS (ASR 1032552) TIL 1203110505

!AOO 03/001 2G9 OBST TOWER 2852 (258 AGL) 6.65 ENE LGTS OTS (ASR 1231330) TIL 1203160115

!AOO 07/105 2G9 OBST TOWER 2388 (210 AGL) 4.66 SW LGTS OTS (ASR 1026434) TIL 1207300157

!AOO 07/106 2G9 OBST TOWER 2388 (210 AGL) 4.64 SW LGTS OTS (ASR 1026435) TIL 1207300158

!EKN 03/038 CBE OBST TOWER 2171 (299 AGL) 8.40 NE LGTS OTS (ASR 1011507) TIL 1203220631

!EKN 03/031 CBE OBST 2857 (262 AGL) 10.25 NW (3945N07853) WEF 1203051919-1203201919



# Obstruction NOTAMs - Unfiltered

Route brief for VFR NGOC1 J3/N BCB 070445 025 RDU 0123 50nm

Select the Printer icon for an Outlook Briefing



Adverse Cond  Synopsis (0)  Current Wx  Forecasts  NOTAMs OLD  **NOTAMs**  Flow Control (0)  Misc  All

Departure (0)  Destination  **En Route**  Gen FDC  Intl (0)  Uncategorized (0)  All

NAV  COM  SVC  **OBST**  AIRSPACE  SUA (0)  RWY/TWY/APRON/AD/FDC  Other/Unverified (0)  Mil (0)

Exclude obstructions beyond 1000ft of filed altitude

### Automation Summarization - Obstructions

Total number of Obstruction NOTAMs: 24

- MSL unknown: 1
- Within 500ft: 6
- Within 1000ft: 2
- Beyond 1000ft: 15

IPSK 14/02011 KPSK OBST TOWER LGT (ASR 1032197) 371449.00N0805120.00W (10.6NM NW PSK) **4327FT** (248FT AGL) OUT OF SERVICE 1402240749-1403110749

IROA 14/02171 KROA OBST TOWER LGT (ASR 1032663) 371137.40N0800925.00W (11.9NM SW ROA) **3969FT** (210FT AGL) OUT OF SERVICE 1402280746-1403150746

IRDU 14/02328 K8N0 OBST TOWER LGT (ASR 1258117) 362843.10N0794742.50W (2.8NM WSW 8N0) **998FT** (400FT AGL) OUT OF SERVICE 1402251139-1403121139

ISIF 14/02006 KSIF OBST TOWER LGT (ASR 1253888) 362754.80N0795527.60W (3.9NM WNW SIF) **1046FT** (260FT AGL) OUT OF SERVICE 1402192339-1403062339

ISIF 14/02007 KSIF OBST TOWER LGT (ASR 1007580) 362048.00N0795429.00W (6.2NM SSW SIF) **1734FT** (1040FT AGL) OUT OF SERVICE 1402211601-1403081601

IRDU 14/03005 K6A5 OBST TOWER LGT (ASR 1214850) 361246.30N0793552.00W (8.5NM SE 6A5) **1030FT** (308FT AGL) OUT OF SERVICE 1403011842-1403161842

IDAN 13/12014 K DAN OBST POLE UNKNOWN (.5NM NW APCH END RWY 13) **UNKNOWN** (80FT AGL) 1312101929-1403311500EST

IRDU 14/02282 K6W4 OBST TOWER LGT (ASR 1253620) 362601.90N0792029.90W (3.2NM NE 6W4) **1063FT** (485FT AGL) OUT OF SERVICE 1402211710-1403081710

IRDU 14/02331 K6W4 OBST TOWER LGT (ASR 1004907) 362551.50N0791916.70W (4.0NM ENE 6W4) **1017FT** (420FT AGL) OUT OF SERVICE 1402251502-1403121502

IGX 14/02013 KIGX OBST TOWER LGT (ASR 1002990) 360333.30N0785710.20W (9.4NM NE IGX) **933FT** (483FT AGL) OUT OF SERVICE 1402250710-1403120710

IGX 14/02014 KIGX OBST TOWER LGT (ASR 1005060) 355221.00N0790927.00W (5.9NM SW IGX) **1542FT** (836FT AGL) OUT OF SERVICE 1402260703-1403130703

IGX 14/02015 KIGX OBST TOWER LGT (ASR 1048276) 355617.00N0790135.00W (1.9NM E IGX) **478FT** (203FT AGL) OUT OF SERVICE 1402270210-1403140210

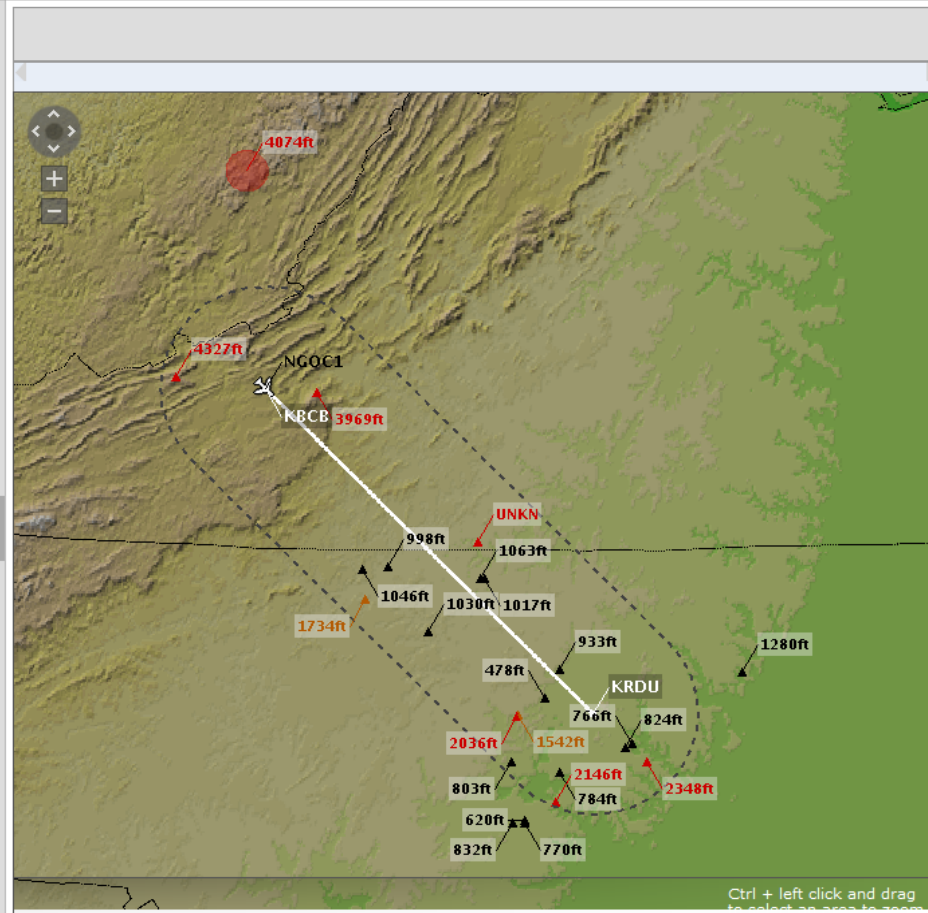
IGX 14/03001 KIGX OBST TOWER LGT (ASR 1014574) 355159.00N0791000.50W (6.5NM SW IGX) **2036FT** (1294FT AGL) OUT OF SERVICE 14030112252-1403162252

ITTA 14/02017 KTTA OBST TOWER LGT (ASR 1003505) 352532.80N0790737.90W (9.6NM S TTA) **770FT** (390FT AGL) OUT OF SERVICE 1402210431-1403080431

ITTA 14/02018 KTTA OBST TOWER LGT (ASR 1257539) 352548.70N0791110.00W (10.2NM SSW TTA) **832FT** (415FT AGL) OUT OF SERVICE 1402211711-1403081711

ITTA 14/02019 KTTA OBST TOWER LGT (ASR 1006630) 354041.00N0791118.70W (7.1NM NW TTA) **803FT** (270FT AGL) OUT OF SERVICE 1402212107-1403082107

ITTA 14/02024 KTTA OBST TOWER LGT (ASR 1238110) 353043.90N0785839.80W (7.3NM SE TTA) **2146FT** (1747FT AGL) OUT OF SERVICE 1402260510-1403130310



Obstruction (MSL) proximity to filed altitude

- ▲ Within 500ft
- Within 1000ft
- ▲ Beyond 1000ft

▲ Point ● Area

Ctrl + left click and drag to select an area to zoom

# Obstruction NOTAMs - Filtered

Route brief for VFR NGOC1 J3/N BCB 070445 025 RDU 0123 50nm

Select the Printer icon for an Outlook Briefing



Adverse Cond  Synopsis (0)  Current Wx  Forecasts  NOTAMs OLD  **NOTAMs**  Flow Control (0)  Misc  All

Departure (0)  Destination  **En Route**  Gen FDC  Intl (0)  Uncategorized (0)  All

NAV  COM  SVC  **OBST**  AIRSPACE  SUA (0)  RWY/TWY/APRON/AD/FDC  Other/Unverified (0)  Mil (0)

Exclude obstructions beyond 1000ft of filed altitude

### Automation Summarization - Obstructions

Total number of Obstruction NOTAMs: 24

- MSL unknown: 1
- Within 500ft: 6
- Within 1000ft: 2
- Beyond 1000ft: 15

IPSK 14/02011 KPSK OBST TOWER LGT (ASR 1032197) 371449.00N0805120.00W (10.6NM NW PSK) **4327FT** (248FT AGL) OUT OF SERVICE 1402240749-1403110749

IROA 14/02171 KROA OBST TOWER LGT (ASR 1032663) 371137.40N0800925.00W (11.9NM SW ROA) **3969FT** (210FT AGL) OUT OF SERVICE 1402280746-1403150746

ISIF 14/02007 KSIF OBST TOWER LGT (ASR 1007580) 362048.00N0795429.00W (6.2NM SSW SIF) **1734FT** (1040FT AGL) OUT OF SERVICE 1402211601-1403081601

IDAN 13/12014 K DAN OBST POLE UNKNOWN (.5NM NW APCH END RWY 13) **UNKNOWN** (80FT AGL) 1312101929-1403311500EST

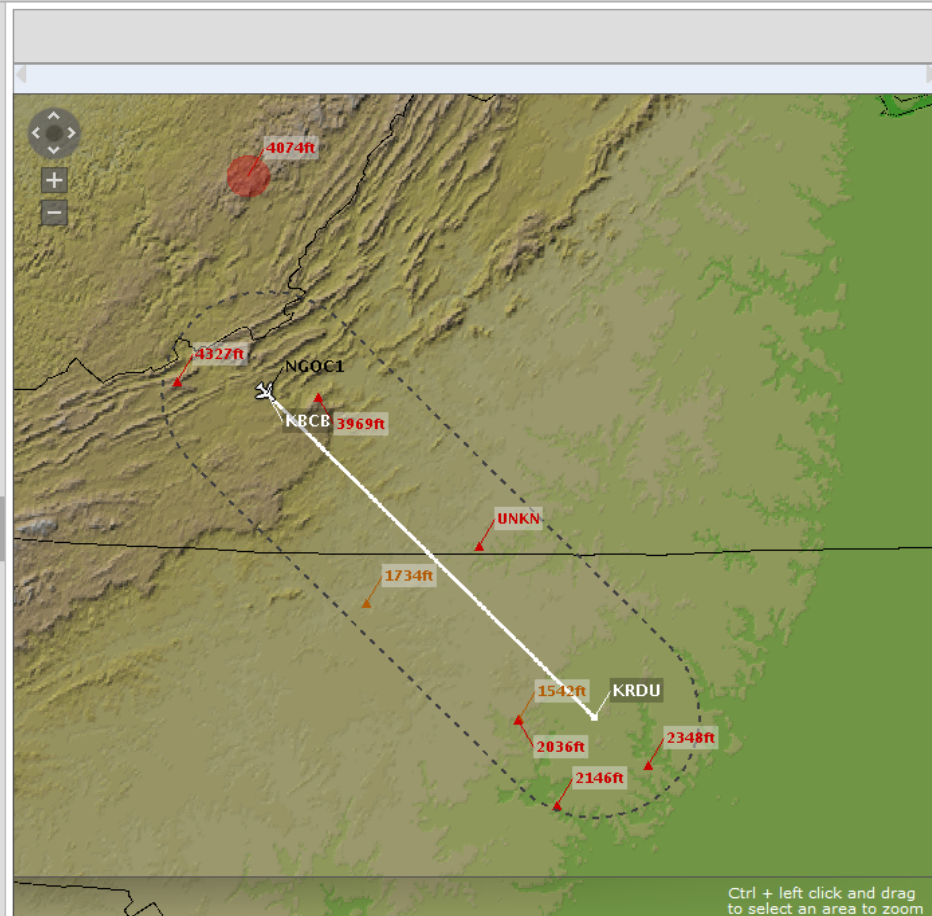
IGX 14/02014 KIGX OBST TOWER LGT (ASR 1005060) 355221.00N0790927.00W (5.9NM SW IGX) **1542FT** (836FT AGL) OUT OF SERVICE 1402260703-1403130703

IGX 14/03001 KIGX OBST TOWER LGT (ASR 1014574) 355159.00N0791000.50W (6.5NM SW IGX) **2036FT** (1294FT AGL) OUT OF SERVICE 1403012252-1403162252

ITTA 14/02024 KTTA OBST TOWER LGT (ASR 1238110) 353043.90N0785839.80W (7.3NM SE TTA) **2146FT** (1747FT AGL) OUT OF SERVICE 1402260510-1403130310

IRDU 14/02360 KW17 OBST TOWER LGT (ASR 1027322) 354029.00N0783139.00W (8.7NM SSW W17) **2348FT** (1988FT AGL) OUT OF SERVICE 1402281539-1403151539

IDCA 14/02163 KZDC OBST WIND TURBINE FARM WITHIN AREA DEFINED AS 5NM RADIUS OF 380549N0803047W (10.13 S 314) **4074FT** (386FT AGL) NOT LGTD 1402102106-1403102100EST



Ctrl + left click and drag to select an area to zoom

Obstruction (MSL) proximity to filed altitude

▲	●	▲	●	▲	●
Within 500ft	Within 1000ft	Beyond 1000ft			

▲ Point ● Area

# Nav NOTAMs Unfiltered

Departure	Destination	En Route	Gen FDC	Intl (0)	Uncategorized			
<b>NAV</b>	COM	SVC	OBST	AIRSPACE	SUA (0)	RWY/TWY/APRON/AD/FDC	Other/Unverified	Mil
<input checked="" type="checkbox"/> VOR	<input checked="" type="checkbox"/> VOR-DME	<input checked="" type="checkbox"/> VORTAC	<input checked="" type="checkbox"/> NDB					
<input checked="" type="checkbox"/> DME	<input checked="" type="checkbox"/> TACAN	<input checked="" type="checkbox"/> ILS	<input checked="" type="checkbox"/> Other					

IHRJ 13/03002 KHRJ NAV HQT NDB UNMONITORED
IFAY 13/07027 KFAY NAV VOR GROUND RECEIVER CHECKPOINT <b>OTS</b>
IFAY 14/03029 KFAY NAV ILS RWY 4 GP <b>OUT OF SERVICE</b> 1403202130-1404032000EST
IMEB 09/06002 KMEB NAV RWY 5 ILS LLZ/GP UNMNT
ILBT 08/09004 KLBT NAV VOR <b>OTS</b>
ILBT 13/04005 KLBT NAV ILS RWY 5 LLZ UNMONITORED WEF 1304031734
IAND 12/08392 KCKI NAV NDB UNMONITORED
IAND 14/03339 KCKI NAV NDB <b>OUT OF SERVICE</b> 1403252346-1404252000EST
IAND 14/03307 VAN NAV TACAN AZM <b>OUT OF SERVICE</b> 1403241255-1404042000EST
IAND 13/12201 KRBW NAV ILS RWY 23 DME <b>UNUSABLE</b> BEYOND 18 DEG RIGHT OF COURSE 1312201557-1412201555EST
IBQK 13/08004 KBQK NAV JEFFI NDB/ILS RWY 7 LO DECOMMISSIONED WEF 1308091413
IBQK 14/03040 KBQK NAV ILS RWY 7 LOC/GP <b>OUT OF SERVICE</b> 1403281300-1403281800
IGNV 13/04250 K28J NAV PALATKA NDB <b>OTS</b> WEF 1304221801
IOCF 08/08019 KOCF NAV TACAN AZM 329-359 <b>UNUSBL</b>
IOCF 08/08020 KOCF NAV TACAN AZM 025-078 <b>UNUSBL</b> WEF 0808182135
IPIE 13/04159 KZPH NAV RHZ NDB <b>OTS</b> WEF 1304191621
IVDF 11/05012 KVDF NAV RWY 23 ILS LLZ/GP UNMNT 0330-0930 DLY WEF 1105230930
IVDF 14/03016 KVDF NAV ILS RWY 23 LOC <b>OUT OF SERVICE</b> 1403251050-1404302000EST
IVDF 14/03017 KVDF NAV ILS RWY 23 GP/DME <b>OUT OF SERVICE</b> 1403251057-1404302000EST
ITPA 11/02056 KTPA NAV RWY 1R ILS LLZ <b>UNUSBL</b> BYD 15 DEG L OF CRS
ITPA 11/02057 KTPA NAV RWY 19L ILS LLZ <b>UNUSBL</b> BYD 25 DEG L OF CRS
ITPA 14/02088 KTPA NAV VOT <b>OUT OF SERVICE</b> 1402211526-1406252000EST
IPIE 14/03062 KPIE NAV ILS RWY 36R UNMONITORED DAILY 0500-1200 1403090500-1404091200EST
IPIE 14/03063 KPIE NAV ILS RWY 18L UNMONITORED DAILY 0500-1200 1403090500-1404091200EST
ISRQ 12/06088 KSRQ NAV TACAN AZM <b>OTS</b> WEF 1206201606
IMIA 12/03075 KPHK NAV TACAN AZM <b>OTS</b>
IFLL 13/05027 KFLL NAV ILS RWY 10R LLZ/OM <b>OTS</b> WEF 1305021525
ITMB 13/02038 KTMB NAV ILS RWY 9R OM <b>OTS</b> WEF 1302251616



VOR  
  DME  
  VOR-DME  
  TACAN  
  VORTAC  
  ILS  
  NDB  
  Other

NOTAM Condition:  
 ● Out of Service  
 ● Unusable  
 ● Standard

# Nav NOTAMs Filtered

Departure Destination **En Route** Gen FDC Intl (0) Uncategorized

**NAV** COM SVC OBST AIRSPACE SUA (0) RWY/TWY/APRON/AD/FDC Other/Unverified Mil

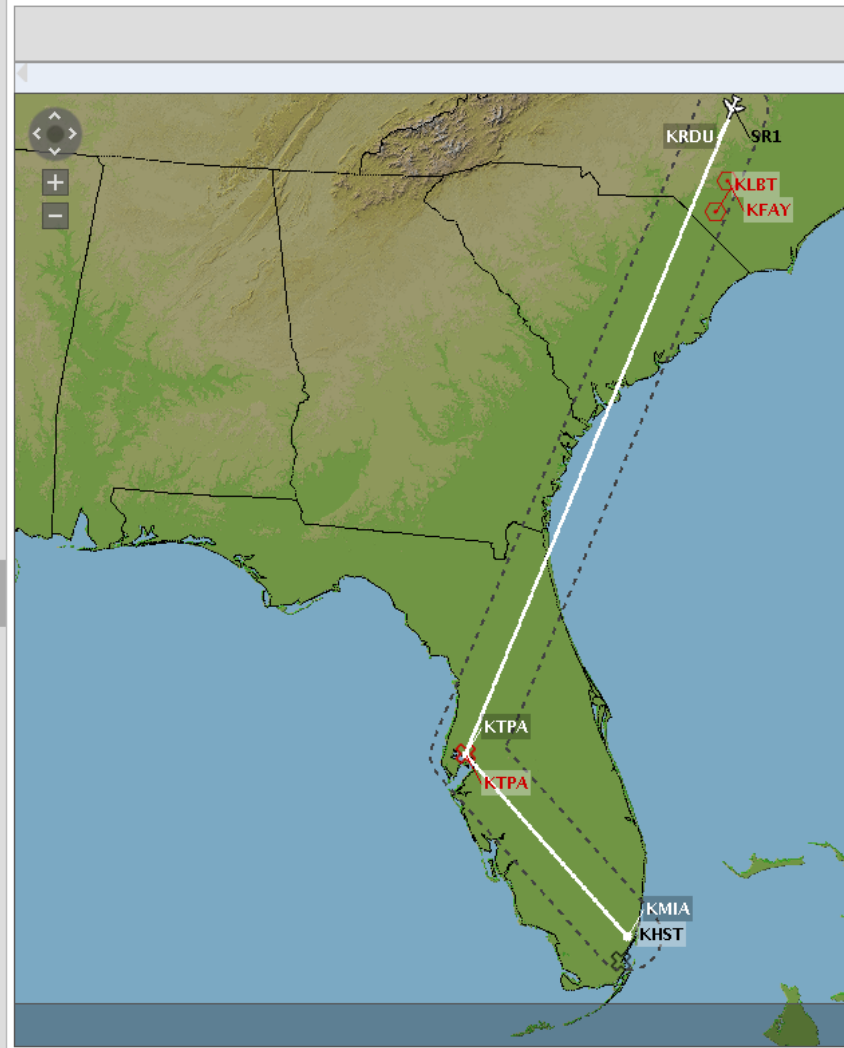
- |   |   |  |   |
|---|---|--|---|
| <input checked="" type="checkbox"/> VOR | <input checked="" type="checkbox"/> VOR-DME | <input checked="" type="checkbox"/> VORTAC | <input type="checkbox"/> NDB              |
| <input checked="" type="checkbox"/> DME | <input type="checkbox"/> TACAN              | <input type="checkbox"/> ILS               | <input checked="" type="checkbox"/> Other |

!FAY 13/07027 KFAY NAV VOR GROUND RECEIVER CHECKPOINT **OTS**

!LBT 08/09004 KLBT NAV VOR **OTS**

!TPA 14/02088 KTPA NAV VOT **OUT OF SERVICE** 1402211526-1406252000EST

!HST 14/08001 KHST NAV HST TEST



- VOR  DME  VOR-DME  TACAN  VORTAC  ILS  NDB  Other

NOTAM Condition: ● Out of Service ● Unusable ● Standard

