



Federal Aviation
Administration

Aviation Weather Programs

Friends and Partners of Aviation
Weather, Vision Forum 2010

Jaime Figueroa

July 21, 2010



Objectives for NextGen Network Enabled Weather (NNEW) and Reduce Weather Impact (RWI)

**Joint Planning and
Development Office**

**Concept of Operations
for the
Next Generation Air
Transportation
System**

Version 2.0
13 June 2007

NEXTGEN
Next Generation Air Transportation System

***Network-Enabled
Information Access***

***Weather Assimilated
into Decision-Making***
-- 4-D Trajectory Operations

***Improve Quality of
Weather Information***

Key Programs

- **NextGen Network Enabled Weather (NNEW)**
- **Reduce Weather Impact (RWI)**
- **Aviation Weather Research Program (AWRP)**
- **System Wide Information Management (SWIM)**
- **Other NextGen Solution Sets**
 - e.g. Collaborative ATM



NNEW

- **FAA's IT tool suite for aviation weather information dissemination**
 - Information provided from NWS' NextGen 4-D Weather Data Cube
 - Tailored information provided by value added services
 - Dissemination of Weather Translations
- **Makes available FAA weather products including FAA observations to NWS**

RWI

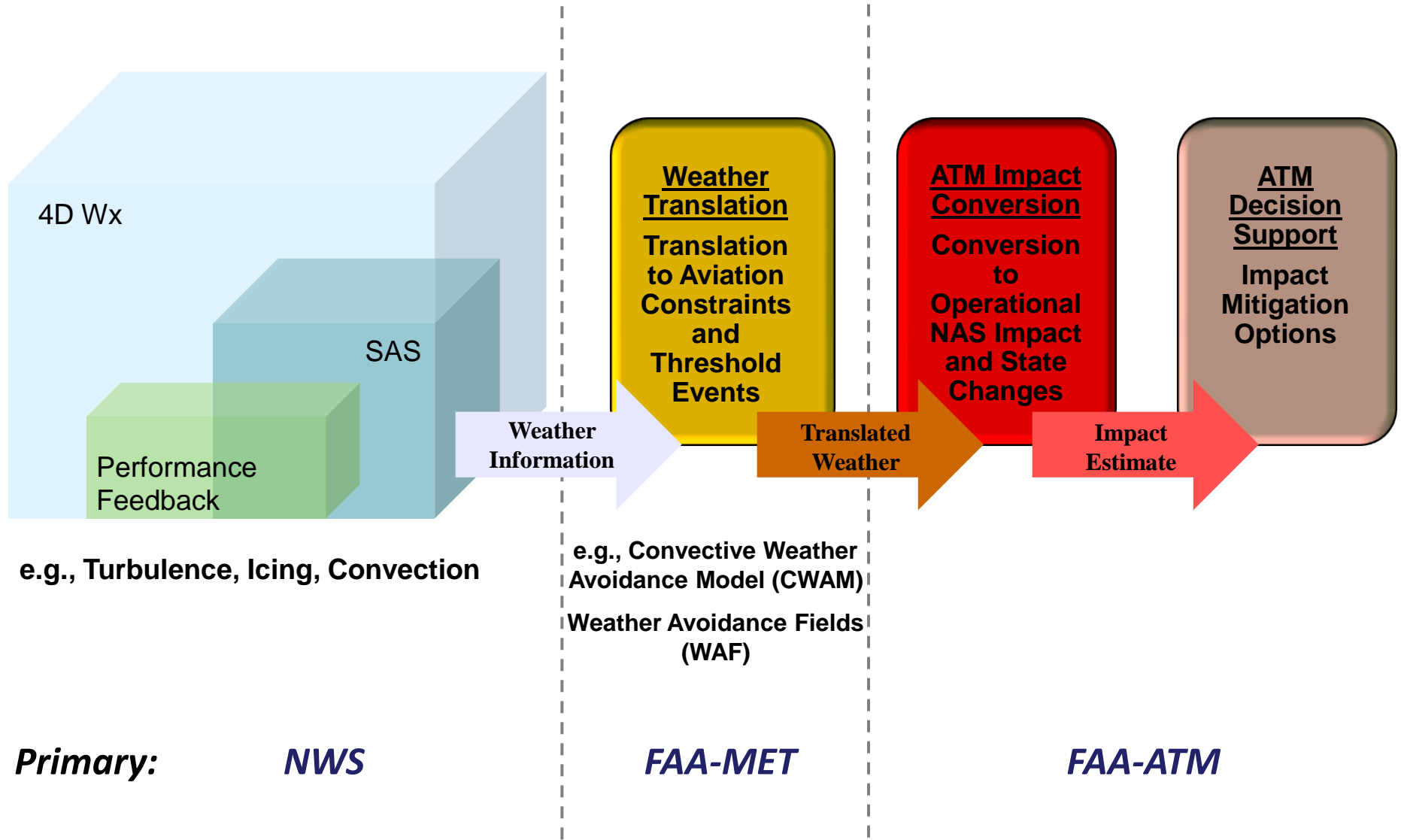
- **Pre-Investment Solution Set portfolio to develop:**
 - Improved Observations
 - Improved Forecasts
 - Translated weather information into NAS constraint and impact information for integration into DSTs

Aviation Weather Research Program

- **Research Portfolio aimed at improving state of the science for detection and forecast of aviation-relevant weather**
- **Current research thrusts:**
 - Convection
 - Turbulence
 - Ceiling and Visibility
 - Icing (Ground and Airborne)
 - Modeling
 - Observations

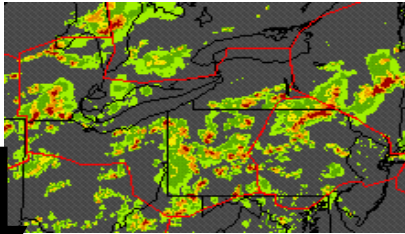


NextGen Weather Integration Concept

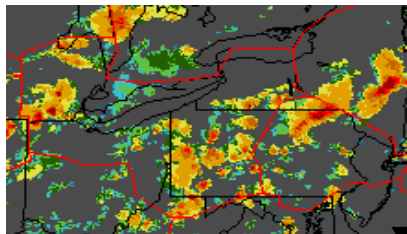


Translating Weather to Impacts

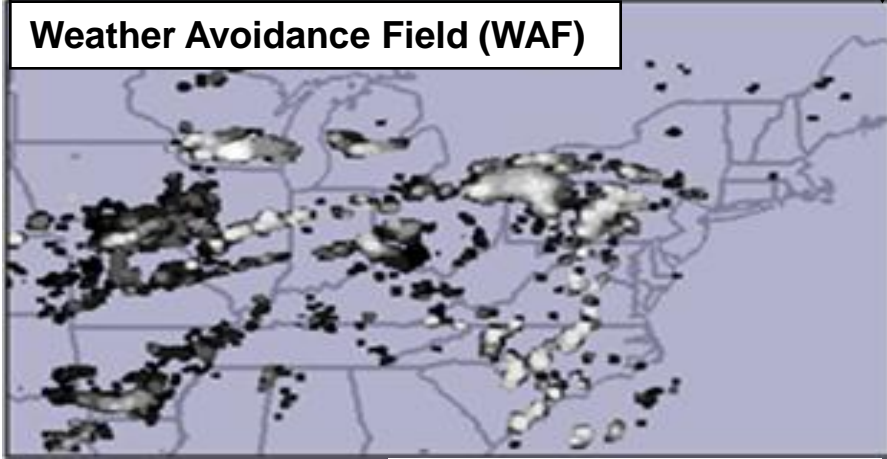
Precipitation



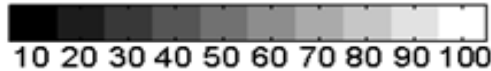
Echo Tops



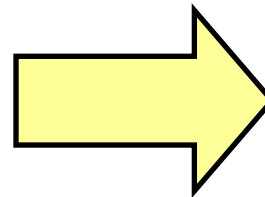
Weather Avoidance Field (WAF)



Pilot Deviation Prob

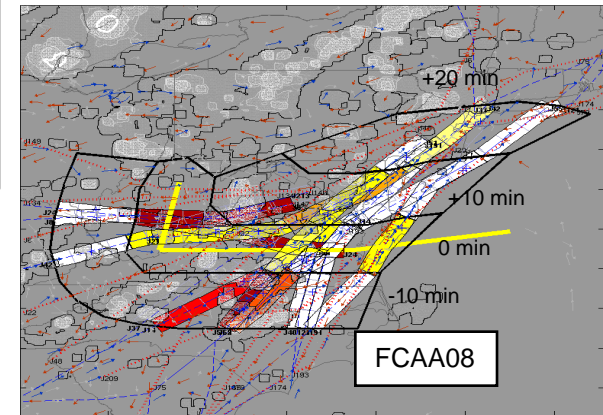
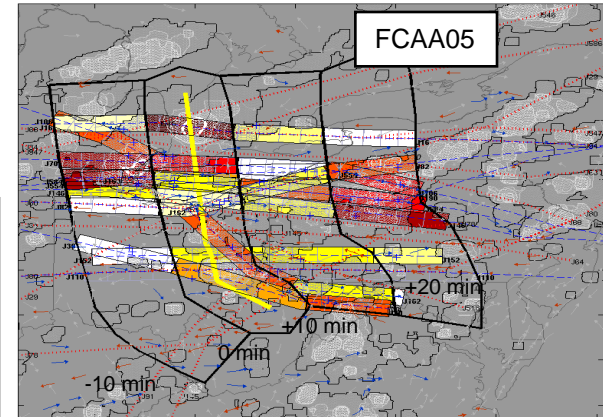


Weather Translation Techniques



Estimated Airspace Availability

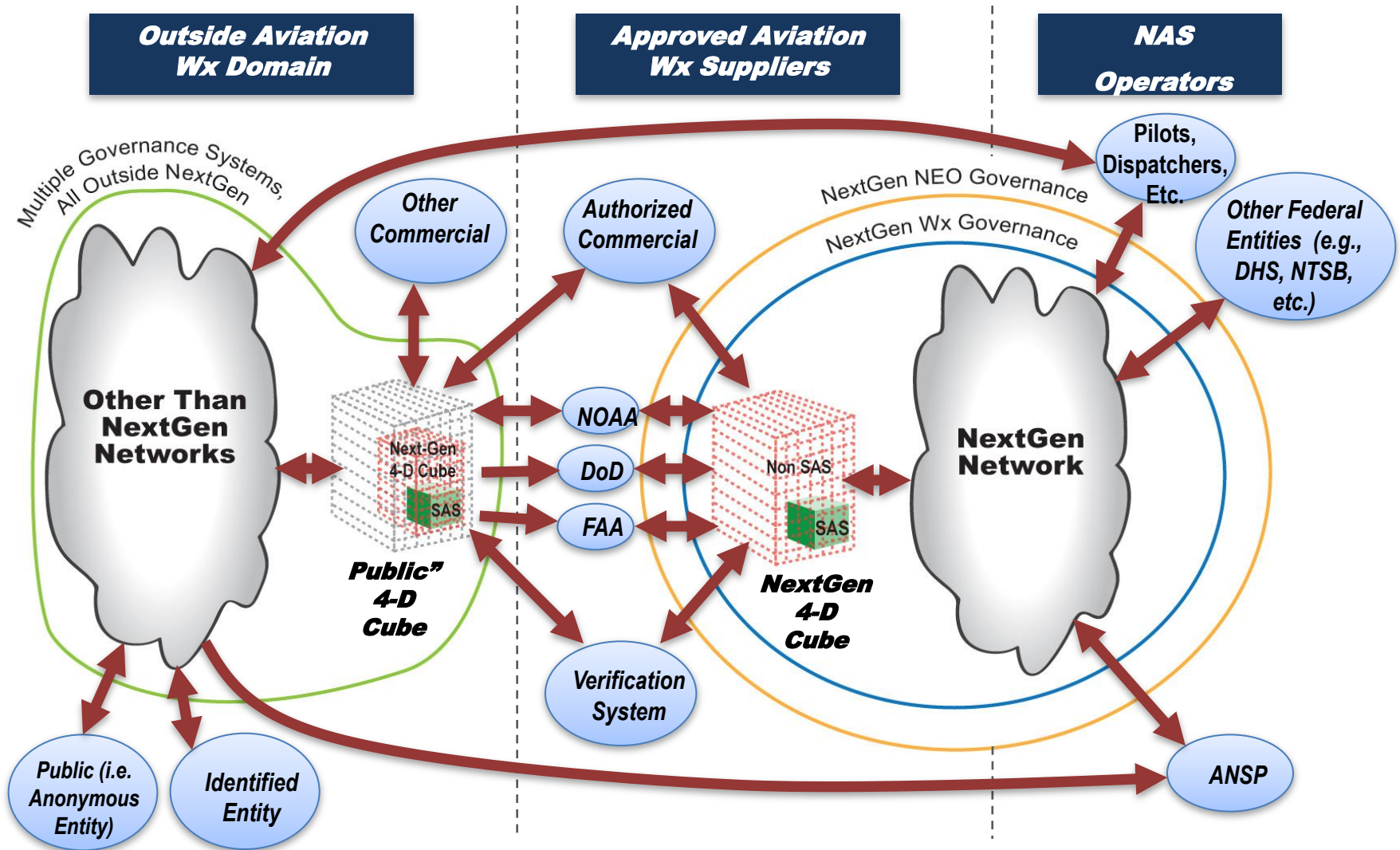
FCAA05 2007/06/27_19:00Z



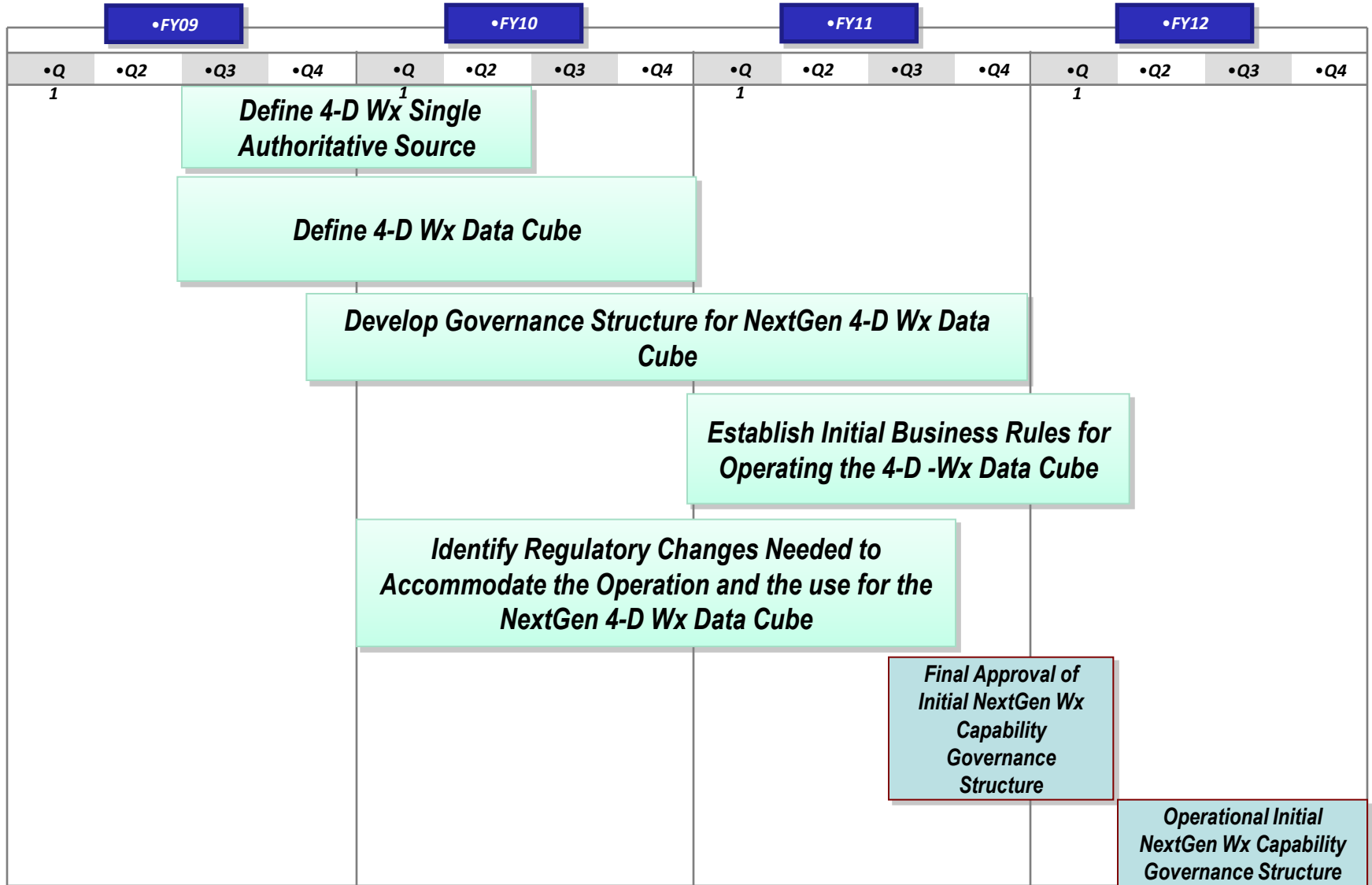
Integration Evolution

- **Near-Term – Route/Volume Data Extractor for utilization in DSTs.**
 - **Mid-Term – Translations integrated into DSTs.**
 - New datasets will translate weather information into operational thresholds or NAS constraints.
 - **Far-Term – Fully automated translations including advanced weather data.**
- * Translations in use to support ATC decision making will be available to external users (e.g., FOC, Flight Deck) to allow for common situational awareness*

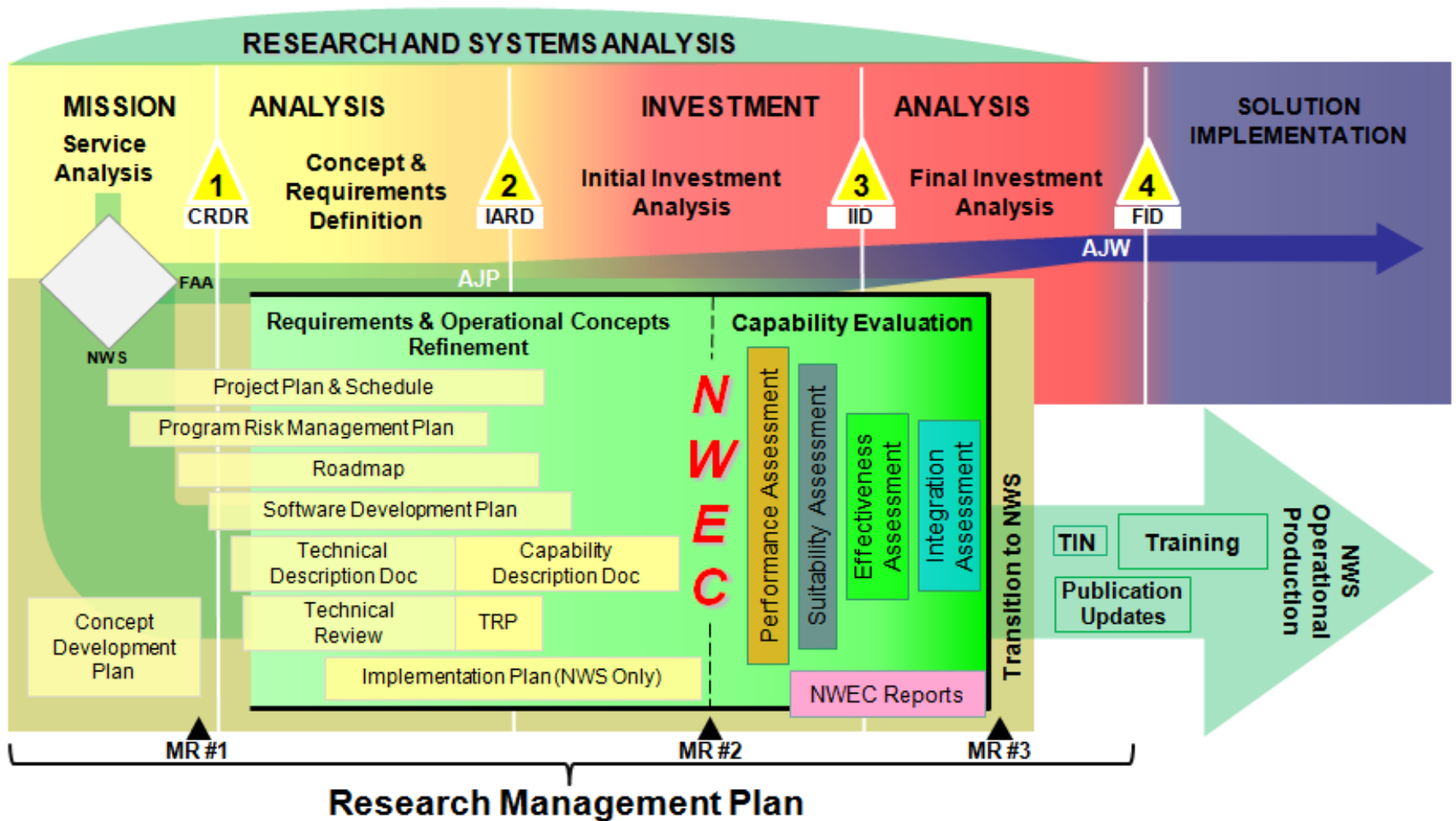
JPDO Policy Team Architecture Concept



High-Level JPDO Policy Team Work Plan



The RTO Process



ATO SMS: OSA

PHA SRMD



Current and Near-Term Activities

- **NNEW 4-D Wx Data Cube**
 - FAA/NWS NNEW Capability Evaluation, Sep 2010
- **Processing and Integration Demonstrations**
 - In-situ Turbulence Demonstration, Ongoing
 - Advanced Convective Forecast Evaluation, Jun-Sep 2010
 - Wx into TBFM - NextGen Integrated Airport Evaluation, 2011
- **Plans and Requirements**
 - ATM Weather Integration Plan v2.0, Sep 2010
 - Observation Rightsizing Analysis Report, Dec 2010
 - Liquid Water Equivalent Initial Requirements, July 2010