

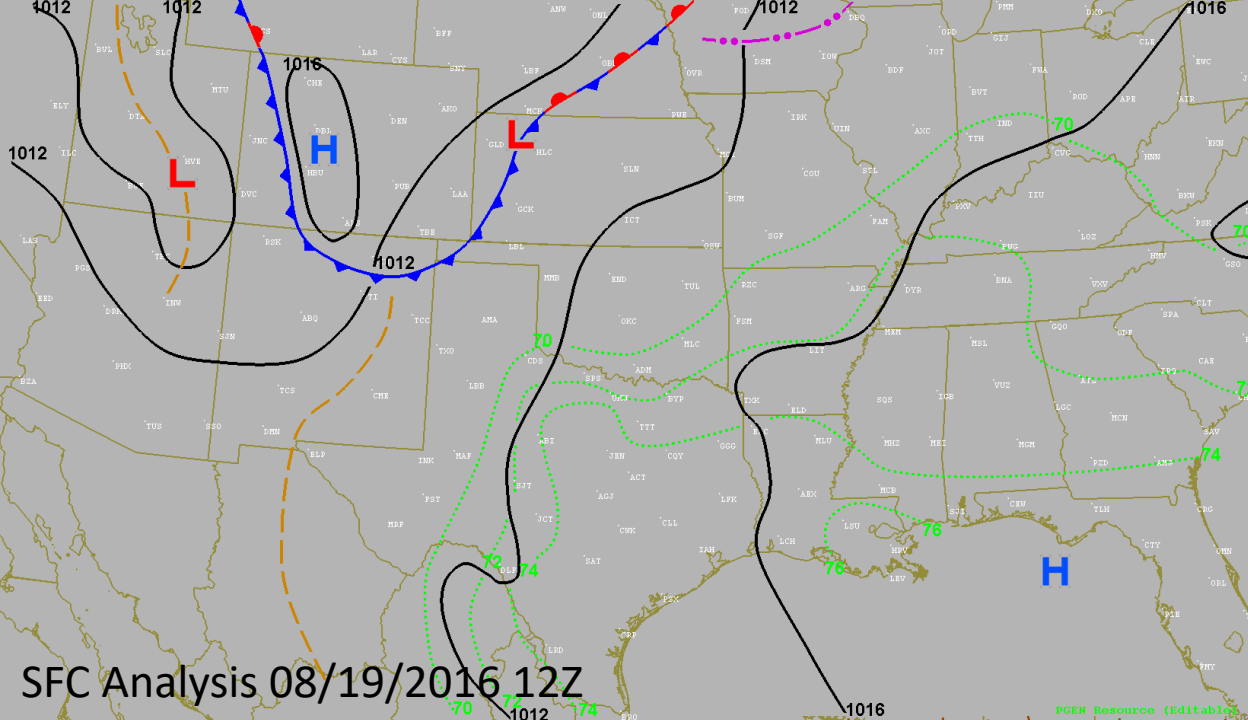


DFW Traffic Management Review

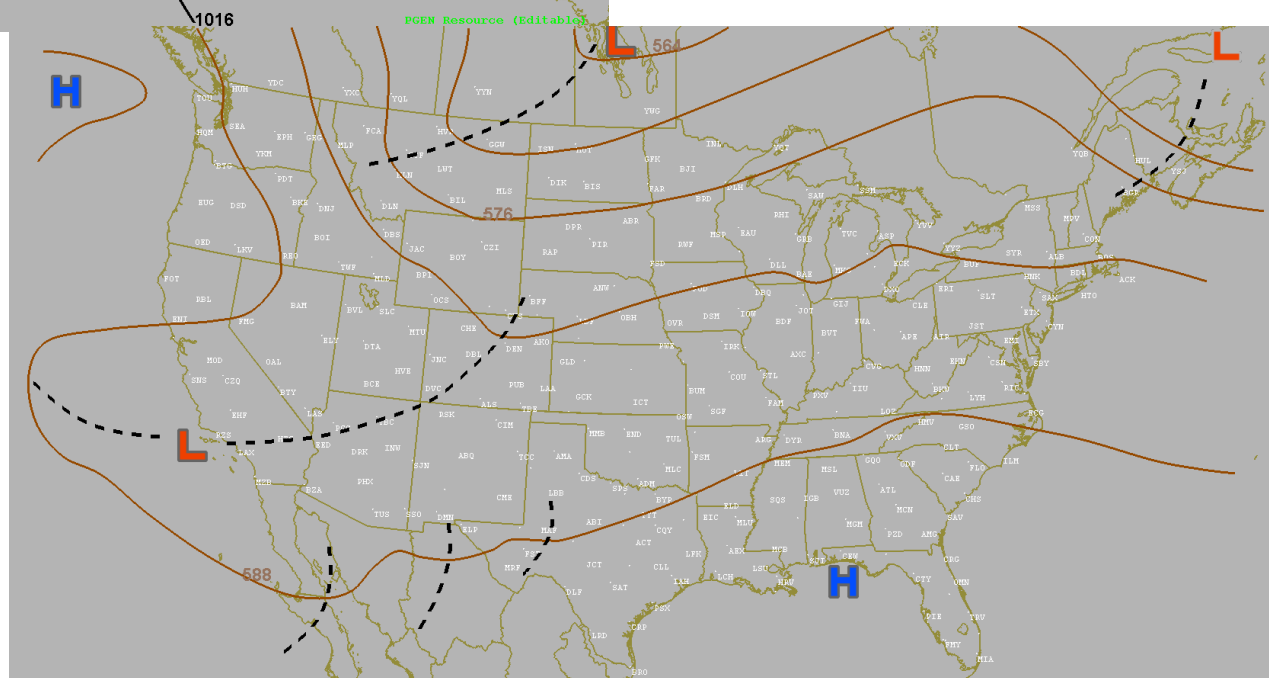
Date:
August 19, 2016

Presented to:
FPAW Spring 2024

Presented by:
Tom Amis
Meteorologist
Turbulent Aerospace

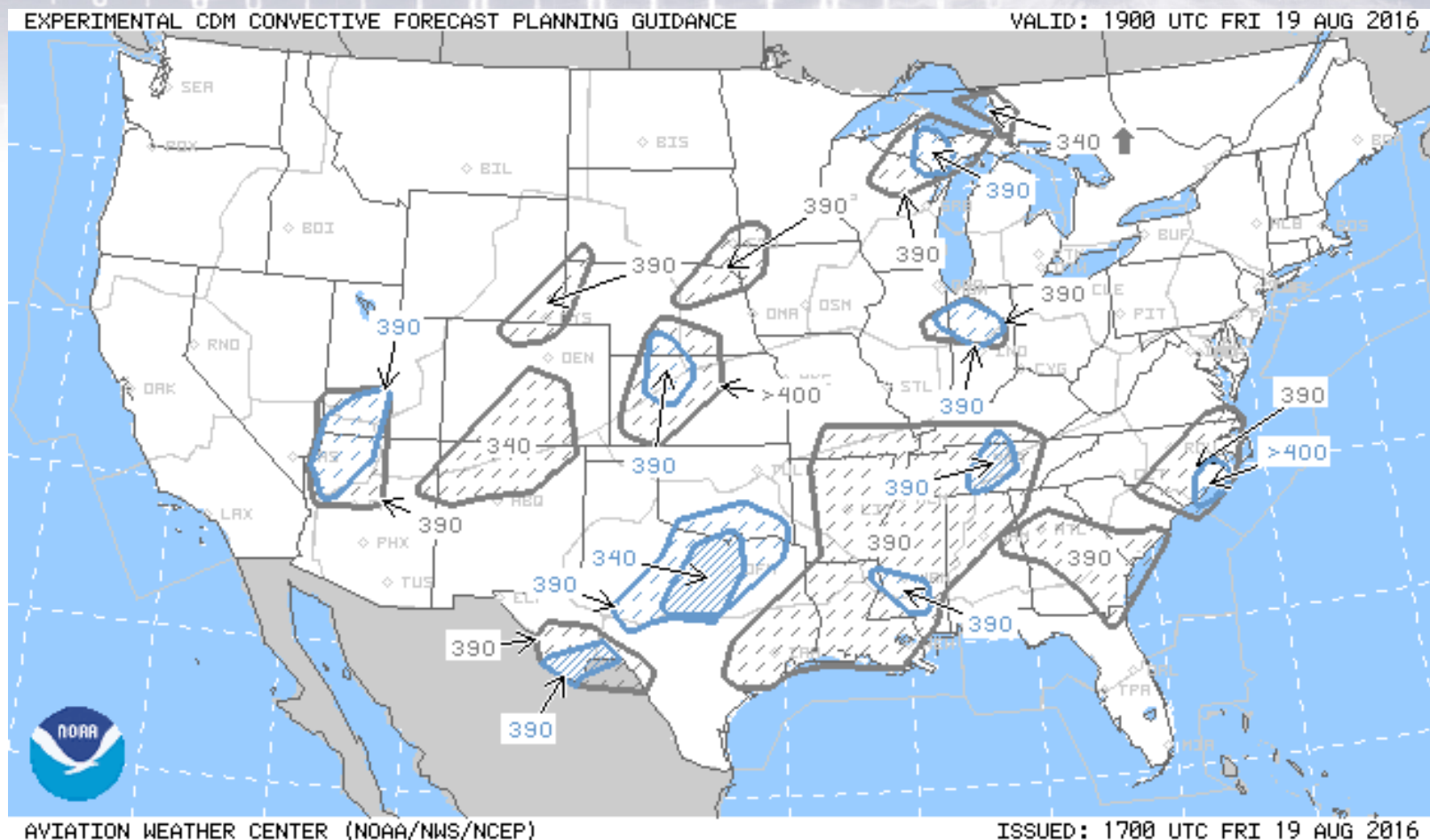


SFC Analysis 08/19/2016 12Z

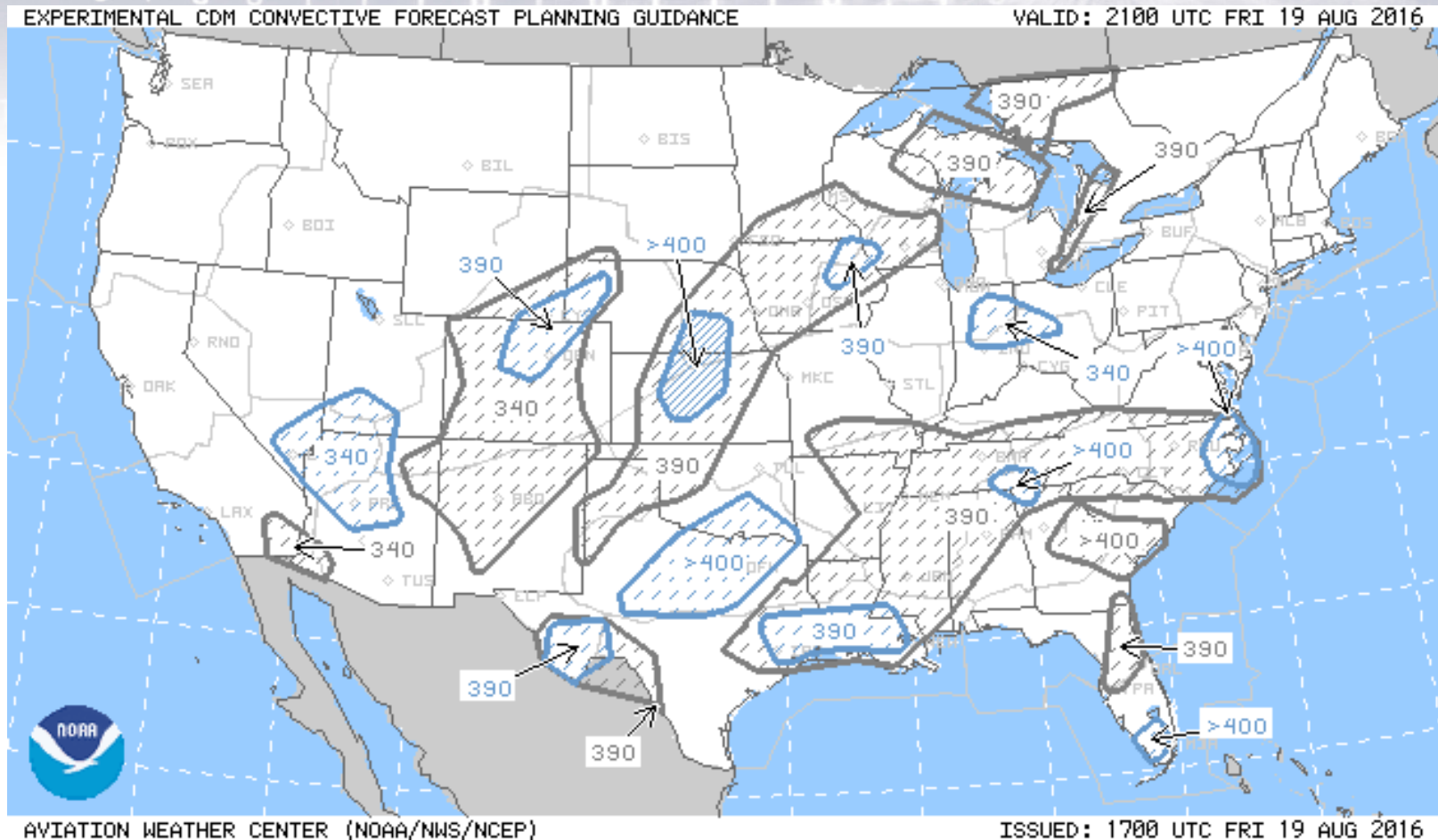


500Mb Analysis 08/19/2016 12Z

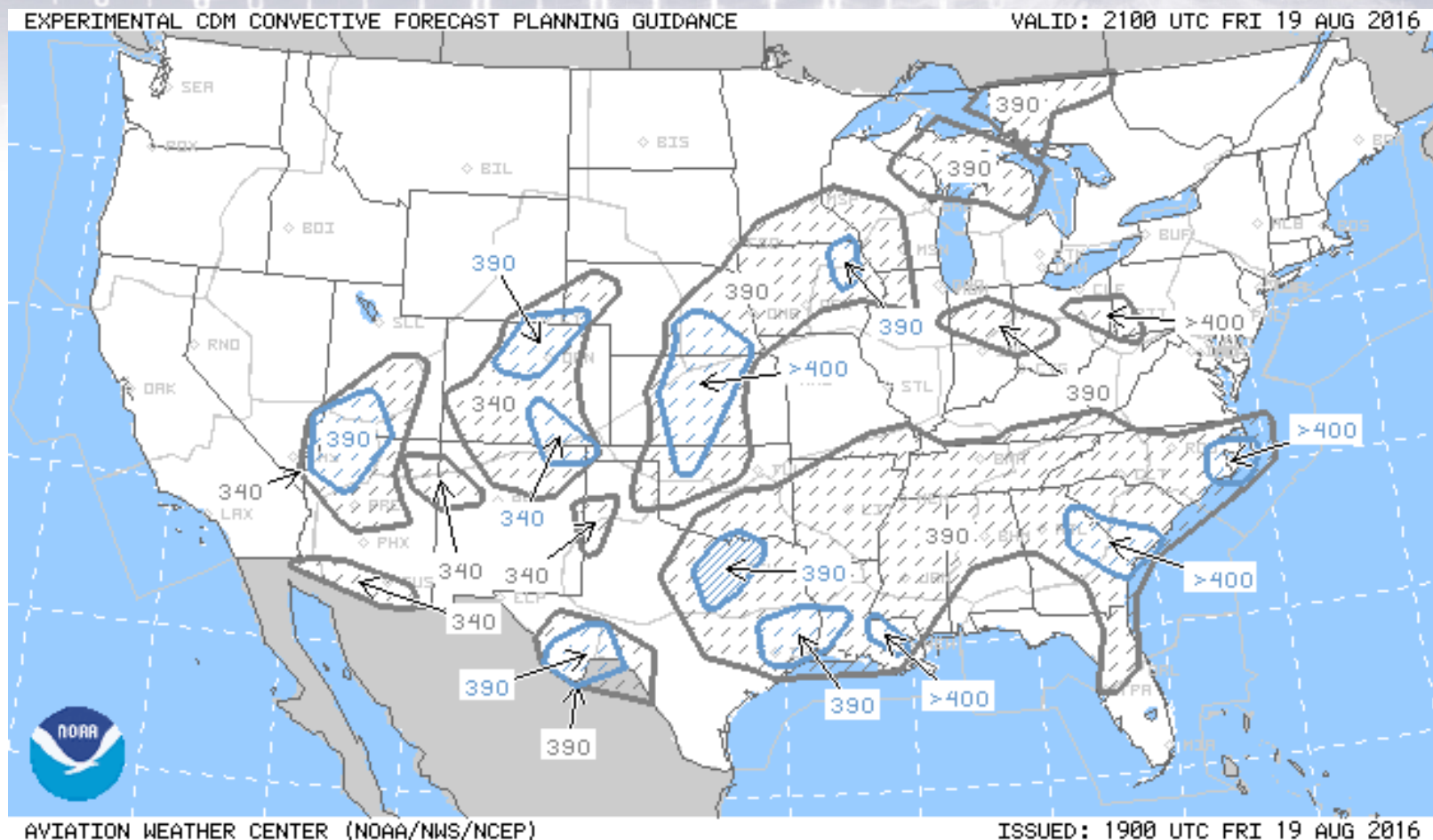
Issued 17Z Valid 19-21Z



Issued 17Z Valid 21-23Z



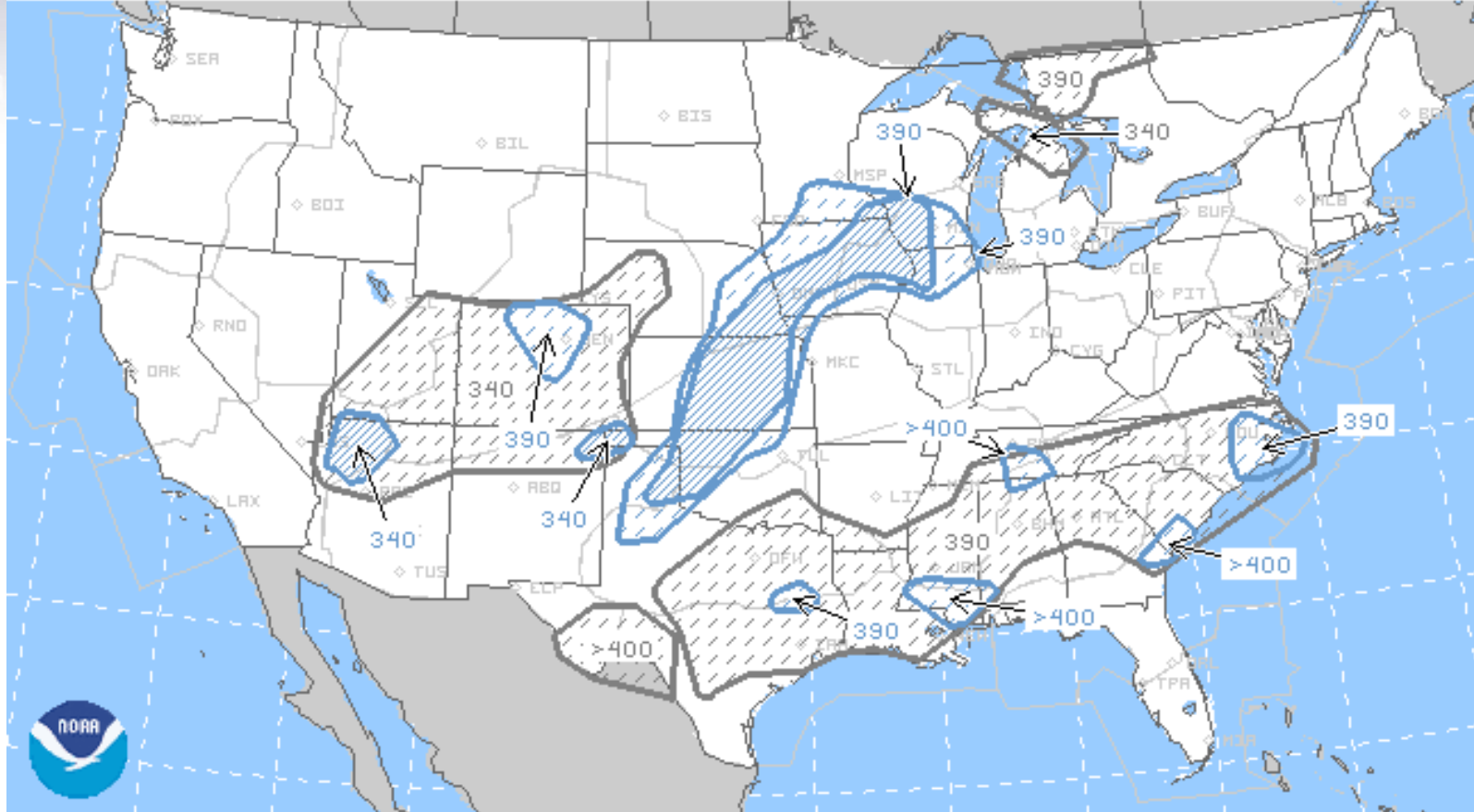
Issued 19Z Valid 21-23Z



Issued 19Z Valid 23-01Z

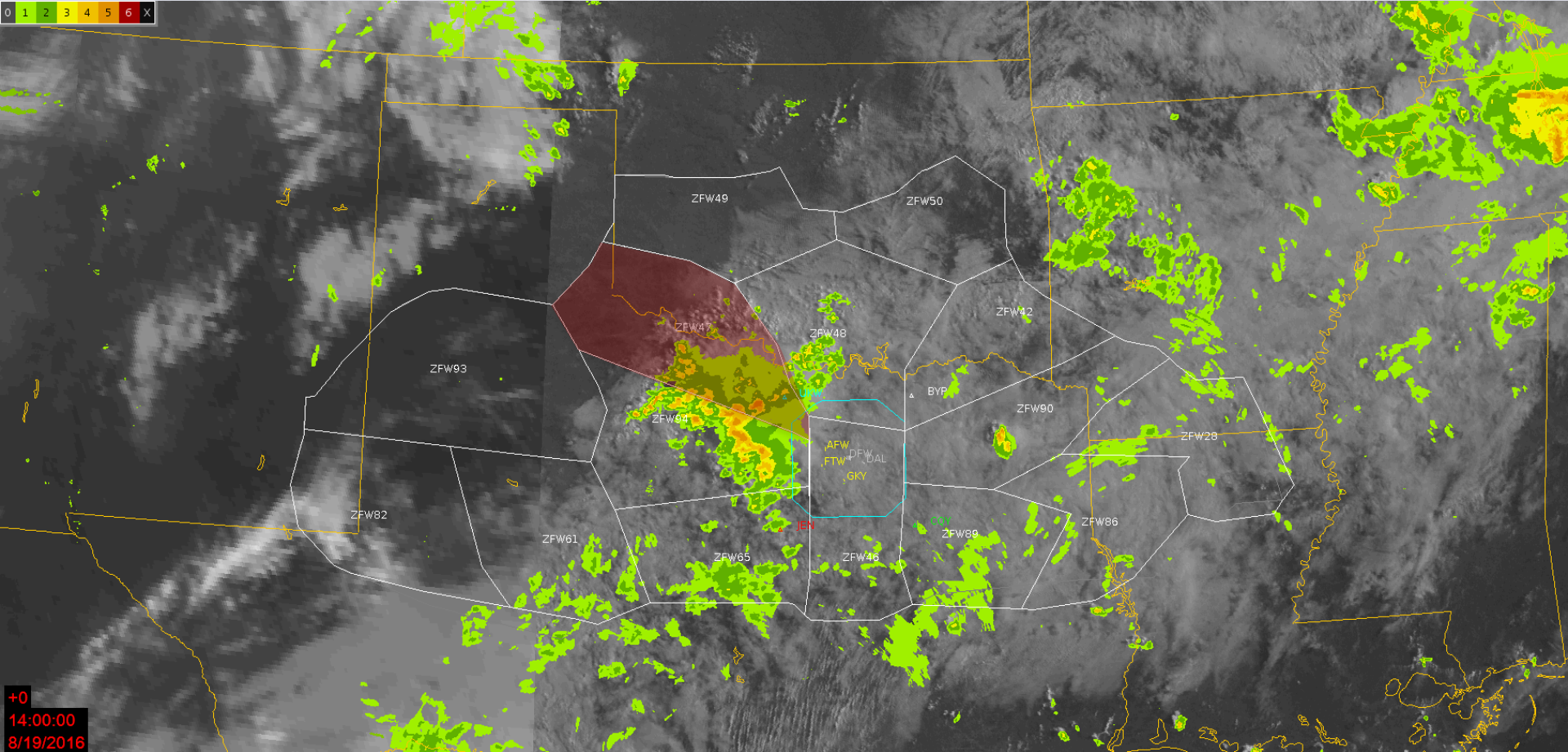
EXPERIMENTAL CDM CONVECTIVE FORECAST PLANNING GUIDANCE

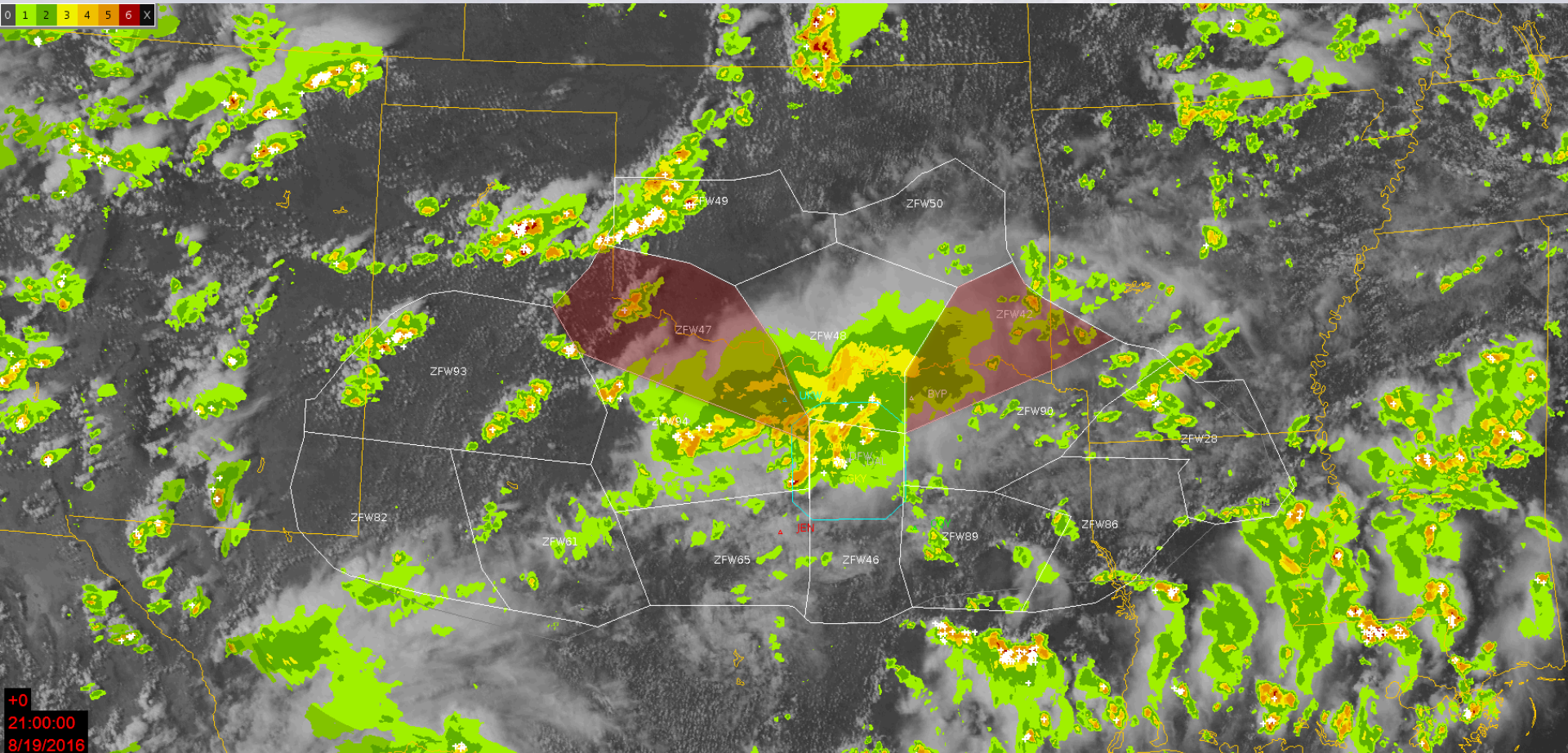
VALID: 2300 UTC FRI 19 AUG 2016

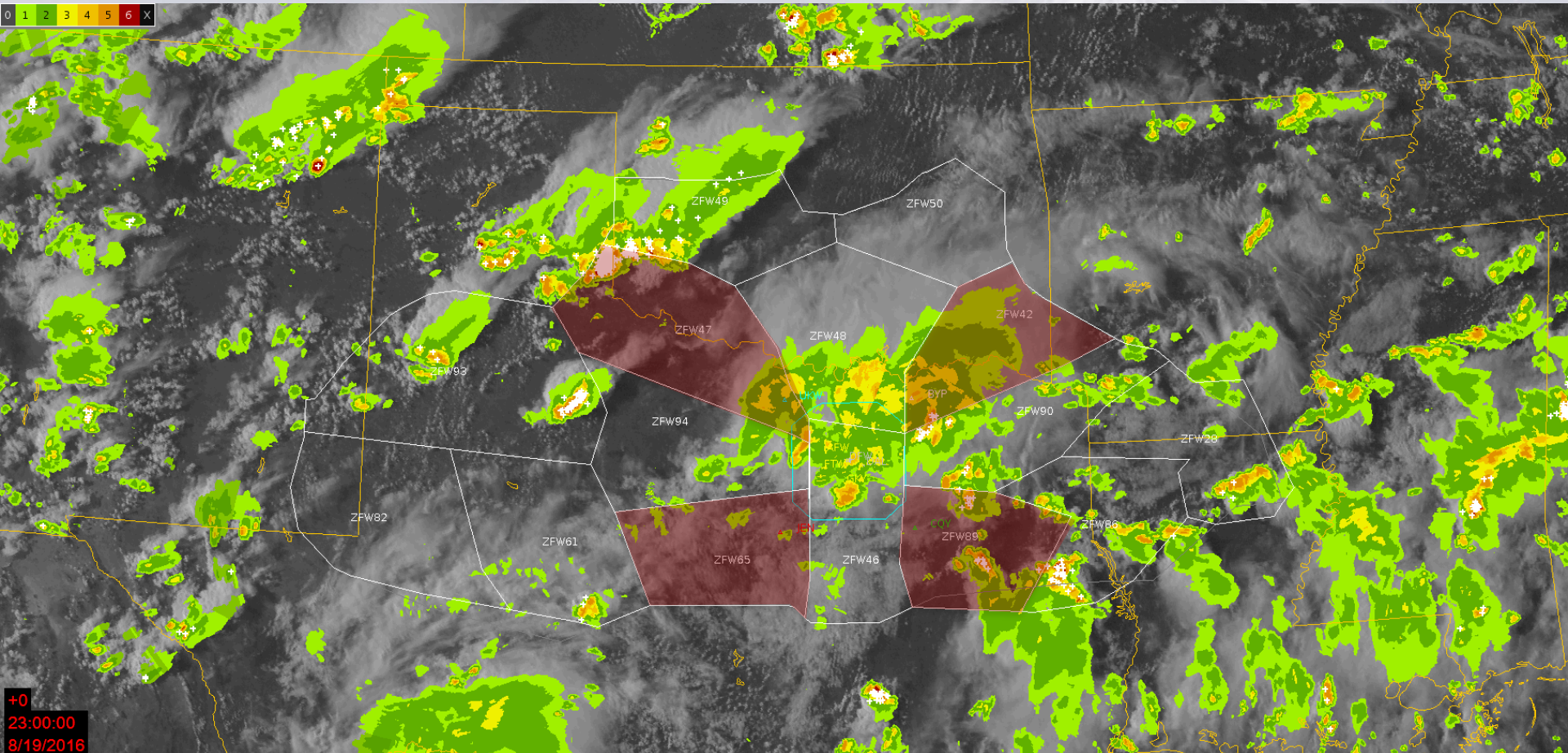


AVIATION WEATHER CENTER (NOAA/NWS/NCEP)

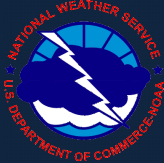
ISSUED: 1900 UTC FRI 19 AUG 2016





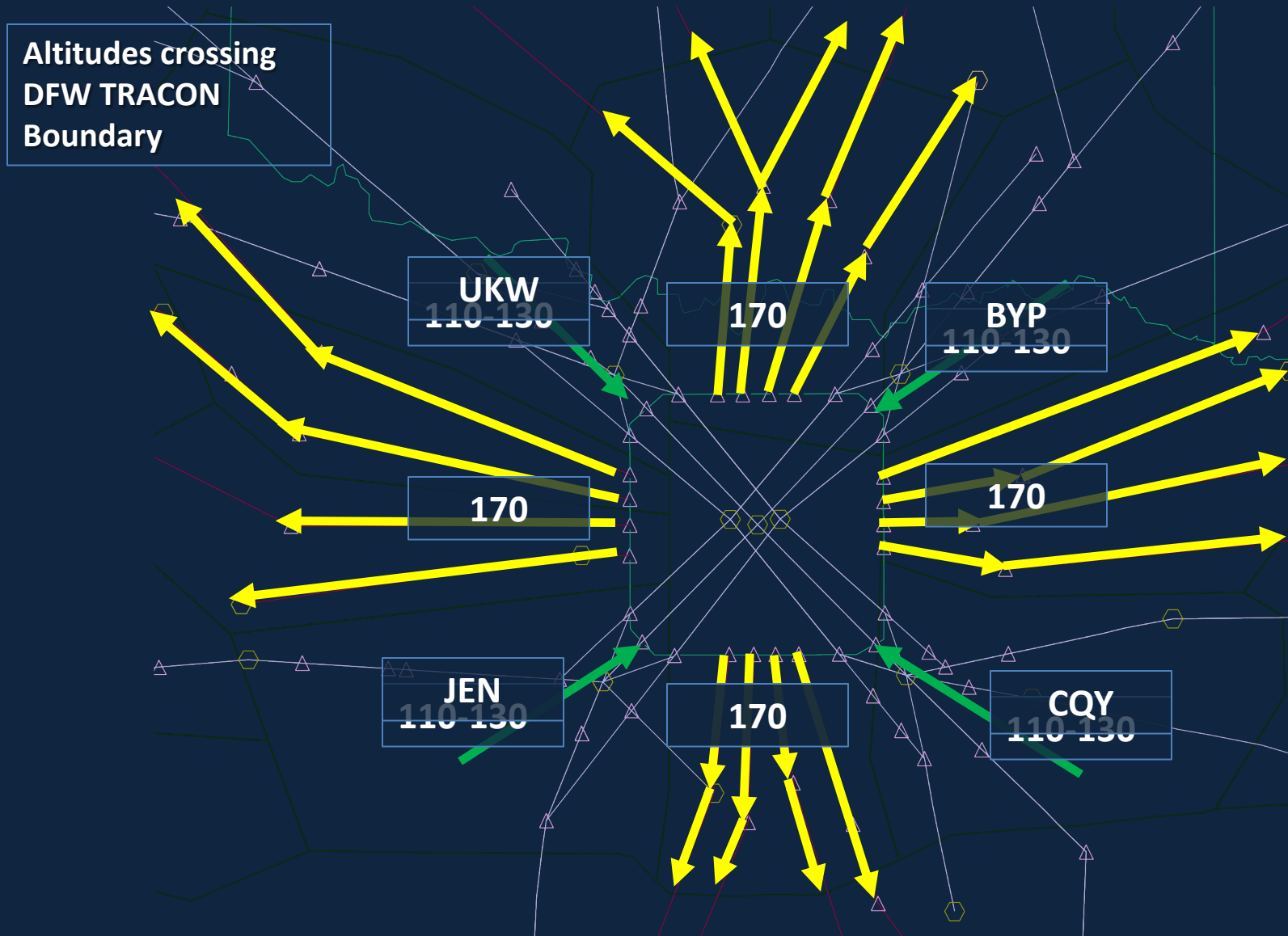




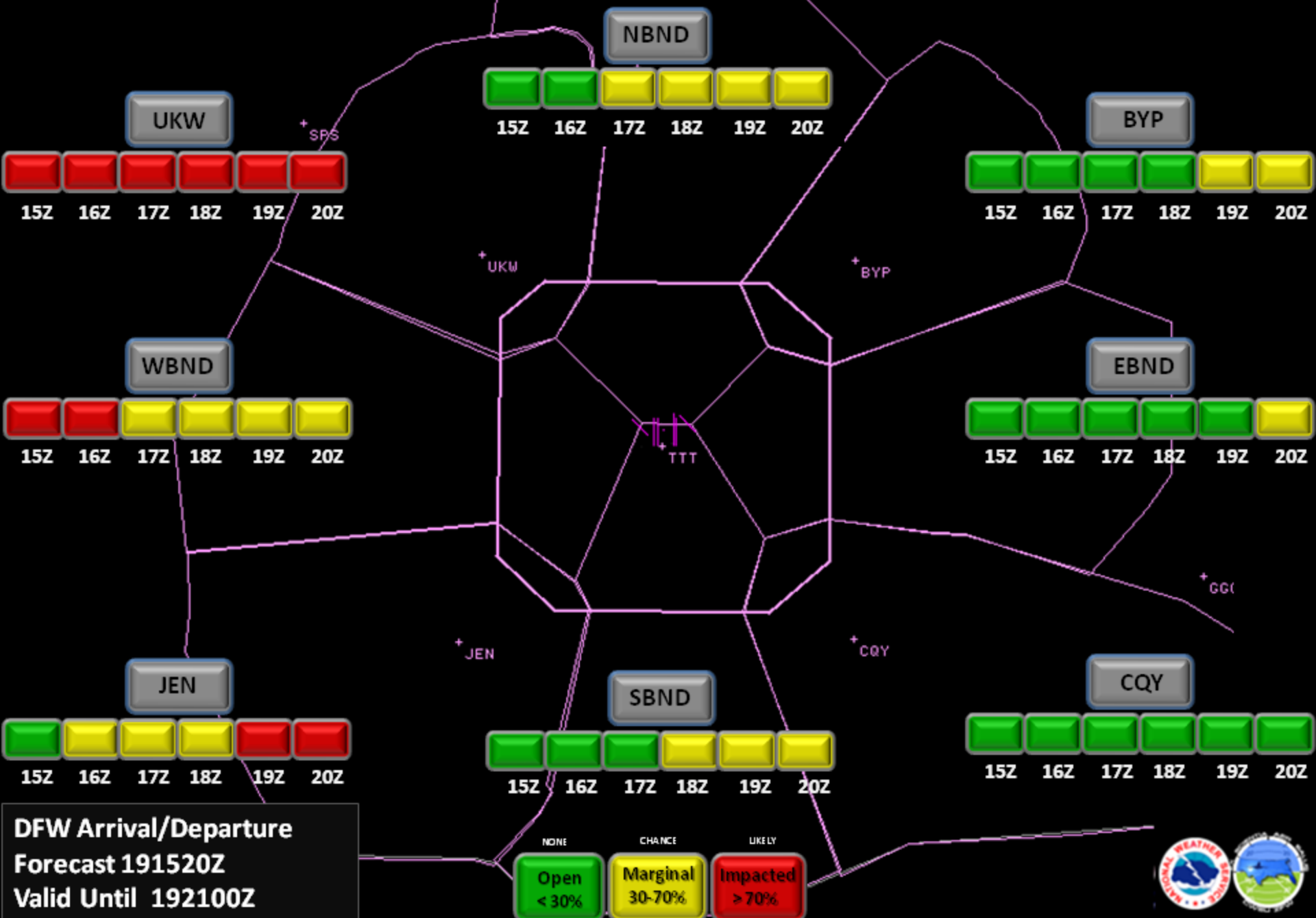


Dallas/Fort Worth TRACON

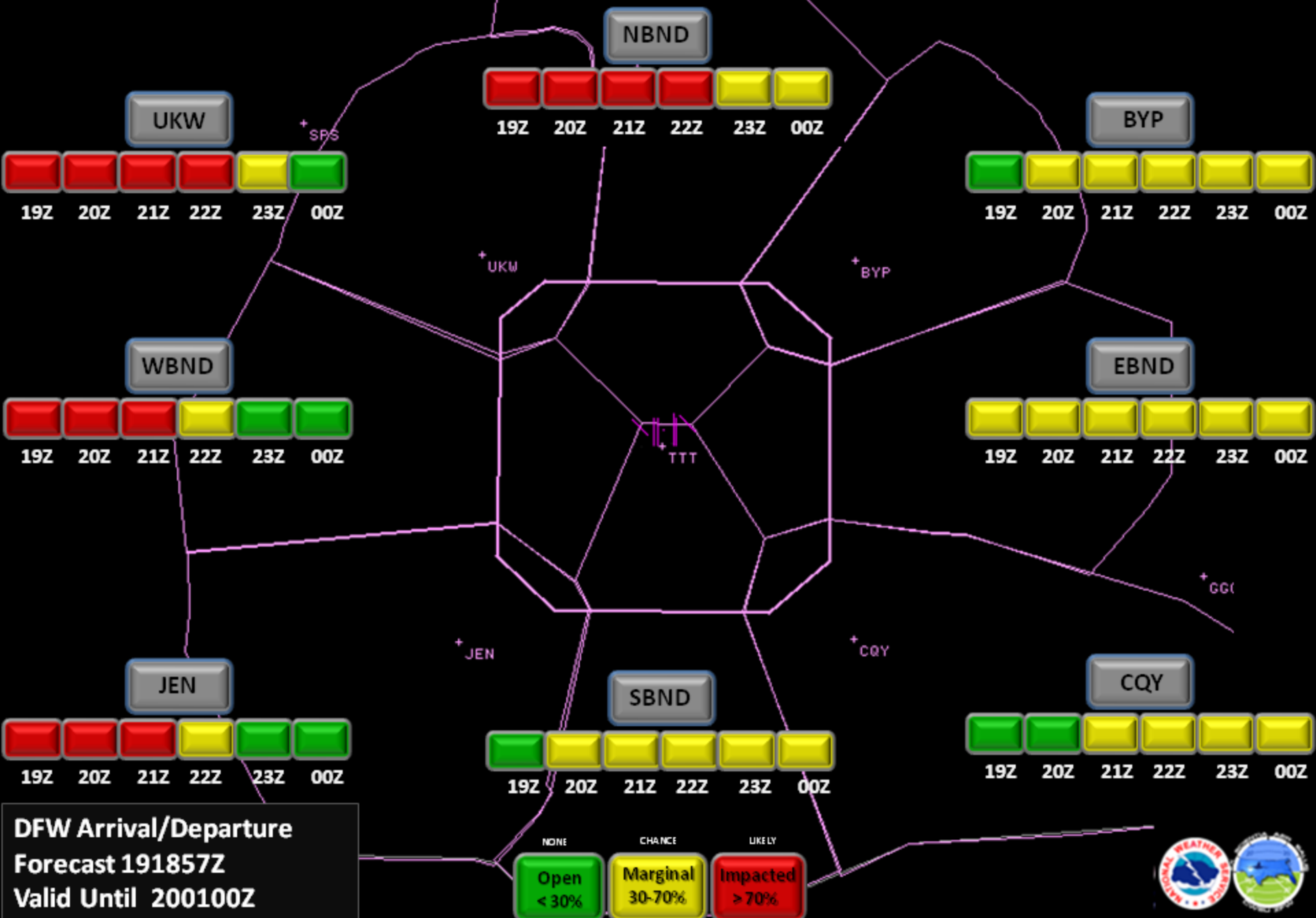
Normal Operational Flow



NWS CWSU ZFW Arrival/Departure Forecast Issued at 8/19/2016 191520z



NWS CWSU ZFW Arrival/Departure Forecast Issued at 8/19/2016 191857z



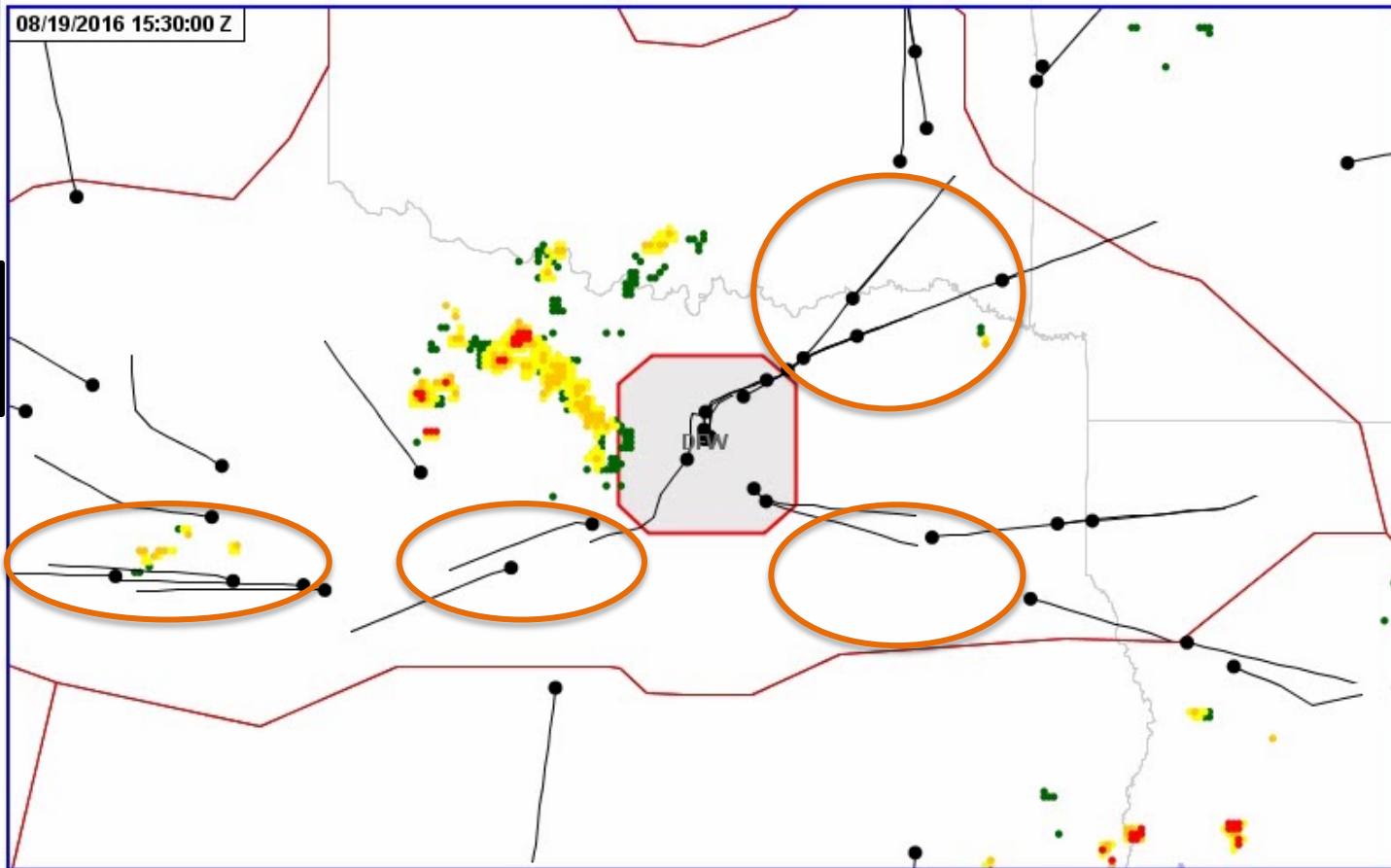
8/19 Weather Event Timeline

<u>TIME</u>	<u>ARRIVALS</u>	<u>TIME</u>	<u>DEPARTURES</u>
1346	UKW 10 MIT & JEN 15 MIT Arrivals	1154	1 W OTG Departures
1450	UKW DFW Jets Stopped Arrivals	1356	Stop W Gate Departures
1547	JEN 10 MIT Arrivals	1407	1 W OTG Departures
1942	JEN DFW Jets 15 MIT Arrivals	1437	2 N Departures
1947	CQY DFW 15 MIT & BYP DFW 10 MIT Arrivals	1500	SWAP W Gate Departure N & S
2014	BYP DFW 15 MIT Arrivals	1614	1 N 10 MIT Departures
2022	CQY Stopped Arrivals	1654	1W OTG 10 MIT Departures
2035	DFW Stopped Arrivals/Departures	1731	N Gate Stopped Departures
		1742	N Gate SWAP E & W Departures
		1822	Stop W Gate Departures
		1832	1 W OTG 15 MIT Departures
		1845	W Gate Stop SWAP S Departures
		2035	DFW Stopped Arrivals/Departures

8/19 Weather Event Timeline

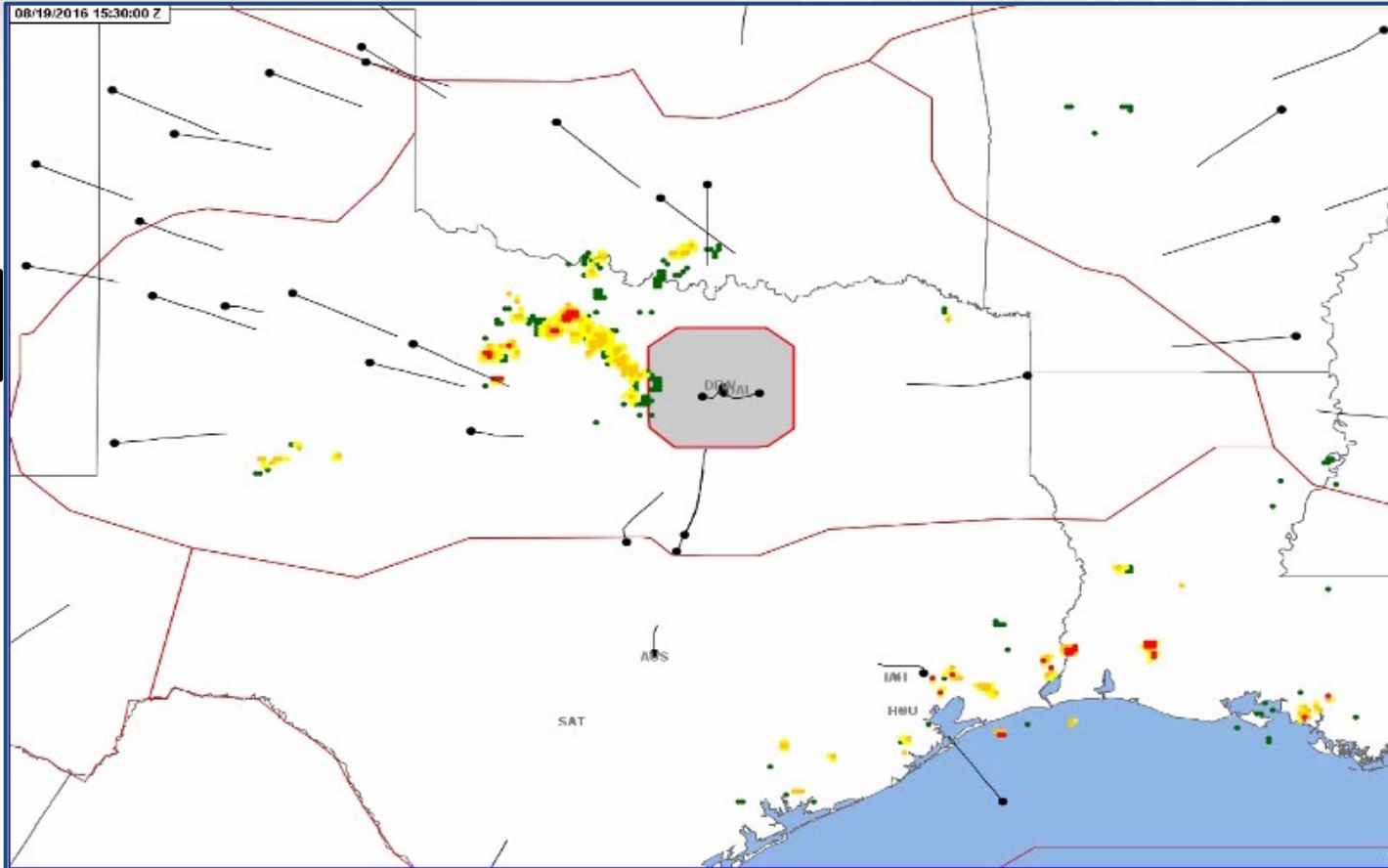
<u>TIME</u>	<u>ARRIVALS</u>	<u>TIME</u>	<u>DEPARTURES</u>
0001	JEN DFW 15 MIT Arrivals	0020	East Gate Stopped Departures
0001	Arrival Test Ships at BYP/UKW/CQY		
0014	CQY DFW 15 MIT Arrivals	0035	3 N Departures
0022	BYP DFW 10 MIT & JEN DFW 10 MIT Arrivals		
0040	BYP & JEN MIT Cancelled Arrivals		
0127	CQY DFW MIT Cancelled Arrivals		
0133	BYP DFW MIT Cancelled		
		0047	2 S Departures
		0049	E Gate SWAP Departures
		0127	3 N Cancelled Departures
		0129	1 E OTG Departures
		0158	2 S Cancelled Departures

DFW Arrivals 8/19 @ 1530 – 0000Z



TMI: 383
Diversions: 112
A/B Delays: 153

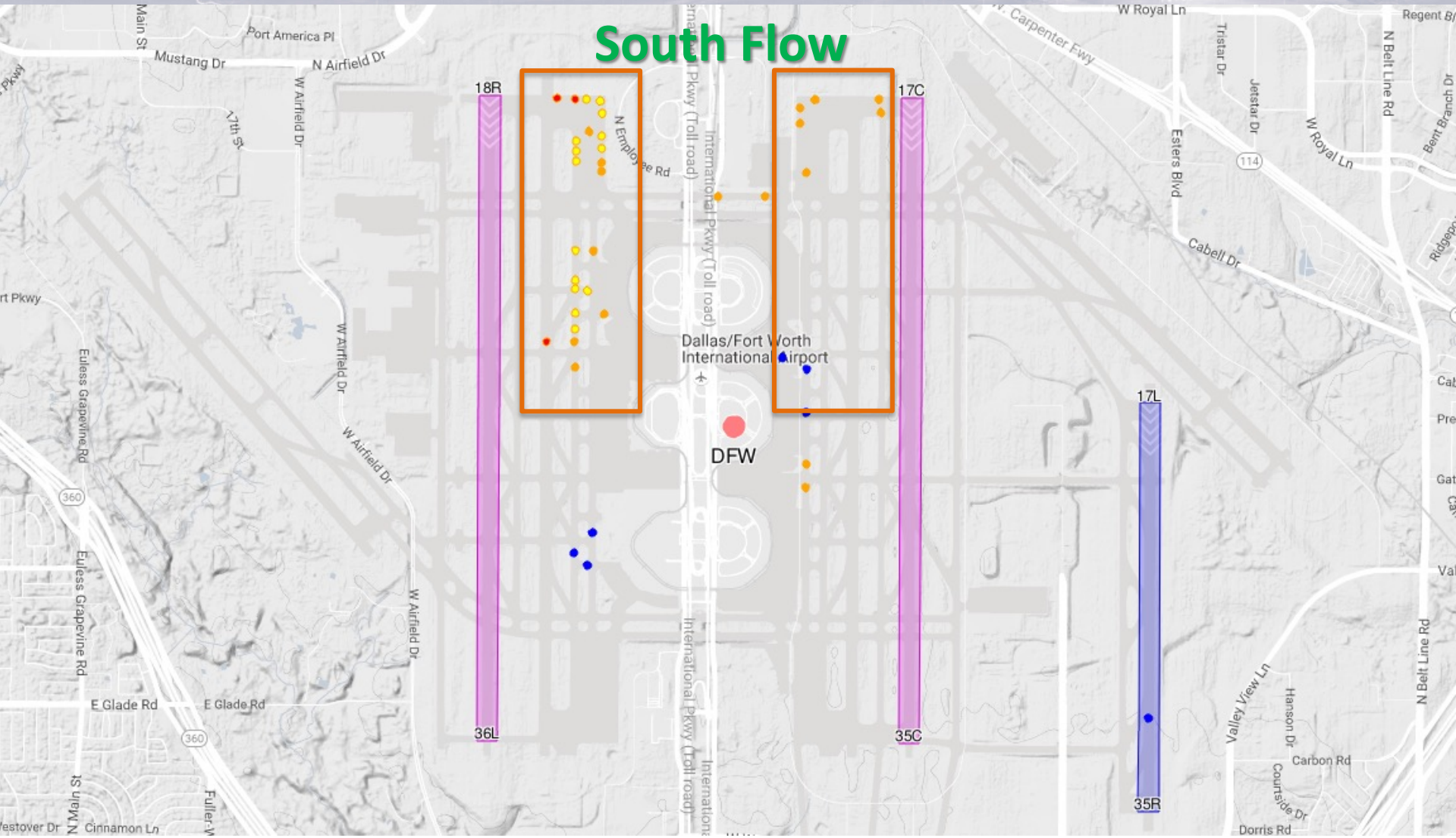
DFW Departures 8/19 @ 1530 – 0000Z



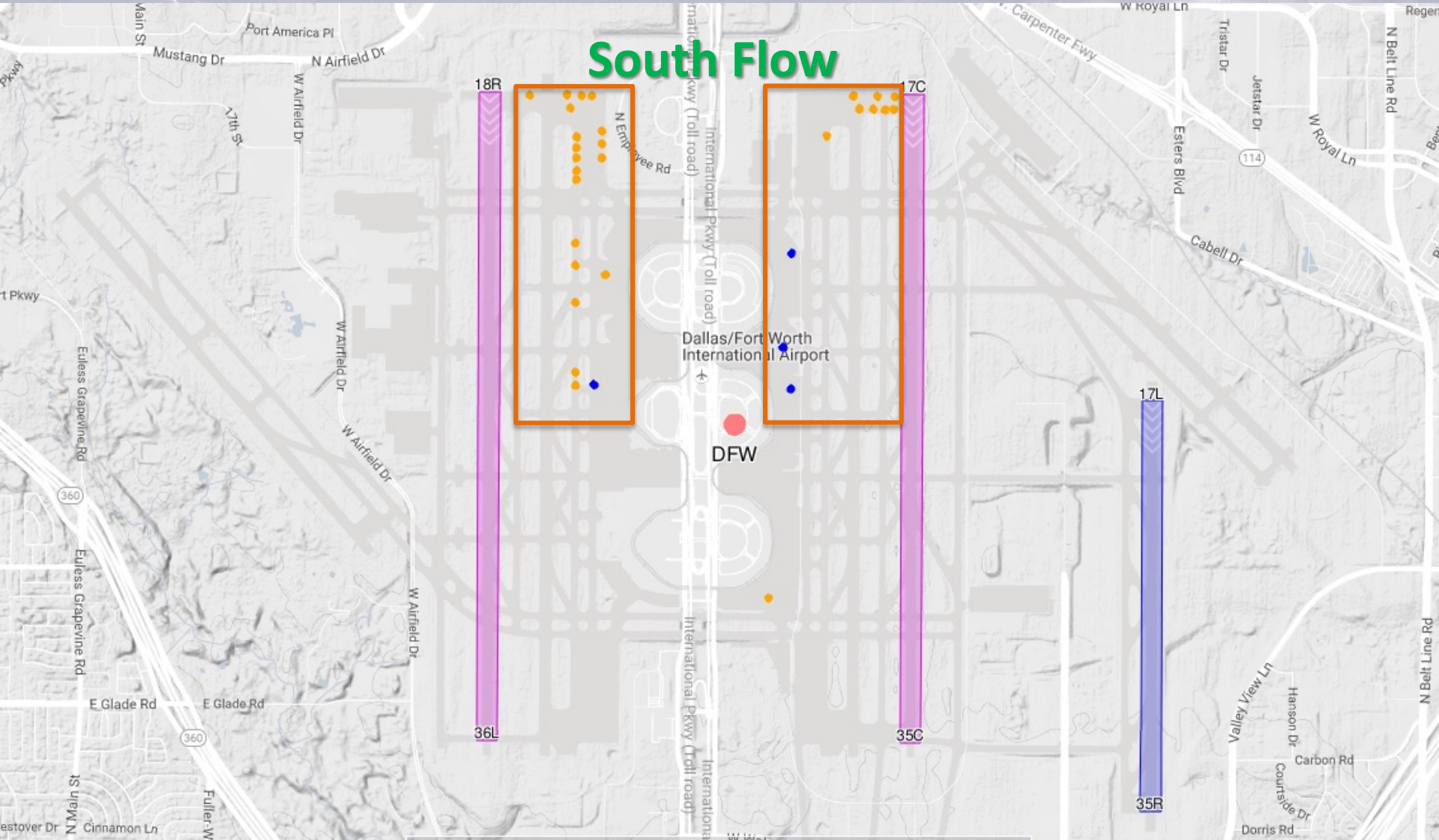
Throughput 8/19/16

DFW ACTUAL FLIGHT COUNT - 8/19/2016		
Hour(ZULU)	Arrival Count	Departure Count
08/19/2016 1200-1259Z	60	63
08/19/2016 1300-1359Z	36	39
08/19/2016 1400-1459Z	81	75
08/19/2016 1500-1559Z	37	41
08/19/2016 1600-1659Z	59	64
08/19/2016 1700-1759Z	50	68
08/19/2016 1800-1859Z	61	60
08/19/2016 1900-1959Z	55	29
08/19/2016 2000-2059Z	45	56
08/19/2016 2100-2159Z	12	14
08/19/2016 2200-2259Z	1	2
08/19/2016 2300-2359Z	8	44
08/20/2016 0000-0059Z	34	23
08/20/2016 0100-0159Z	70	22
08/20/2016 0200-0259Z	68	31
08/20/2016 0300-0359Z	47	33
08/20/2016 0400-0459Z	52	38

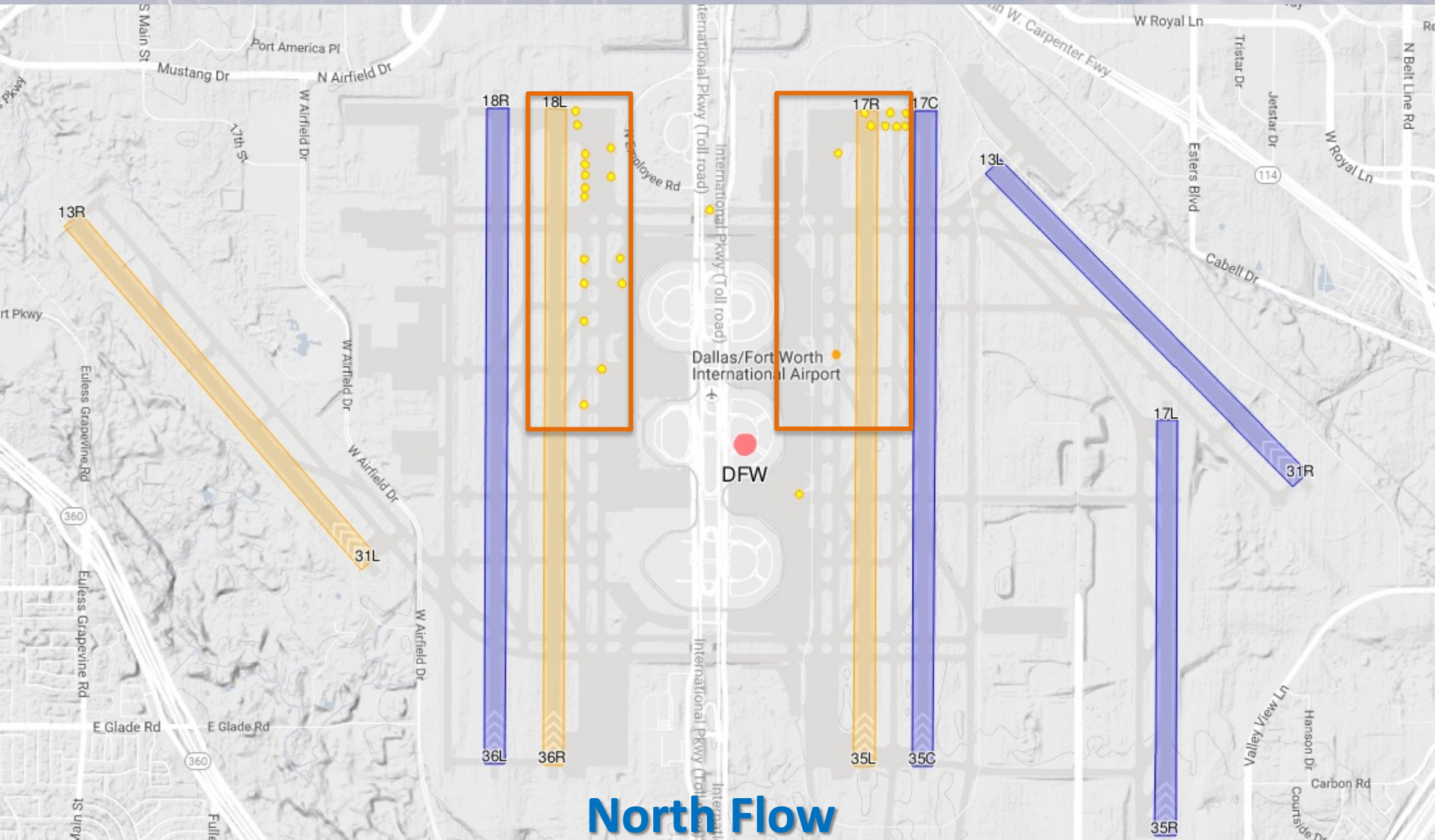
DFW 8/19 2100Z



DFW 8/19 2130Z

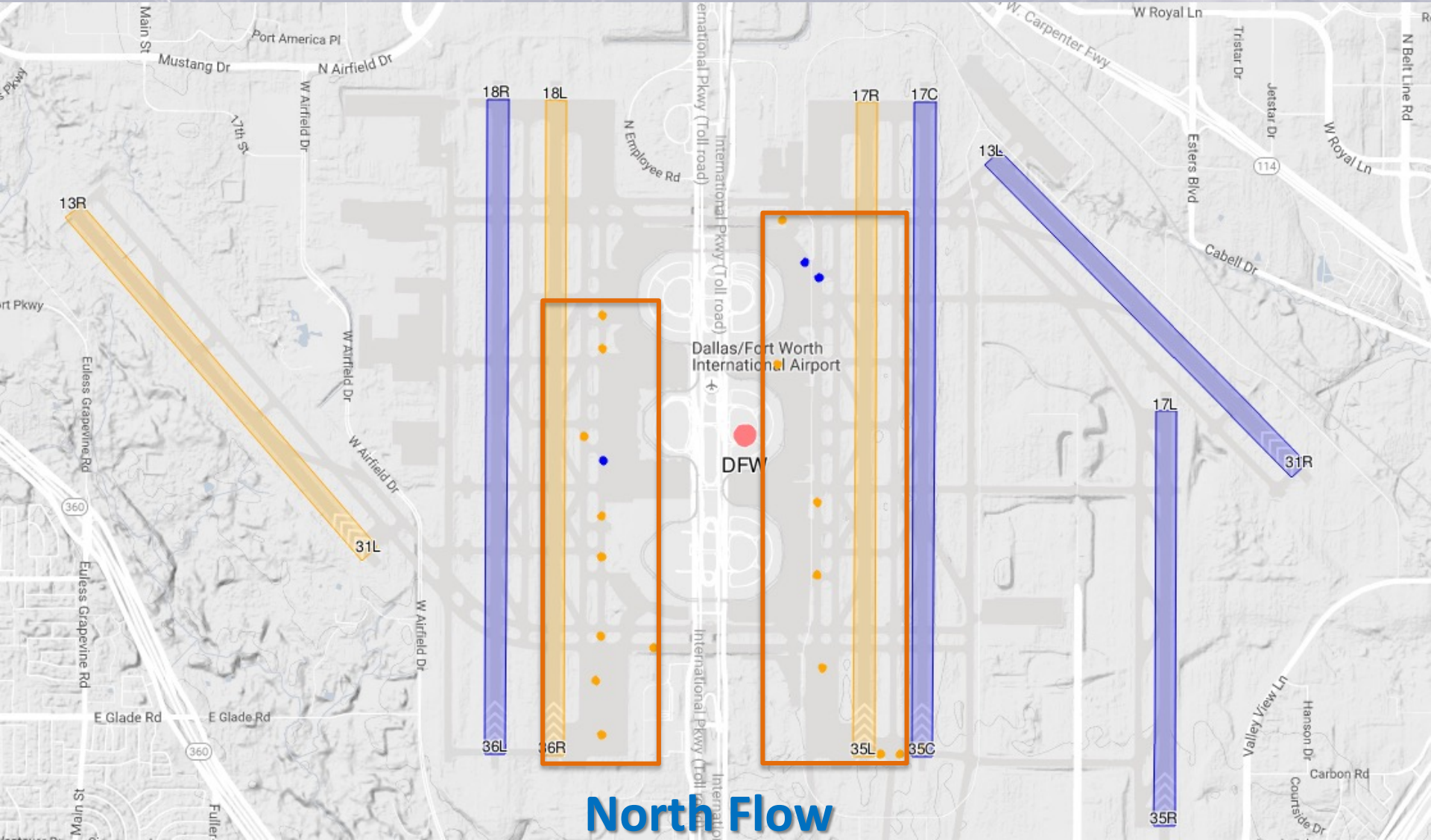


DFW 8/19 2200Z



North Flow

DFW 8/19 2230Z



Summary

- Significant NAS impacts despite a well forecast convective event
- Impacts began early in the Operational Day
- Slow arrival and departure rates began during the first inbound push
- CQY stop at 2022Z and then DFW Ground stop at 2035Z led to significant diversion event
- Arrival Impacts:
 - 383 TMI
 - 112 Diverts
 - 153 A/B Delays
- Departure Impacts:
 - 123 Delays
 - 36 Taxi backs