

Introduction to FAA's NextGen Weather Systems

External Web Access

Presented to: Friends and Partners in Aviation
Weather (FPAW)

By: Sonoka Ho, FAA NextGen Wx
Program Office

Date: October 29, 2024



**Federal Aviation
Administration**

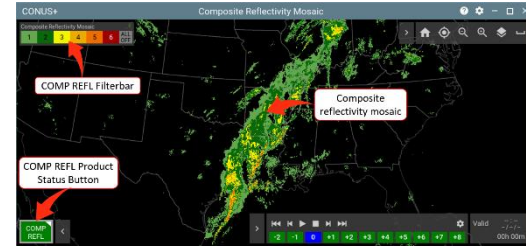
Purpose

- **Provide high-level overview of the NextGen Weather Processor Aviation Weather Display (AWD) External Web Server (EWS)**
 - EWS Key features
 - Register for an account
 - Access Information
 - Next Steps



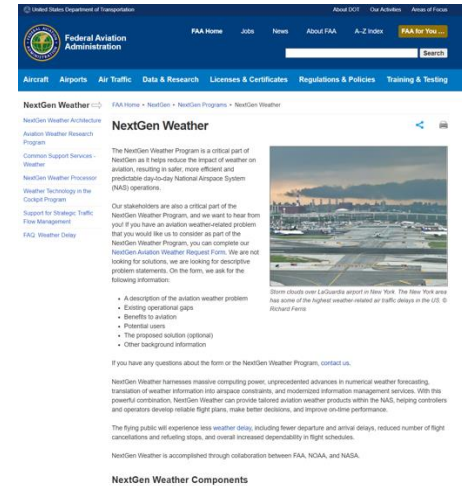
EWS Key Features

- **NWP AWD EWS will be publicly accessible for approved Internet-based users (e.g., airlines, general aviation)**
- **Architected similarly to the web server providing weather products to the Dedicated AWD for use internal to the NAS, users will experience similar look and feel when accessing the EWS**
- **It is currently designed to be viewed on a workstation/laptop form factor**



Register for an account

- **Coming soon, we will be updating the NextGen Weather faa.gov website (<https://www.faa.gov/nextgen/programs/weather/nwp/awd>) with information for users to learn more about the EWS and how to register for an account**
 - This will be the landing page that is Internet searchable and communicate to users about the EWS, how to obtain an account and how to obtain support
 - New users will need to complete an account registration form and be granted approval for access
 - Name, Email, Organization, Need statement, etc.



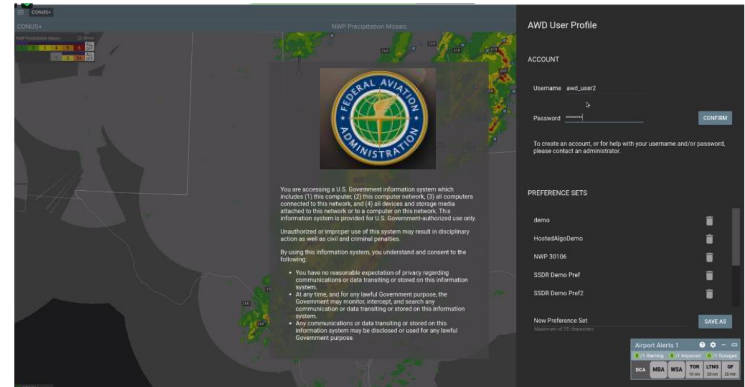
EWS Access

- **Access to the EWS will follow similar process for users requesting access to CIWS/CoSPA website**
 - For FAA, NAV Canada and Airline users, access request will be given higher priority
 - Although EWS will sunset CIWS/CoSPA, we do not plan to automatically migrate users over to the EWS
 - For users outside of FAA, NAV Canada and Airlines, the request will be prioritized based on needs
 - Users must be able to clearly articulate need to access EWS and need by date
 - This will allow the Program to balance priority of access and EWS compute limitations



EWS Login Page

- EWS logon screen is similar to the Dedicated AWD
- Note:
 - 1 browser session per user account (no account reuse across multiple computers); 5 view types per browser session
 - EWS works best with Google Chrome browser



Next Steps

Phase	Description
Early Adopters Onboarding	Early adopters to test onboarding processes, access to EWS test instance, fine-tuning, support desk, etc. Please contact Dan Dennis at dan.dennis@faa.gov
Operational Onboarding	Onboard priority users to EWS operational instance

- **The NWP AWD EWS will provide approved users access to the rendered weather products versus digital data**
- **The CIWS website will be retired in FY26**

