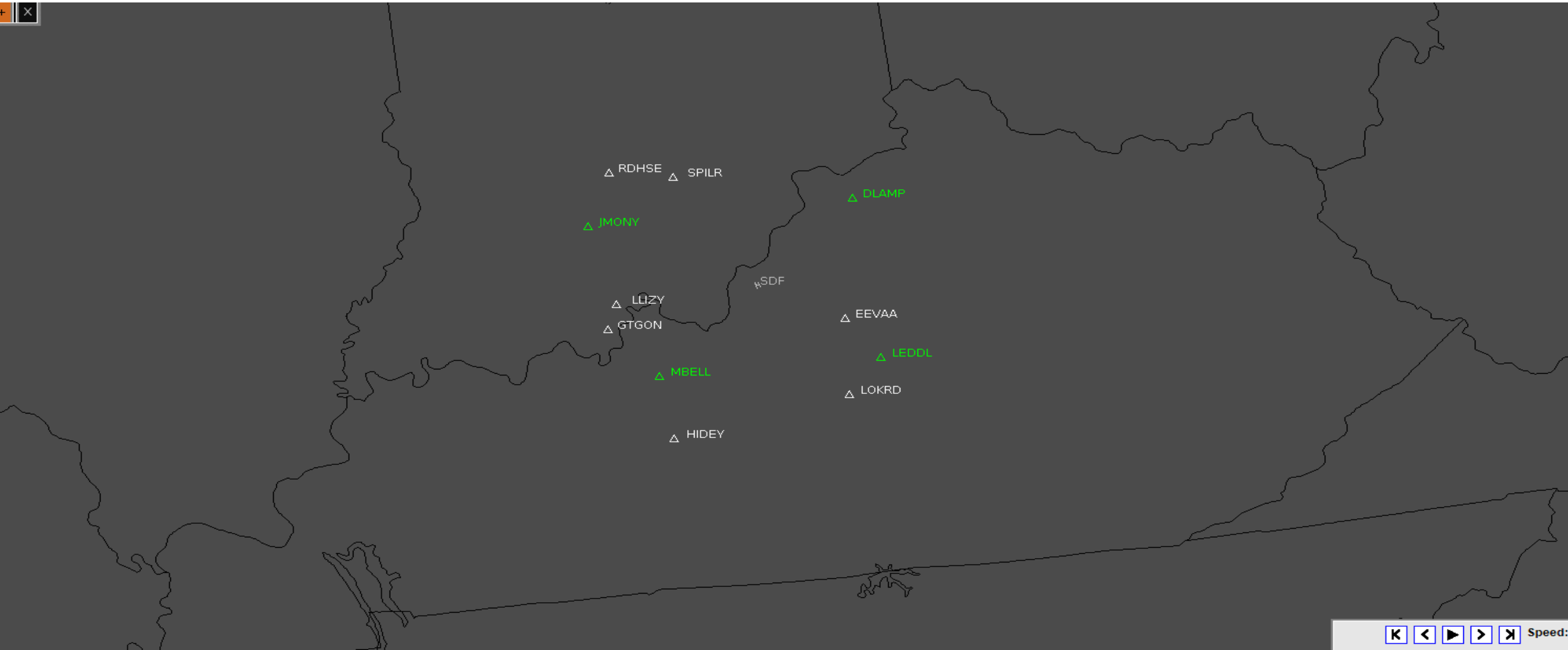


# CoSPA/CIWS decision support tool

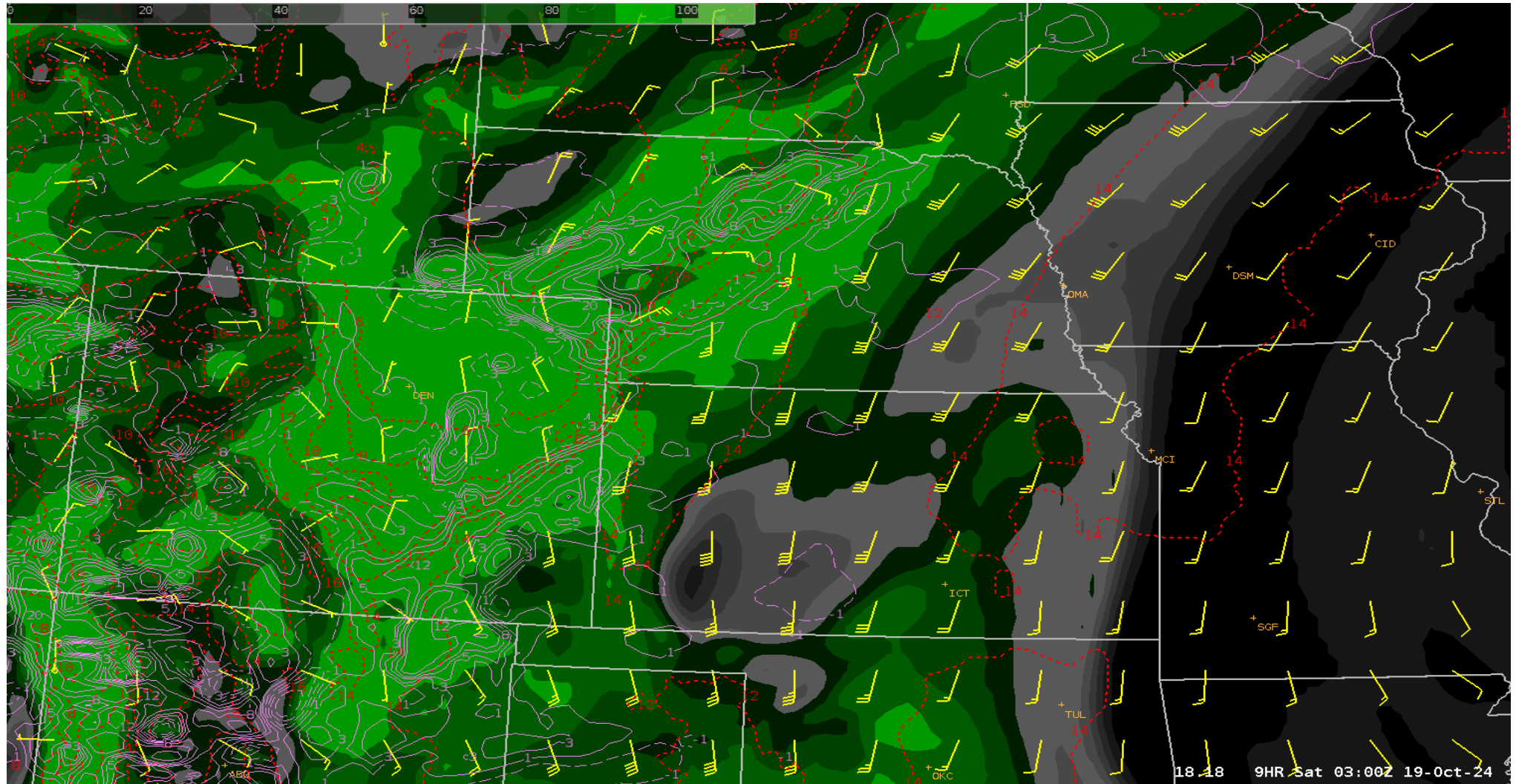


Jeff Sarver UPS Meteorologist

# SDF arrival and departure fixes



# Review model guidance determine type storm risk



# Publish forecasted impact times



## Weather Alert

03-06z Fri: 70% risk for a period of lightning within 5NM.

Expect a scattered line of storms to approach from the NW impacting JMONY about 03z, DLAMP, SDF, MBELL about 04z, then LEDDL about 05z. All T-storm activity will be out of the area by 06z.

Forecast:\*\*LOUISVILLE (SDF)\*\*

Aviation Forecast Valid 02-08z Fri

FM180200 21012G18KT P6SM SCT040

FM180400 27018G28KT 2SM TSRA BR BKN030CB

FM180500 33015G25KT P6SM BKN025

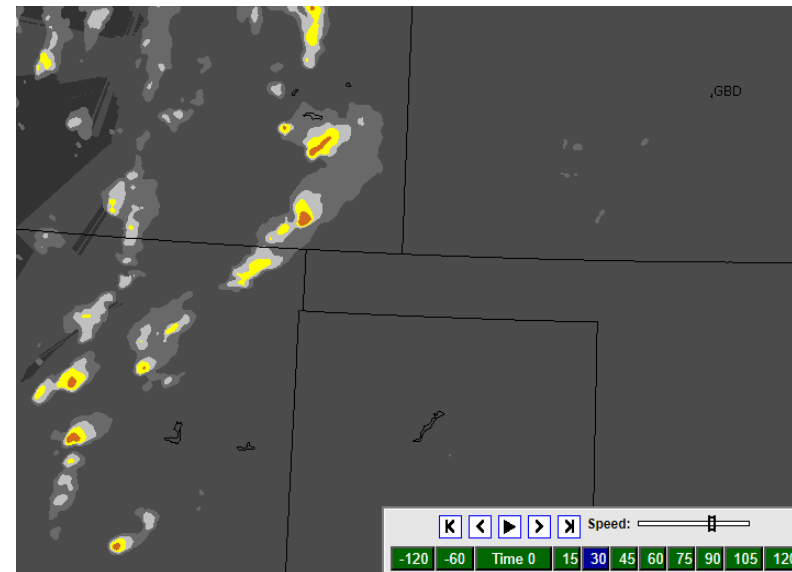
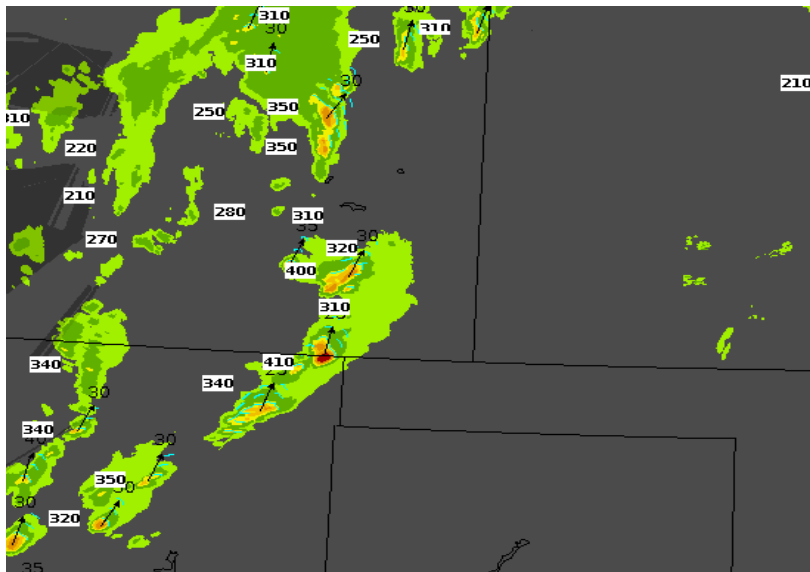
# Provide briefings

- Flight Planning Support
- Dispatchers
- Louisville NWS
- SDF Tower
- INDY Cneter



# Event Occurring

- Monitor radar and CIWS/CoSPA for more accurate timing
- Communicate, communicate, communicate to all changes if any of impact times



# Event ending

- Capture feedback
  - Lesson learned
  - Improvements needed
  - Best practices



