

Approaches to Dispatcher Training at ERAU

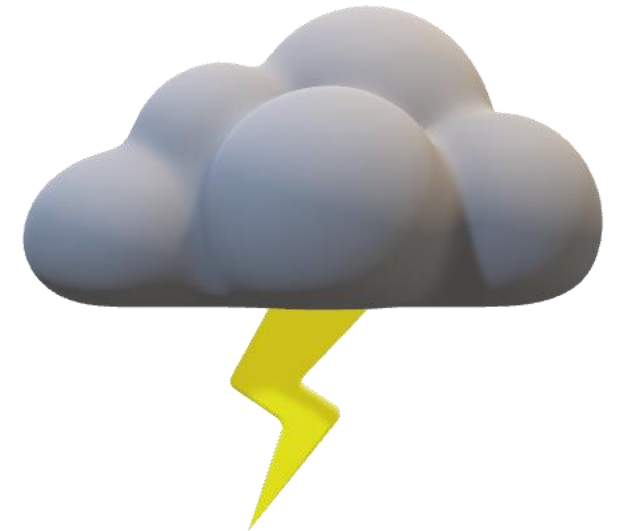
Godfrey D'souza

EMBRY-RIDDLE
Aeronautical University



Today's Agenda

- Personal Certification Process and Industry Experiences
 - ERAU Dispatcher Course
 - Industry Training and On Job Experience
- Challenges to Effective Weather Education for Dispatchers
 - Knowledge, Training, and Experience
- Possible Changes to Improve Weather Training
 - Strategies Industries could Incorporate
- Changes to Dispatcher Training at ERAU
 - Strategies Incorporated to Improve Weather Training



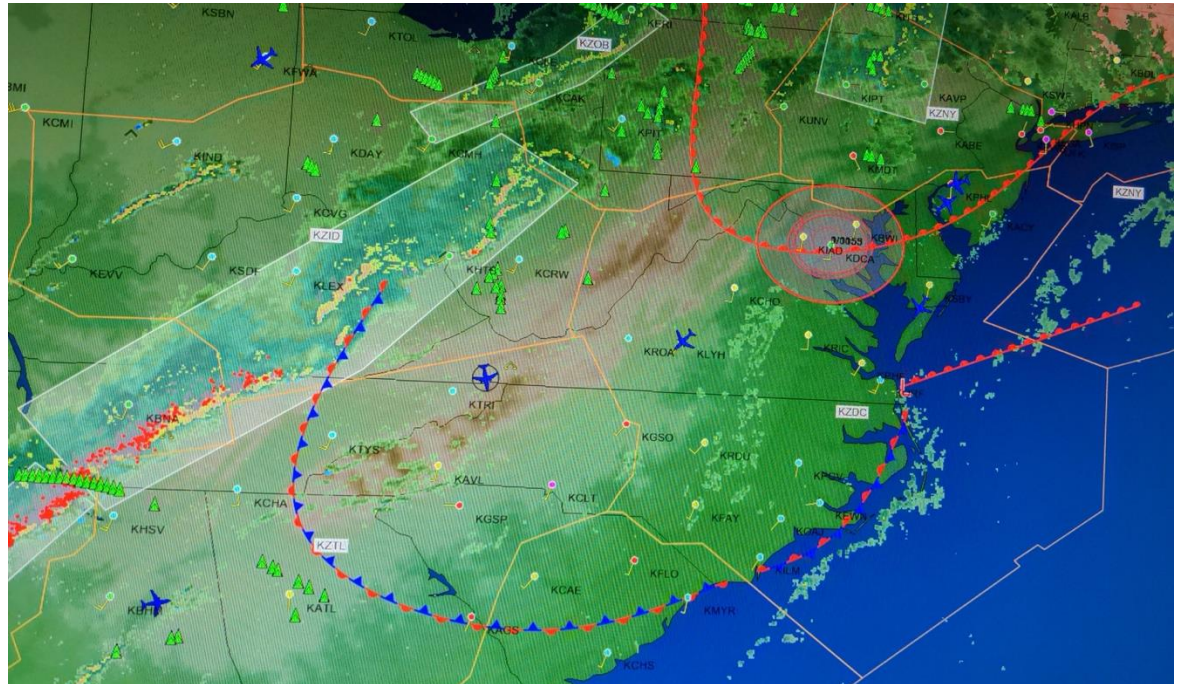
Personal Certification Process and Industry Experience

- Graduated Dispatch course at ERAU and obtained certificate in 2016.
- Weather courses prior to Dispatch certification.
- Indoc. Training at the Airlines.
- On-Job Training and On-Line Experiences
- Summer and Winter Ops Recurrent Training.



Challenges to Effective Weather Education for Dispatchers

- Diverse background in the industry.
- Basic weather knowledge to get through training.
- Minimal weather training in ground school or on-job-training.
- Self taught weather trends and safety measures.



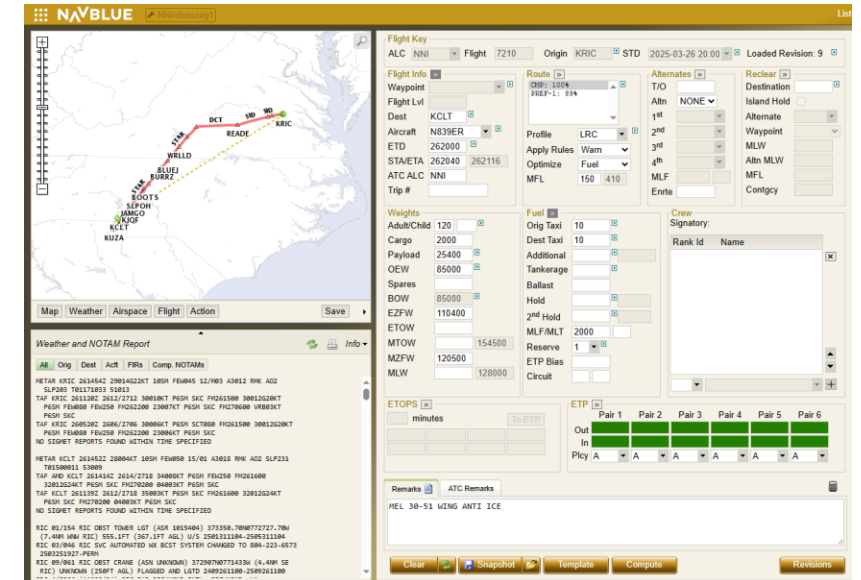
Possible Changes to Improve Weather Training

- Use of Weather Software in Dispatch Certification Training and Practical Examination.
- Refresher courses provided by the FAA for Dispatch Weather Training.
- Dedicated ground weather training sessions in the company during Indoc. Training
- Meteorologist and Educators promoting training workshops in a company.



Changes to Dispatcher Training at ERAU

- Introduced a more structured way to gather weather for the practical examination.
- Teaching industry standard software in Airline Operations Command and Control class.
- Using scenario-based training where decisions need to be made using different sources of weather products.
- Future Dispatcher Training goals at ERAU.



QUESTIONS?

THANK YOU

Godfrey D'souza, Assistant Professor
Aeronautical Science | College of Aviation
dsouzag1@erau.edu

EMBRY-RIDDLE
Aeronautical University