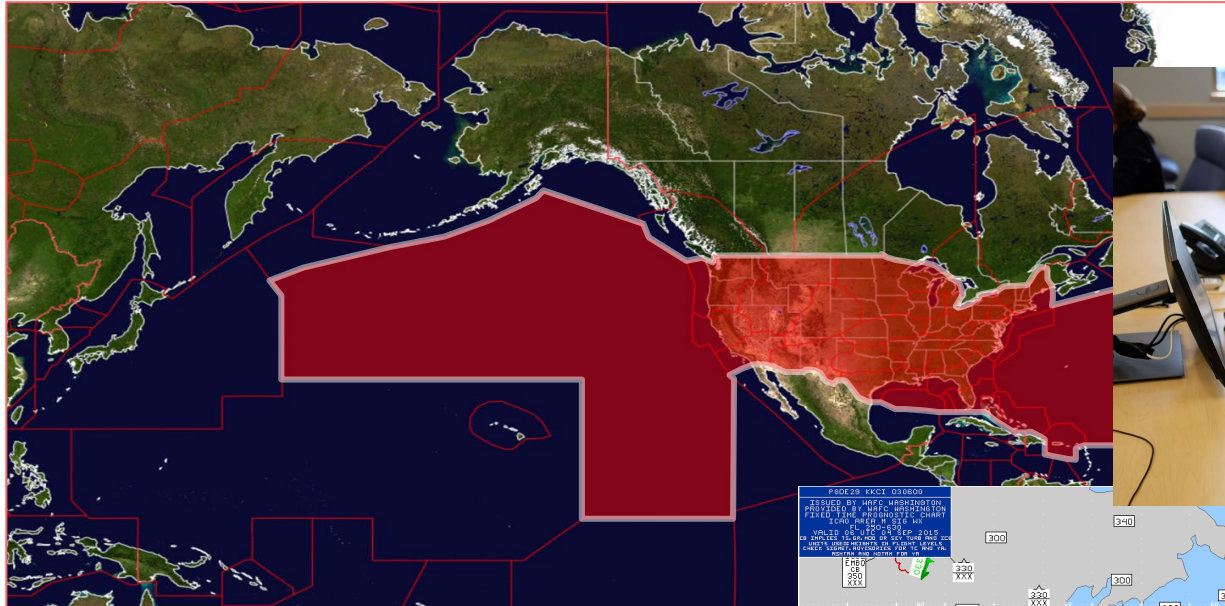


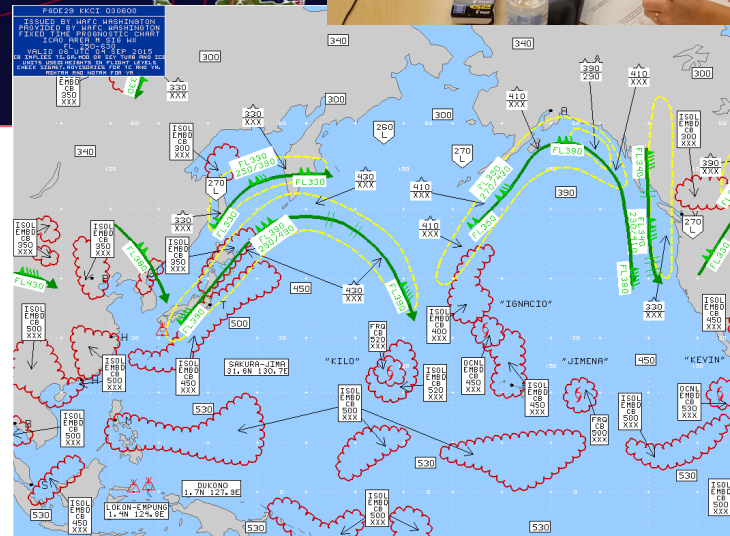
Austin Cross, Aviation Meteorologist

Aviation Weather Center



R20 Testbed

Domestic and international aviation forecasts and warnings



AVIATION WEATHER CENTER
NOAA NATIONAL WEATHER SERVICE

Local Forecast | HOME | ADVISORIES | FORECASTS | OBSERVATIONS | TOOLS | NEWS | SEARCH | ABOUT | USER

Aviation Weather Overview

0247 UTC Wed 14 Aug 2019

Scale: 500 km | 500 mi

Fit Cat: ● MVFR ● IFR ● LIFR SIGMET CWA GAIMET
PIREP Turb: NIL LGT MOD SEV PIREP Ice: NIL LGT MOD SEV PIREP Other: X

Disclaimer: International SIGMET locations approximated. Please refer to SIGMET text for full details

AviationWeather.gov

Observations and forecast

Receive data NWS, FAA, mesonets, international, PIREPs

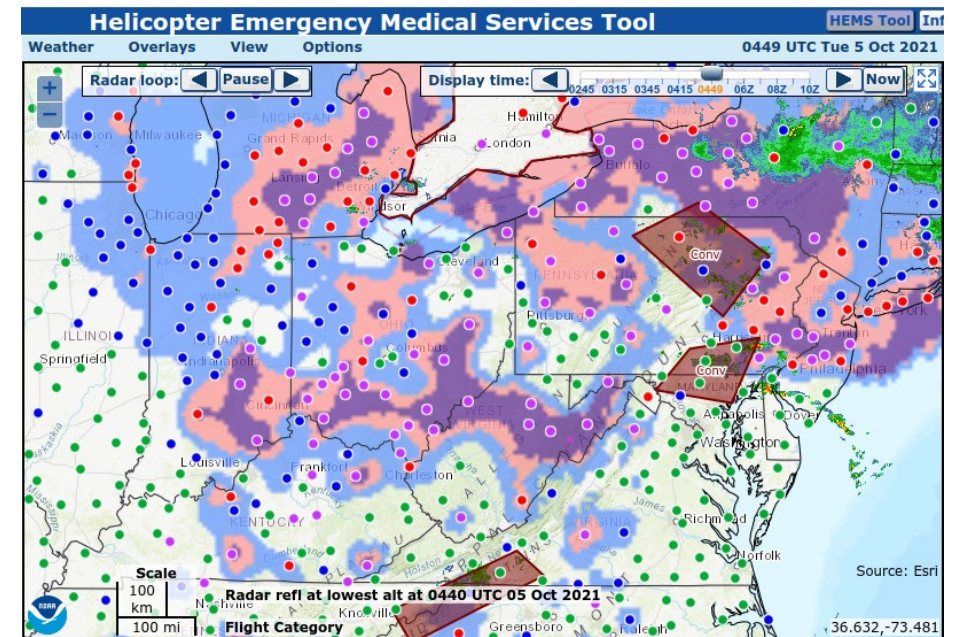
Publish warnings, advisories, forecasts

Display obs and forecast data on AviationWeather.gov

Send raw data through web, NOAAport, NGITWS

HEMS Tool

- Global composite satellite
- MRMS radar (RALA)
- LAMP ceiling and vis
- Icing from CIP and FIP
- Model temperature, relative humidity, winds
- METARs
- PIREPs
- SIGMETs
- G-AIRMETs
- CWA (center weather advisories)
- NWS Hazards (watches, warnings)
- Surface to 5,000'



AviationWeather.gov/hemst

What could be improved

Mobile: tablets & phones

Accessible: easy to use and navigate

Consistent: common operating picture

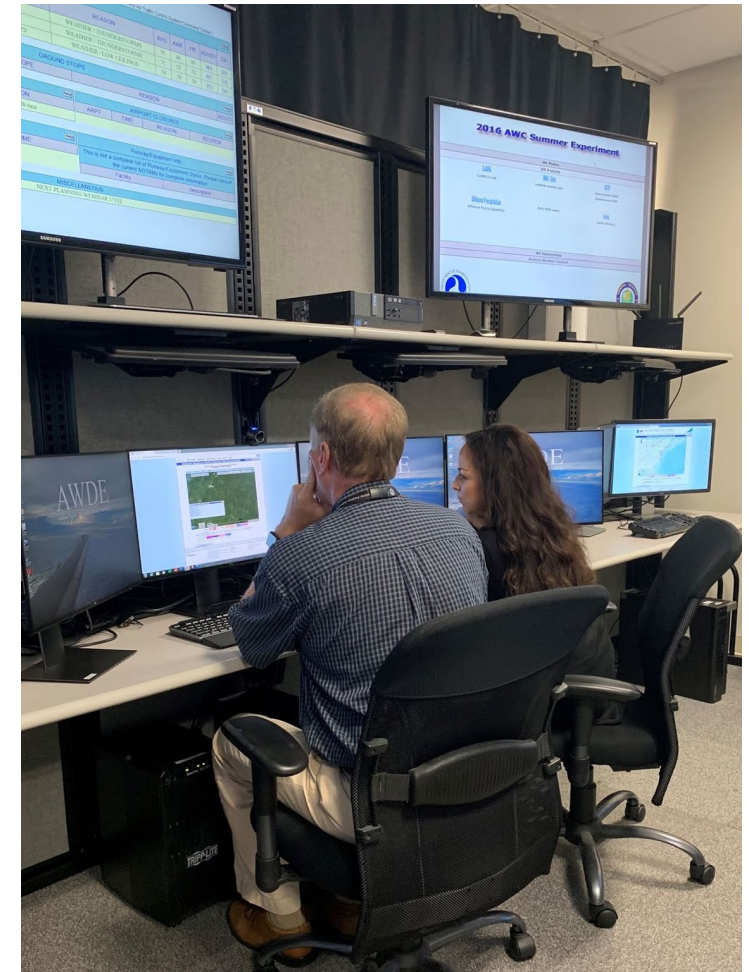
Upgraded NWP: higher resolution regional models, improved post-processing

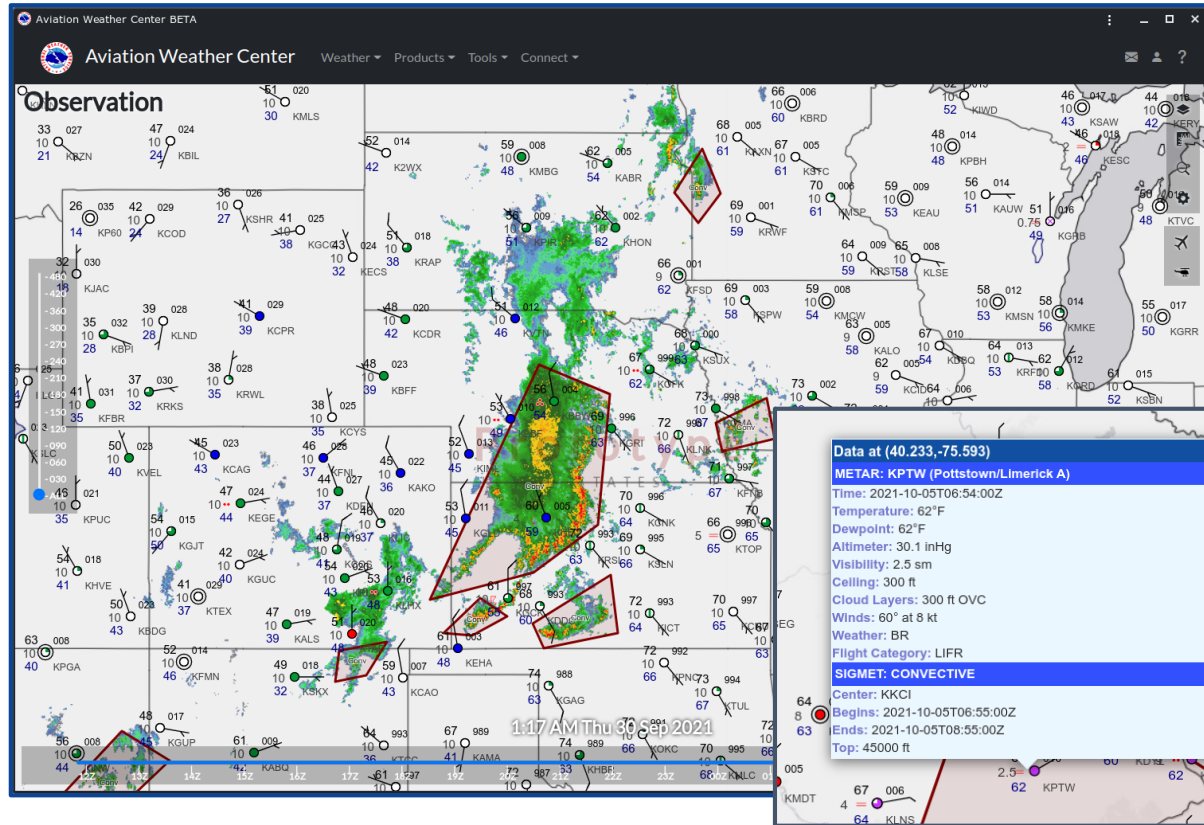


September 2021 Apple iPad promotion

Aviation Weather Testbed

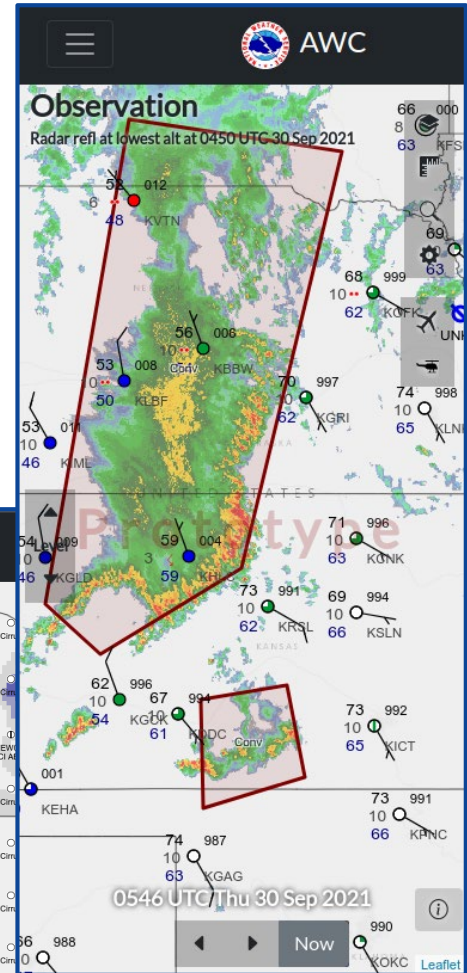
- Research-to-operations
- Closing the loop with end-user, stakeholder feedback
- Collaboration with FAA Aviation Weather Demonstration and Evaluation services





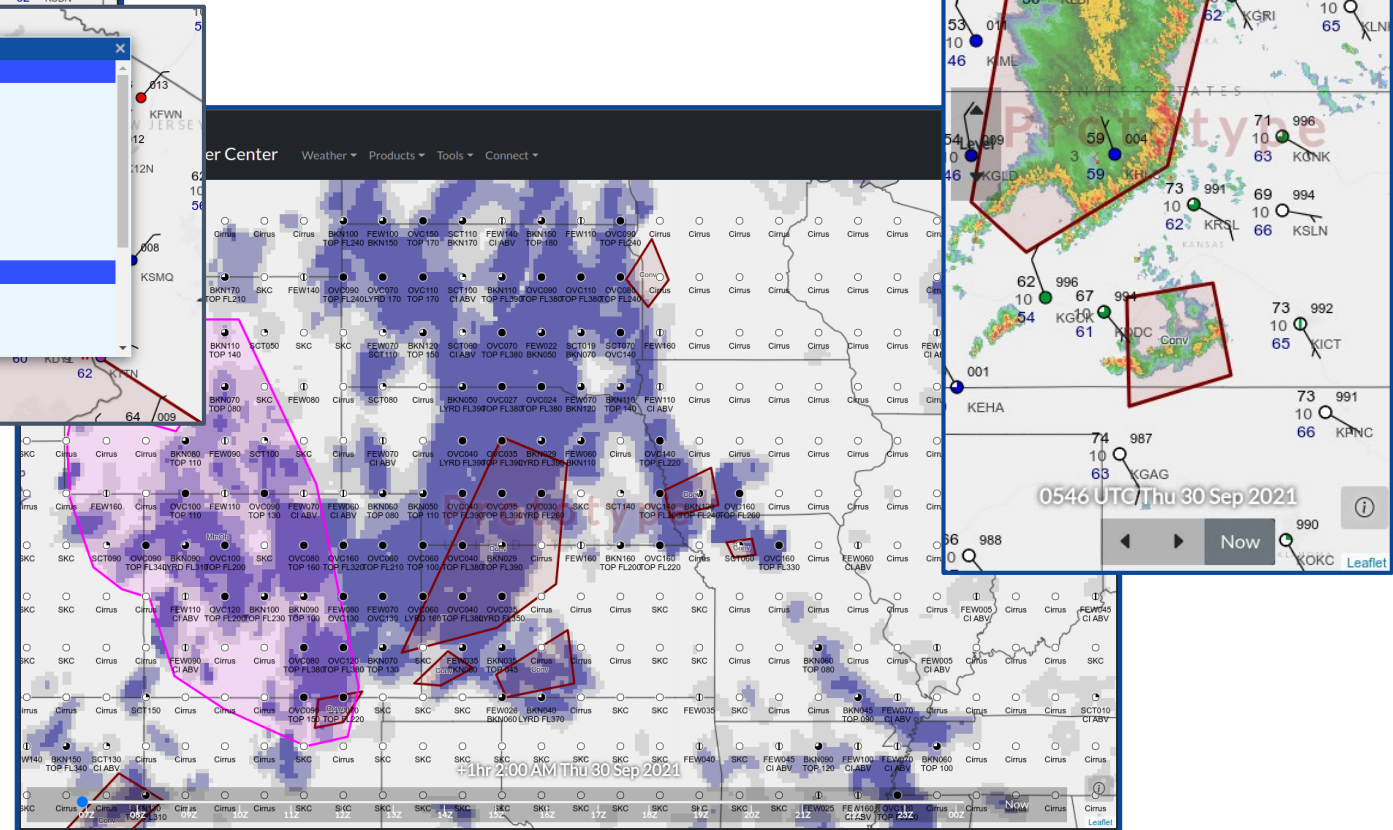
GFA Low Altitude

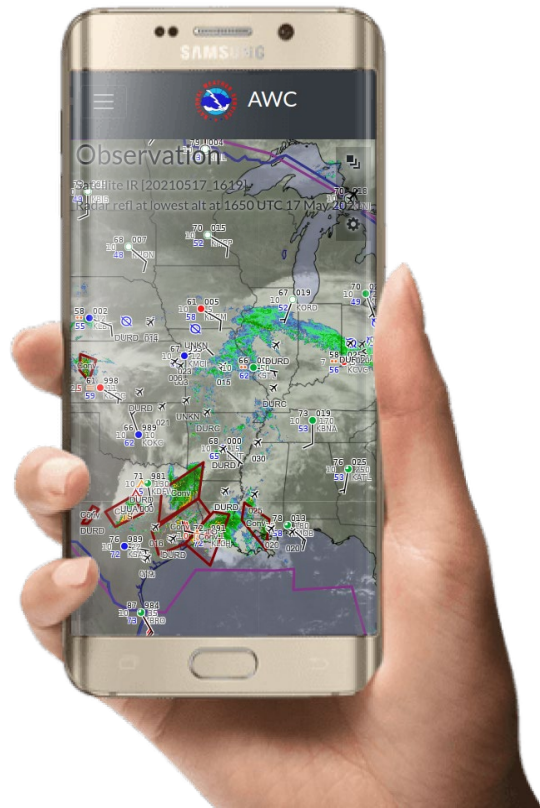
Combining GFA with HEMS in one display



Prototype screenshots

May not reflect final design





austin.cross@noaa.gov

<https://AviationWeather.gov/contact>