

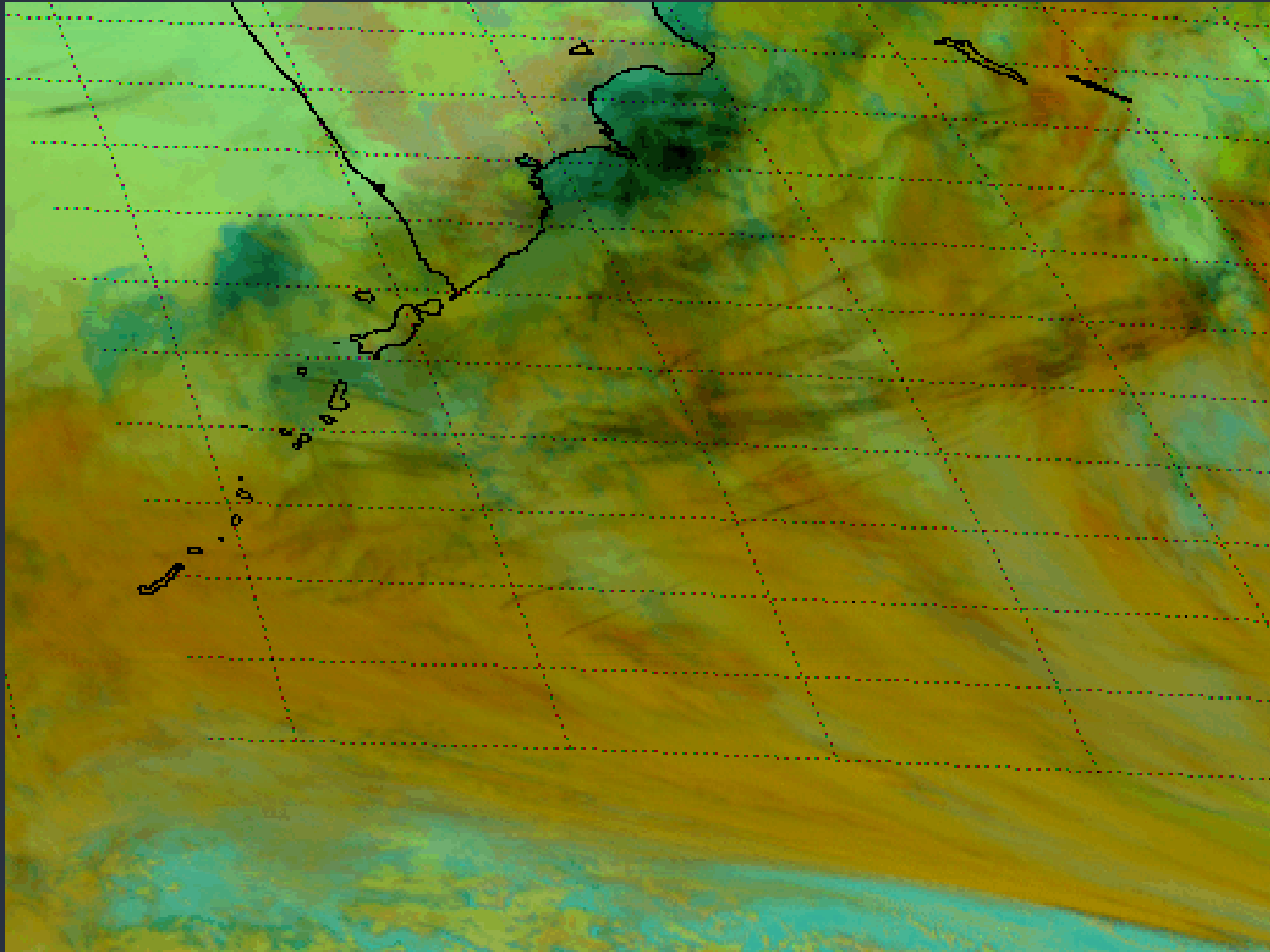
# Satellite Applications to Aviation Weather

Dan Lindsey  
NOAA/NESDIS GOES-R Program Scientist

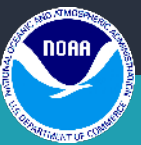
Contributions from Tony Wimmers (CIMSS) and Yoo-Jeong Noh (CIRA)

**NOAA**  
National Environmental Satellite,  
Data, and Information Service

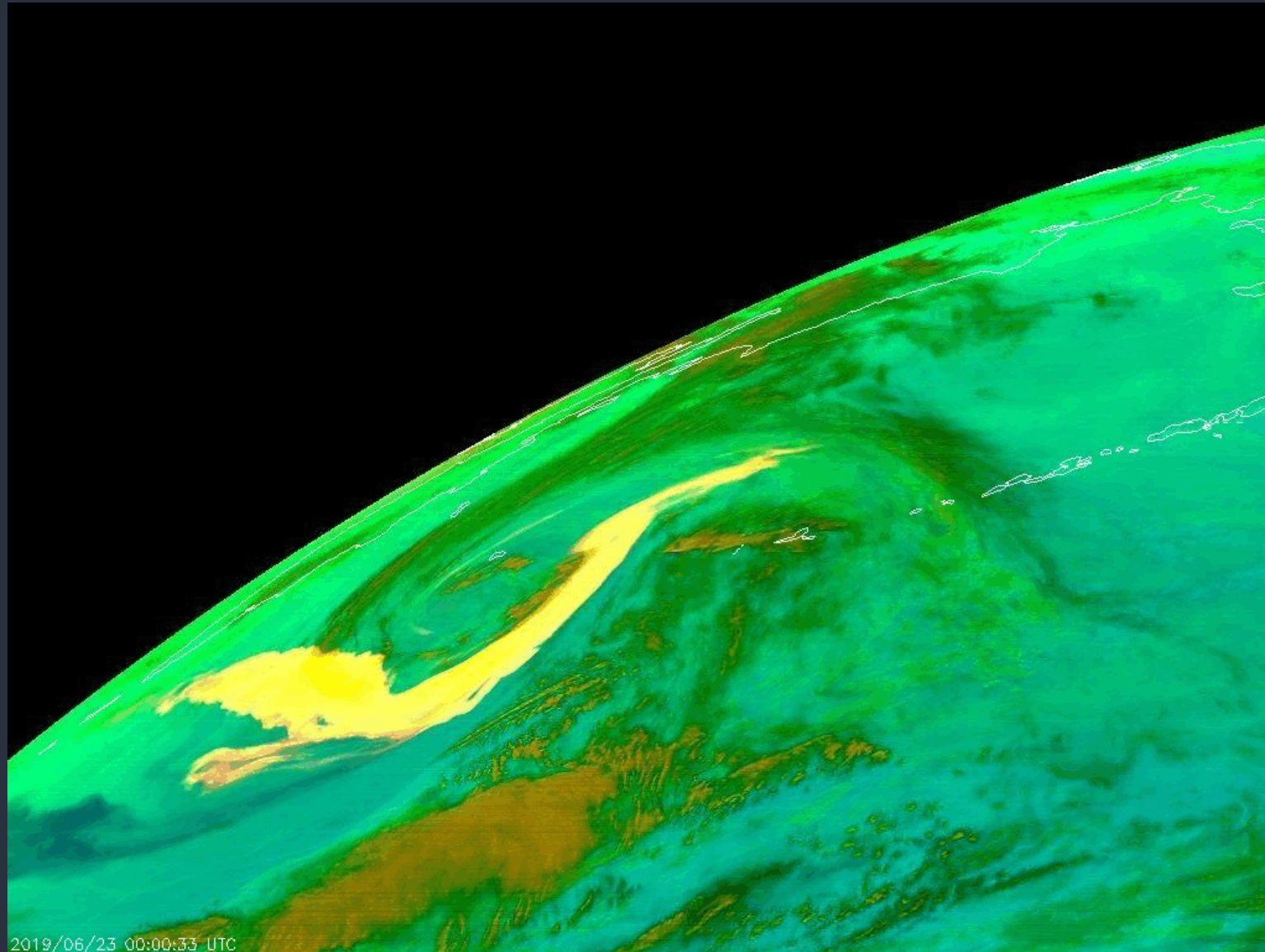
# Eruption of Kambalny – March 2017 – Kamchatka – Himawari-8



# Eruption of Raikoke – June 2019 – NW Pacific – Himawari-8



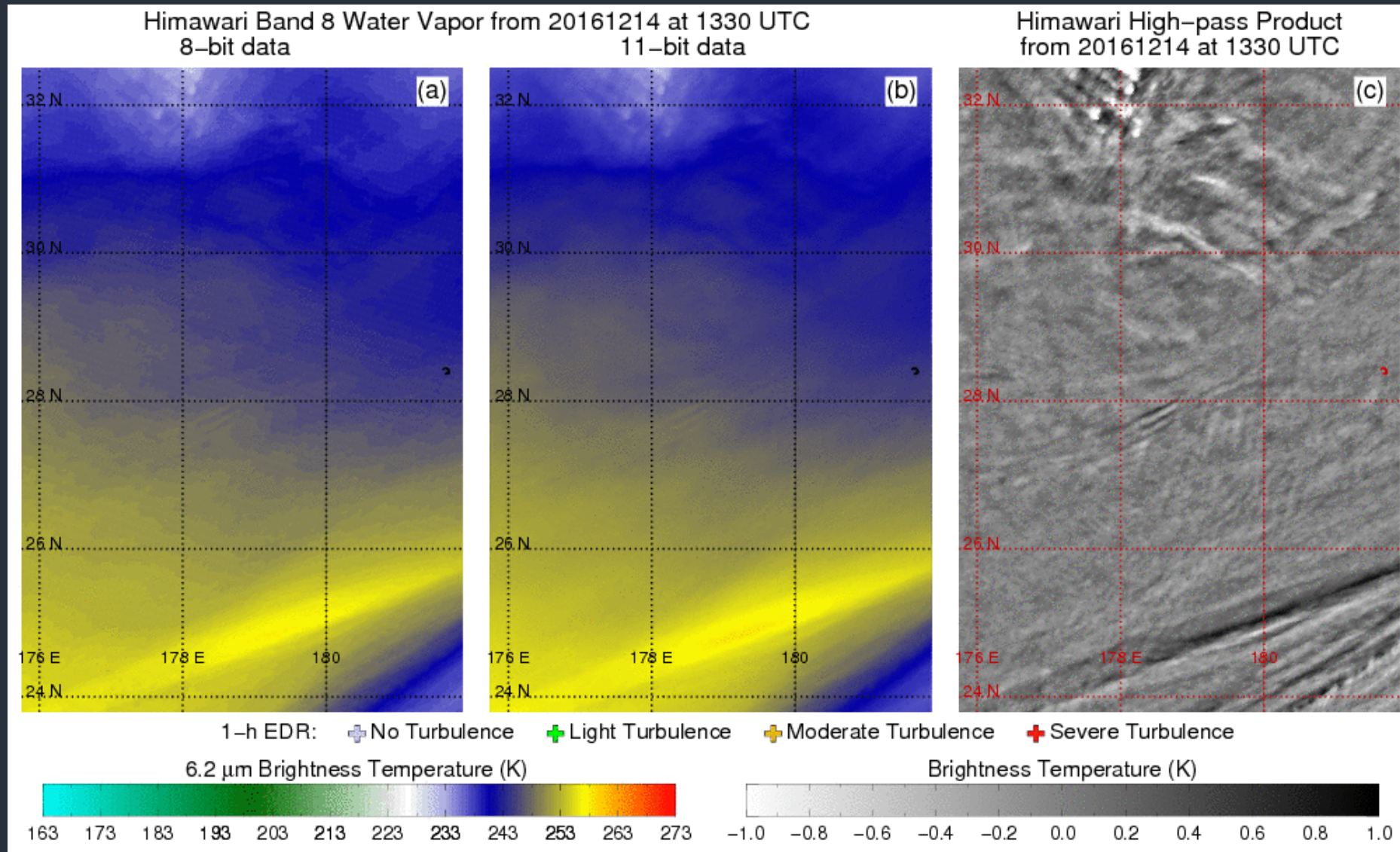
# Raikoke Plume over the Aleutians – June 2019 - GOES-17 SO2 RGB



2019/06/23 00:00:33 UTC

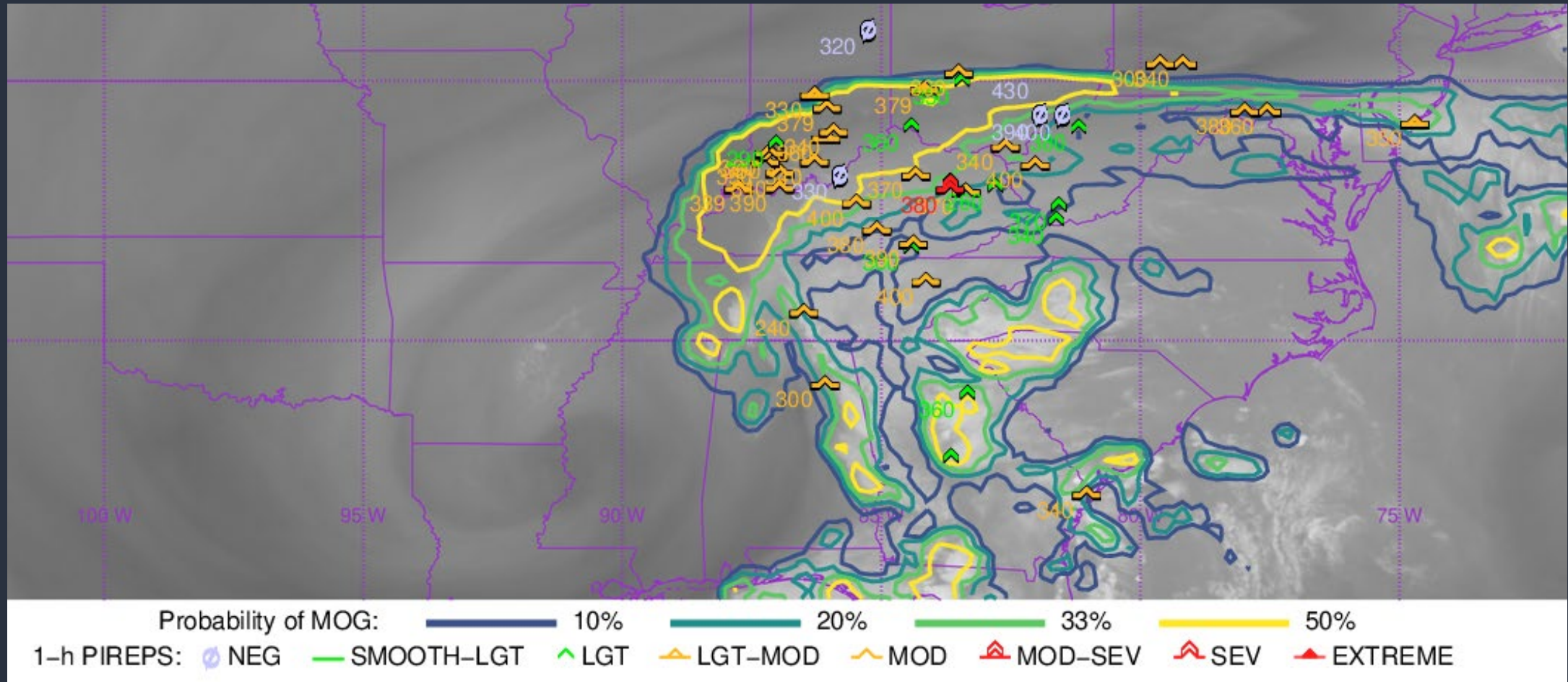


# Automated turbulence detection – Tony Wimmers (CIMSS)



# Automated turbulence detection – Tony Wimmers (CIMSS)

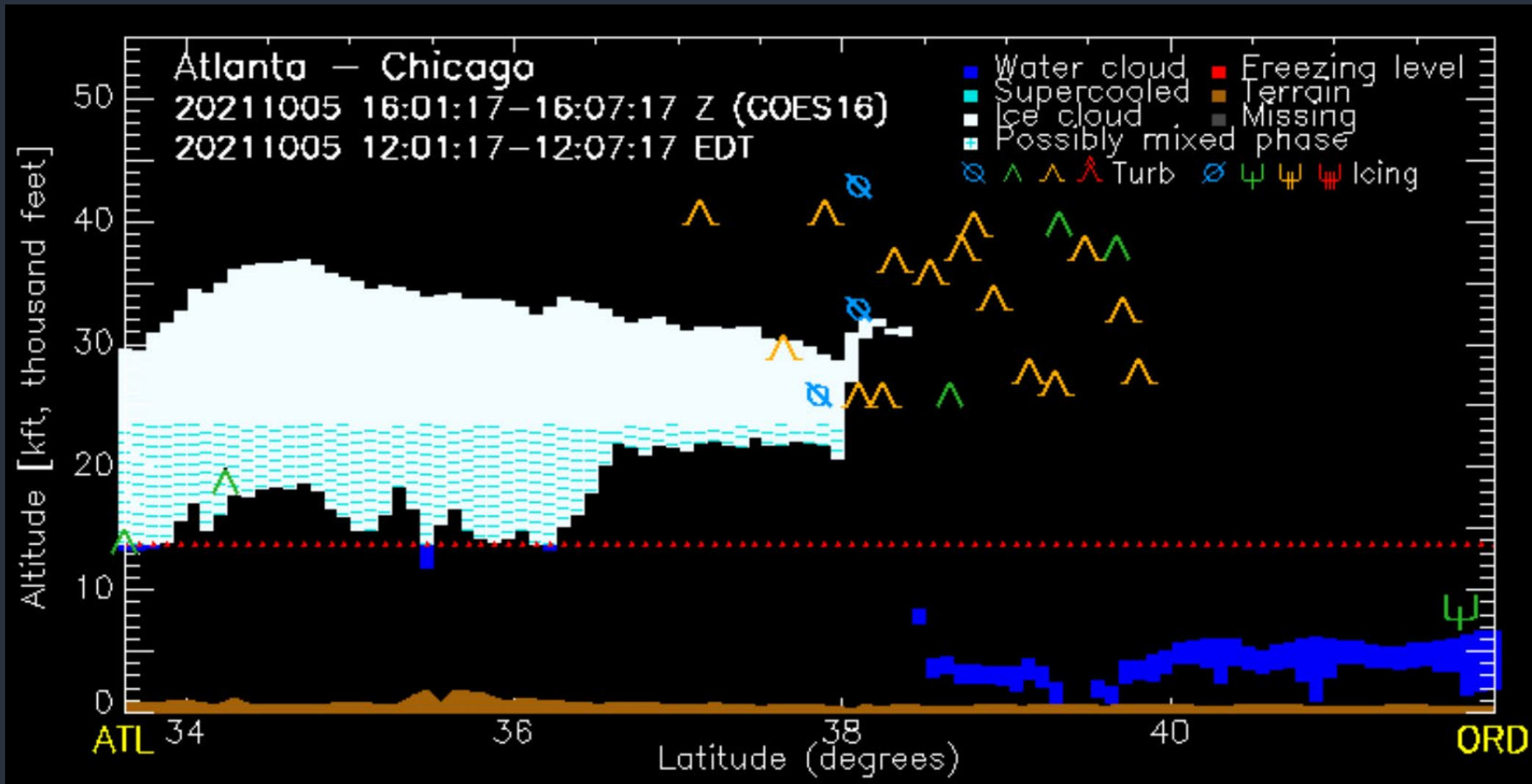
GOES-16 MOG Probability from 36–37 kft: Imagery from 20211005 at 1430 UTC



<https://cimss.ssec.wisc.edu/turbulence/>



# Cloud Vertical Cross Sections – Yoo-Jeong Noh (CIRA)



[https://rammb.cira.colostate.edu/ramsd/online/npp\\_viirs\\_conus\\_aviation.asp](https://rammb.cira.colostate.edu/ramsd/online/npp_viirs_conus_aviation.asp)



# Resources on the Web

- GOES-16/17 ABI imagery and products: <https://rammb-slider.cira.colostate.edu/>
- Another imagery viewer that may load more quickly: <https://www.star.nesdis.noaa.gov/goes/index.php>
- VOLCAT (Volcano Monitoring) from CIMSS: <https://volcano.ssec.wisc.edu/>
- CIMSS Automated Turbulence detection page: <https://cimss.ssec.wisc.edu/turbulence/>
- CIRA Cloud Vertical Cross Section page: [https://rammb.cira.colostate.edu/ramsdis/online/npp\\_viirs\\_conus\\_aviation.asp](https://rammb.cira.colostate.edu/ramsdis/online/npp_viirs_conus_aviation.asp)

Any feedback (positive or negative) on these products is very much appreciated!

Dan.Lindsey@noaa.gov

