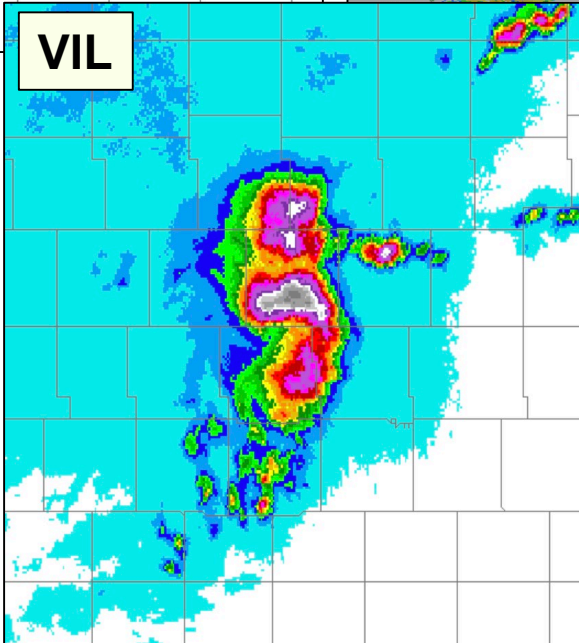
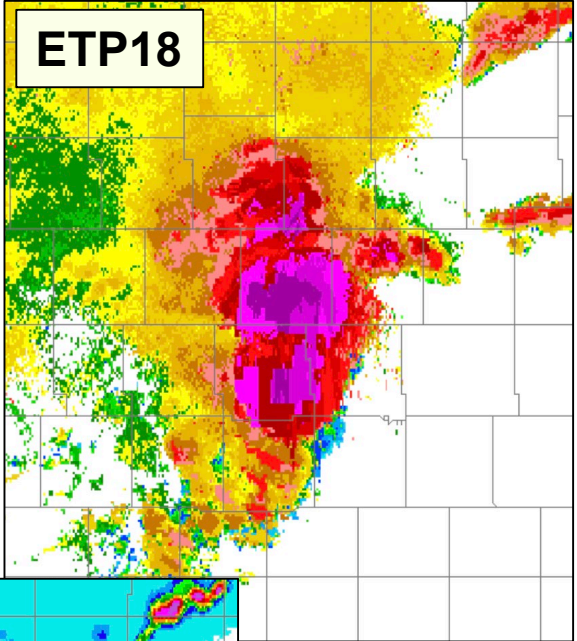
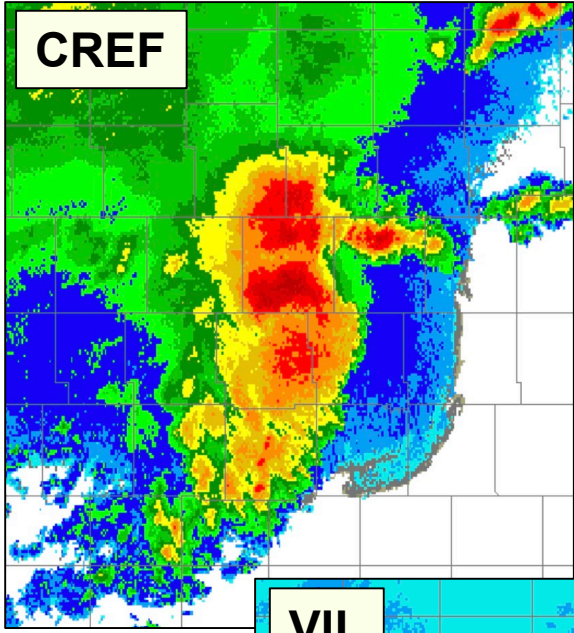
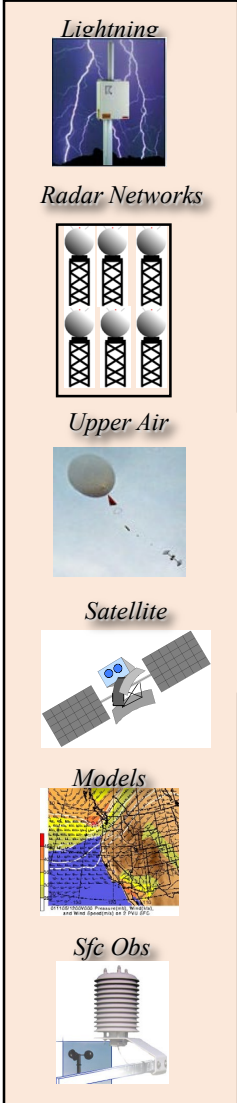
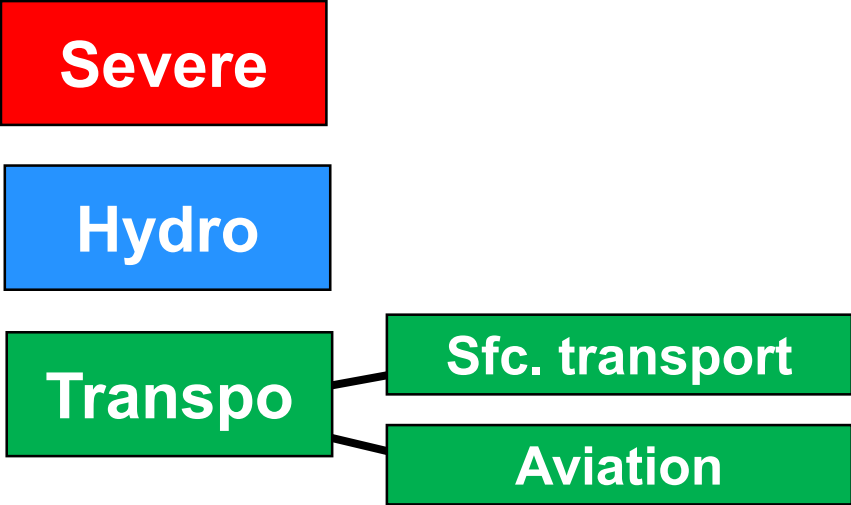


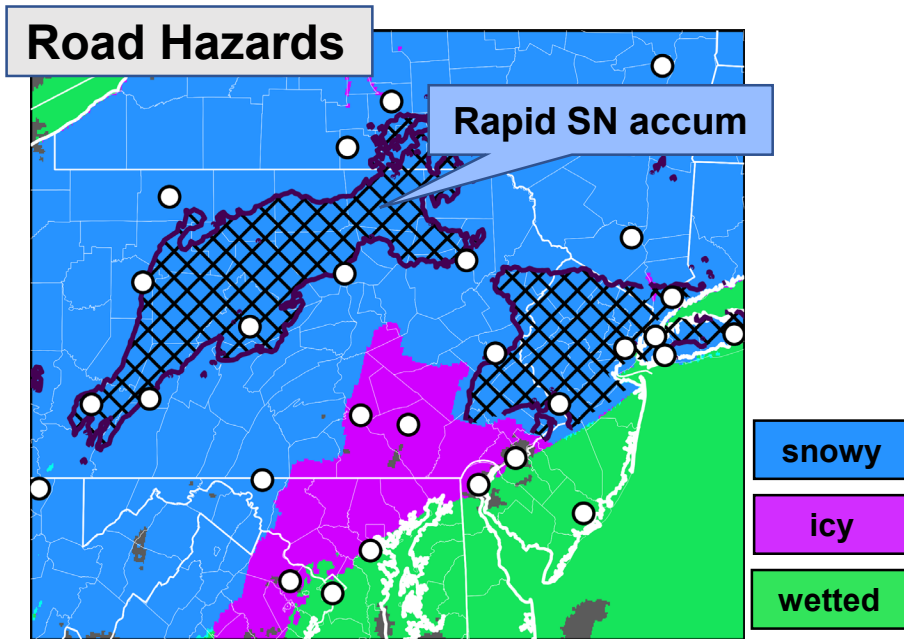
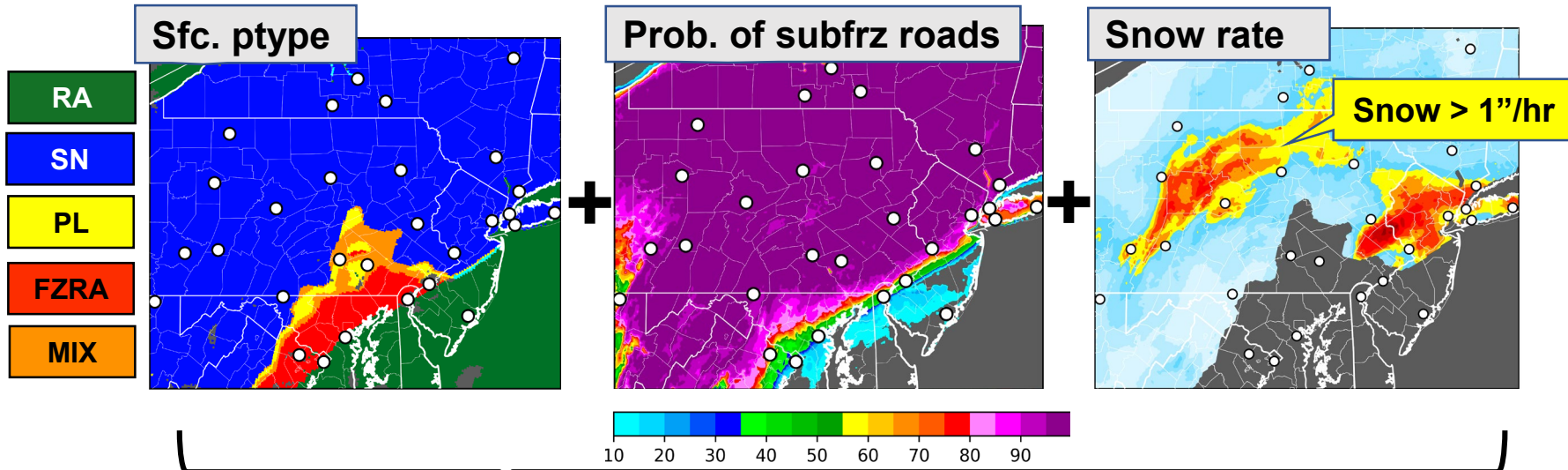
# MRMS: Multi-Radar/Multi-Sensor – An overview for the FAA

## What is it?

- A software system that integrates radar, satellite, lightning, upper-air, model, and surface observations to generate over 100 products and derivatives



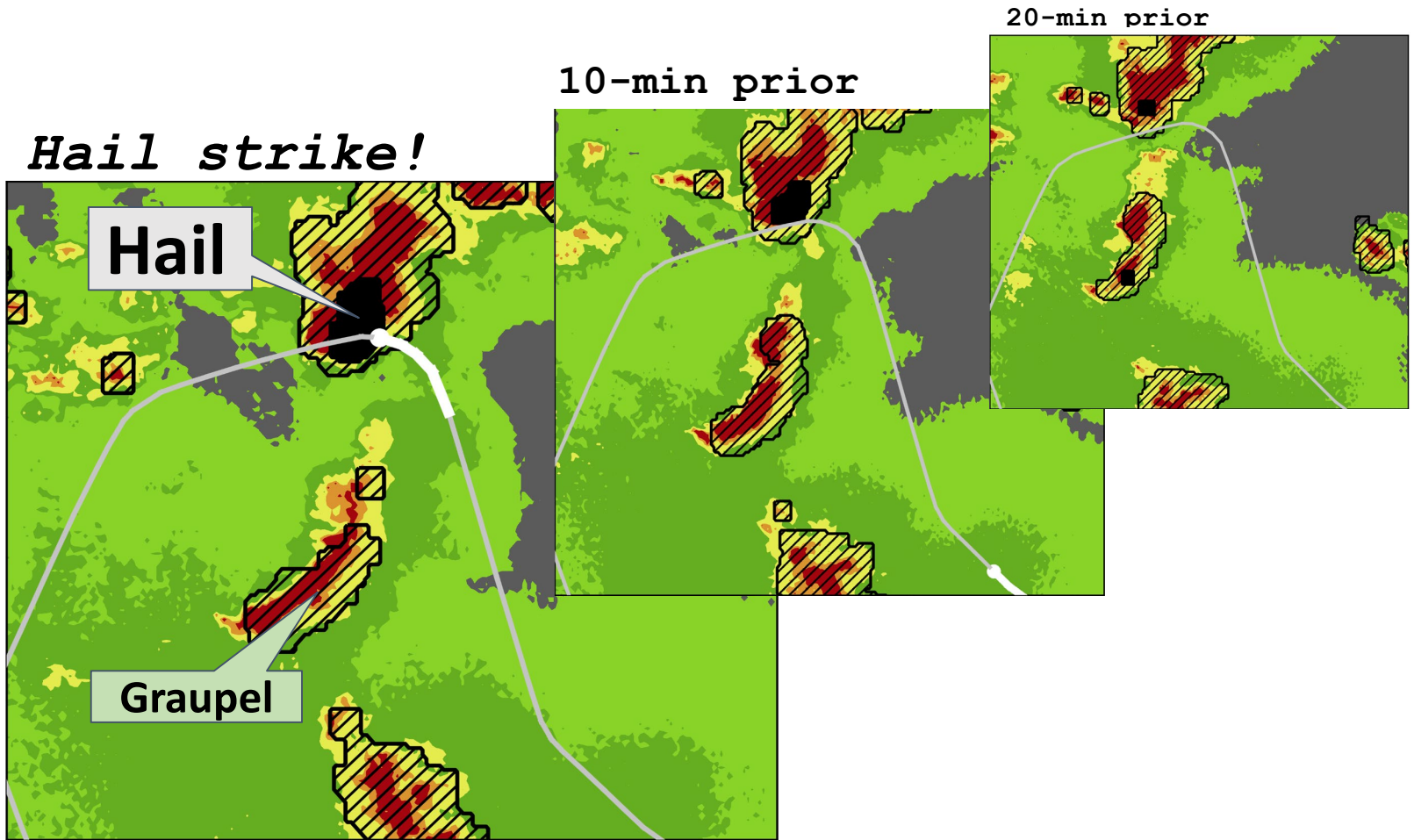
# Aviation/Road Weather Mash-up



# Aviation/Hydrometeorology Mash-Up

**Hail smashes nose of plane that flew into towering storm**

-Washington Post, 5 June 2018

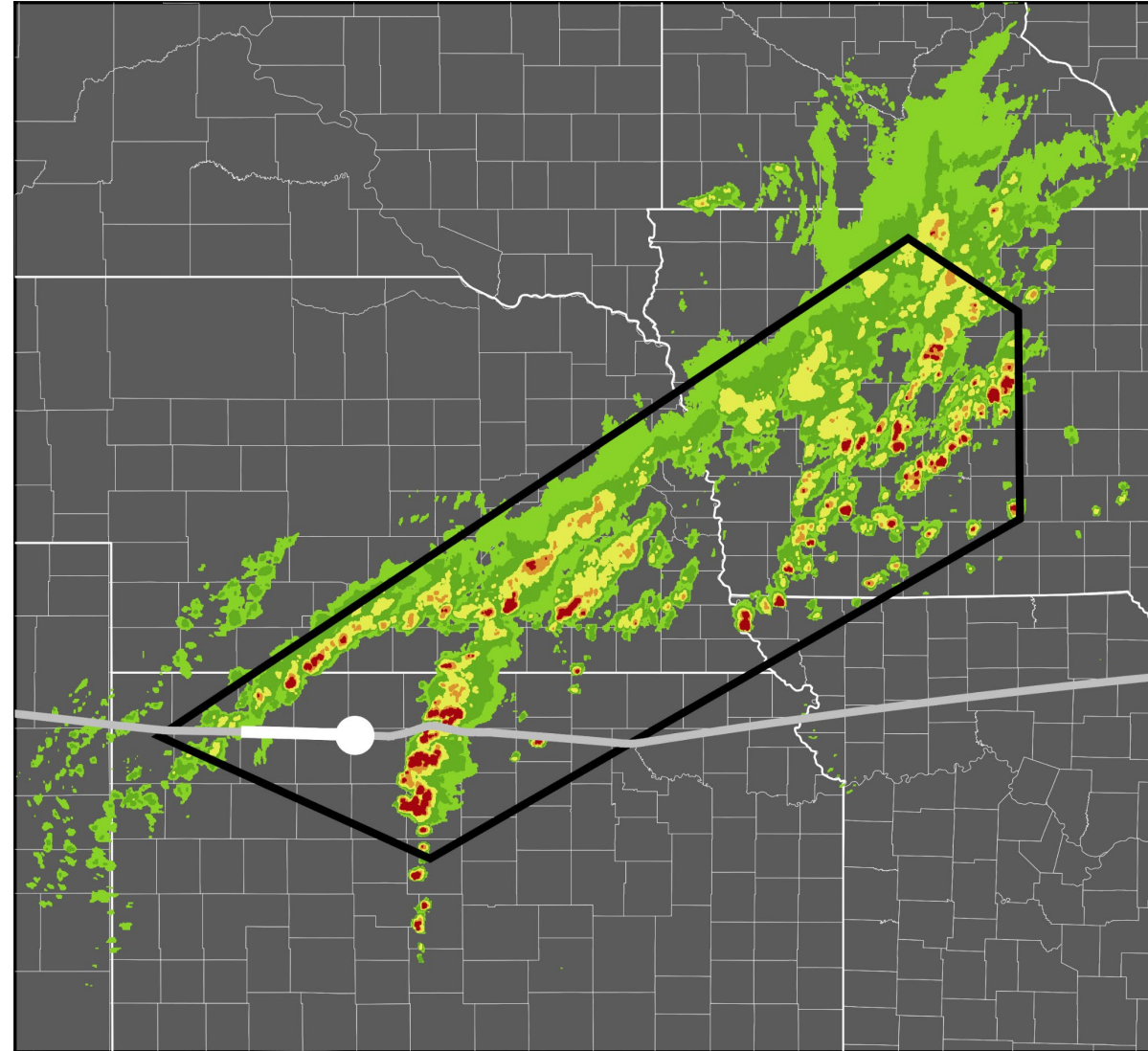


# Aviation/Severe Weather Mash-Up

CONVECTIVE SIGMET 71E  
VALID UNTIL 2255Z  
FL GA AND CSTL WTRS  
FROM 50SSW SAV-20NE CRG-30SW CRG-50SSW SAV  
AREA SEV TS MOV FROM 26035KT. TOPS TO FL320.  
TORNADOES POSS.

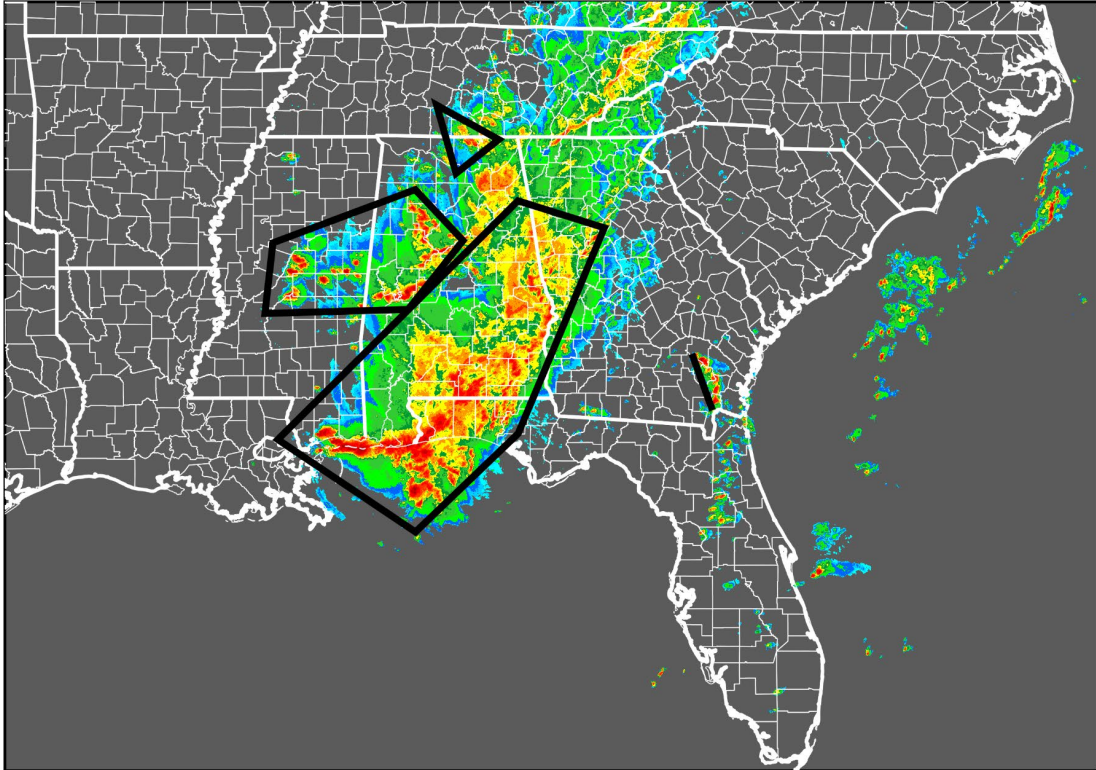


**When C-SIGs  
turn 50, is this  
what we  
hope they will  
look like?**

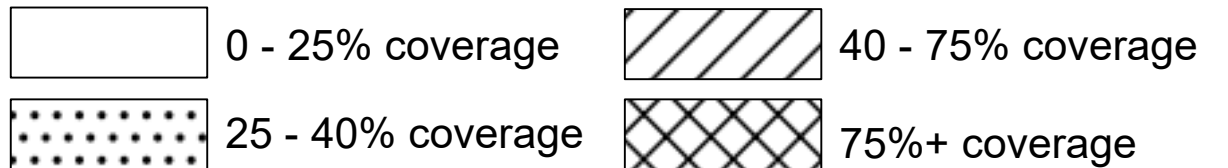
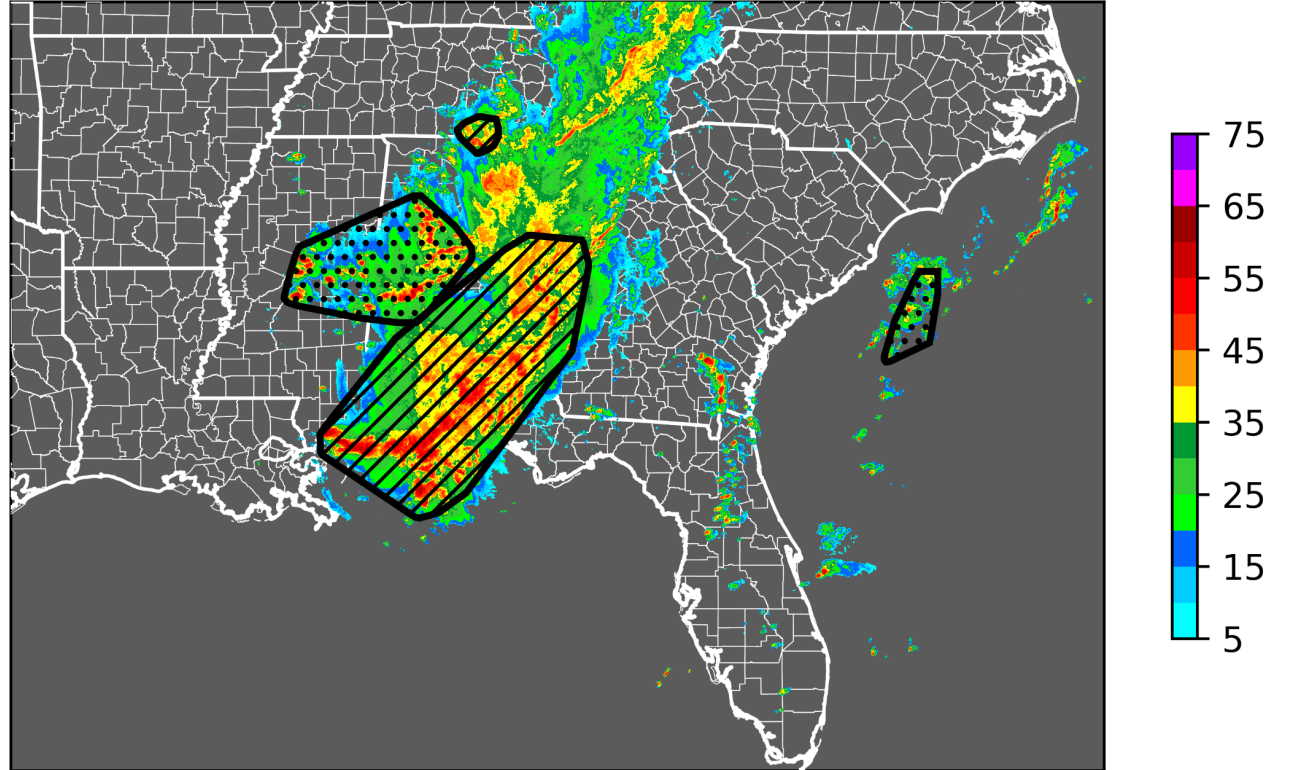


# Aviation/Severe Weather Mash-Up

Manually-generated C-SIGs from AWC

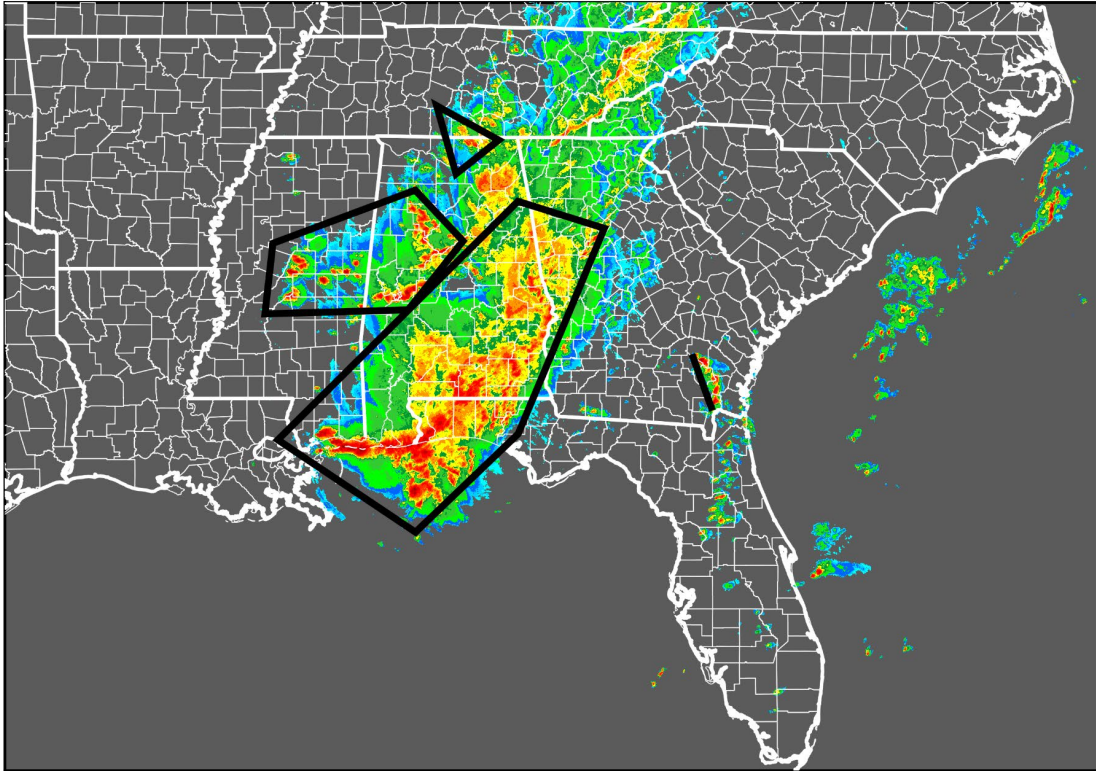


Automated, **graded** C-SIGs – total column



# Aviation/Severe Weather Mash-Up

Manually-generated C-SIGs from AWC



Automated, graded C-SIGs – 25 to 30 kft

